

List of pages in this Trip Kit

Trip Kit Index

Airport Information For MPEJ

Terminal Charts For MPEJ

Revision Letter For Cycle 14-2020

Change Notices

Notebook

General Information

Location: COLON PAN
ICAO/IATA: MPEJ / ONX
Lat/Long: N09° 21.6', W079° 52.0'
Elevation: 28 ft

Airport Use: Public
Daylight Savings: Not Observed
UTC Conversion: +5:00 = UTC
Magnetic Variation: 4.5° W

Customs: No
Airport Type: IFR
Landing Fee: No
Control Tower: Yes
Jet Start Unit: No
LLWS Alert: No
Beacon: Yes

Sunrise: 1136 Z
Sunset: 2311 Z

Runway Information

Runway: 18
Length x Width: 8858 ft x 148 ft
Surface Type: asphalt
TDZ-Elev: 26 ft

Runway: 36
Length x Width: 8858 ft x 148 ft
Surface Type: asphalt
TDZ-Elev: 28 ft

Communication Information

ATIS: 127.800
Jimenez Tower: 118.500
Jimenez Ground: 121.700
Panama Approach: 119.700
Panama Approach: 119.200 Secondary
Panama Approach: 121.200
Panama Approach: 123.300 Secondary

MPEJ/ONX
ENRIQUE A JIMENEZ

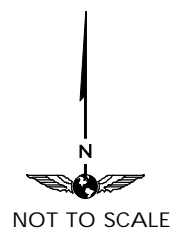
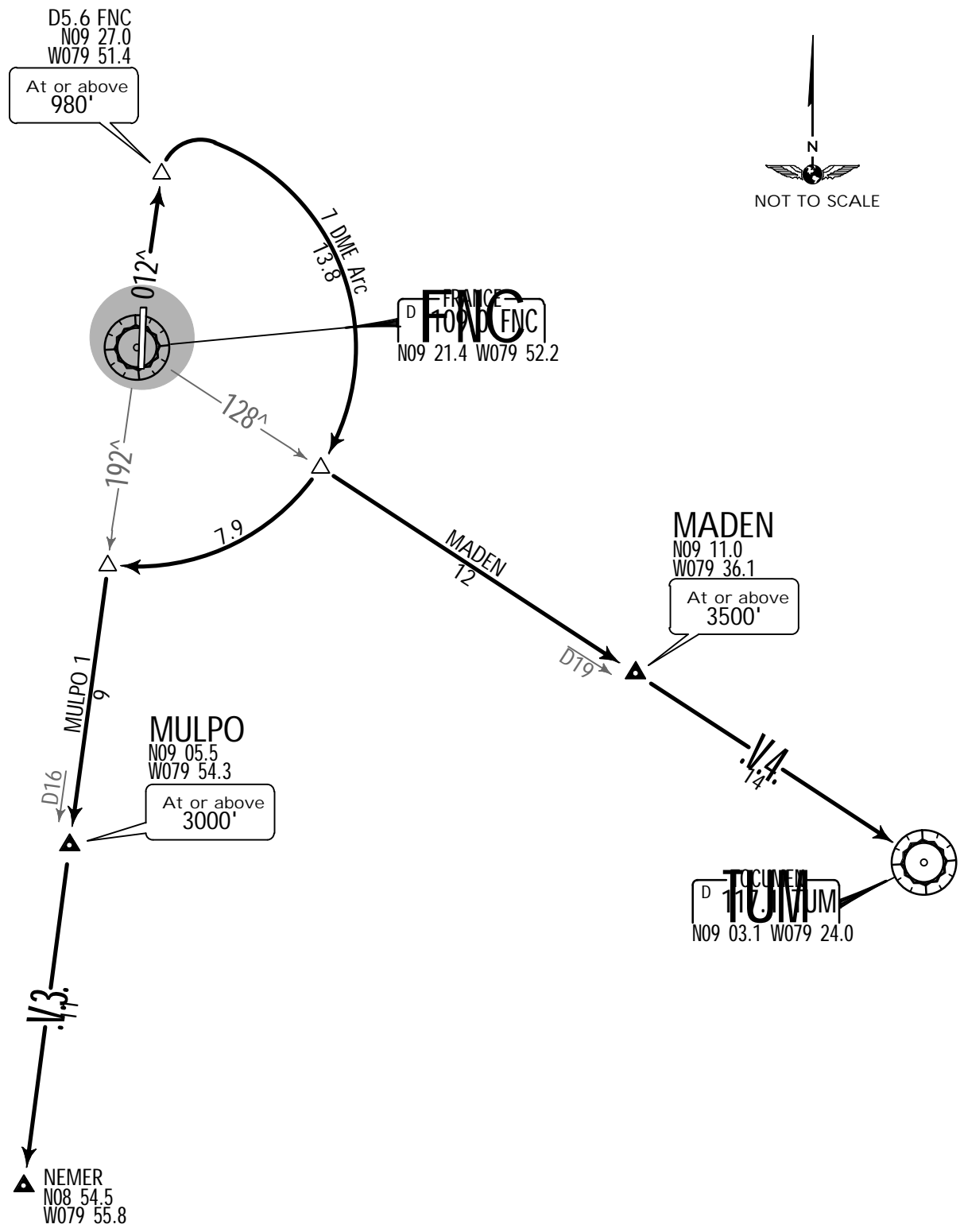


10-3 28 AUG 15

COLON, PANAMA
.SID.

Apt Elev 28'	Trans level: FL190	Trans alt: 18000'
-----------------	--------------------	-------------------

MADEN [MADEN], MULPO 1 [MULPO1] DEPARTURES (RWY 36)



These SIDs require take-off minimums:
2 Engines: Ceiling 600', Visibility 1600m.

INITIAL CLIMB

Climb on runway heading, intercept FNC R-012 to D5.6 FNC at or above 980', then turn RIGHT to intercept FNC 7 DME Arc climbing to depicted route and continue according to ATC clearance.

MPEJ/ONX

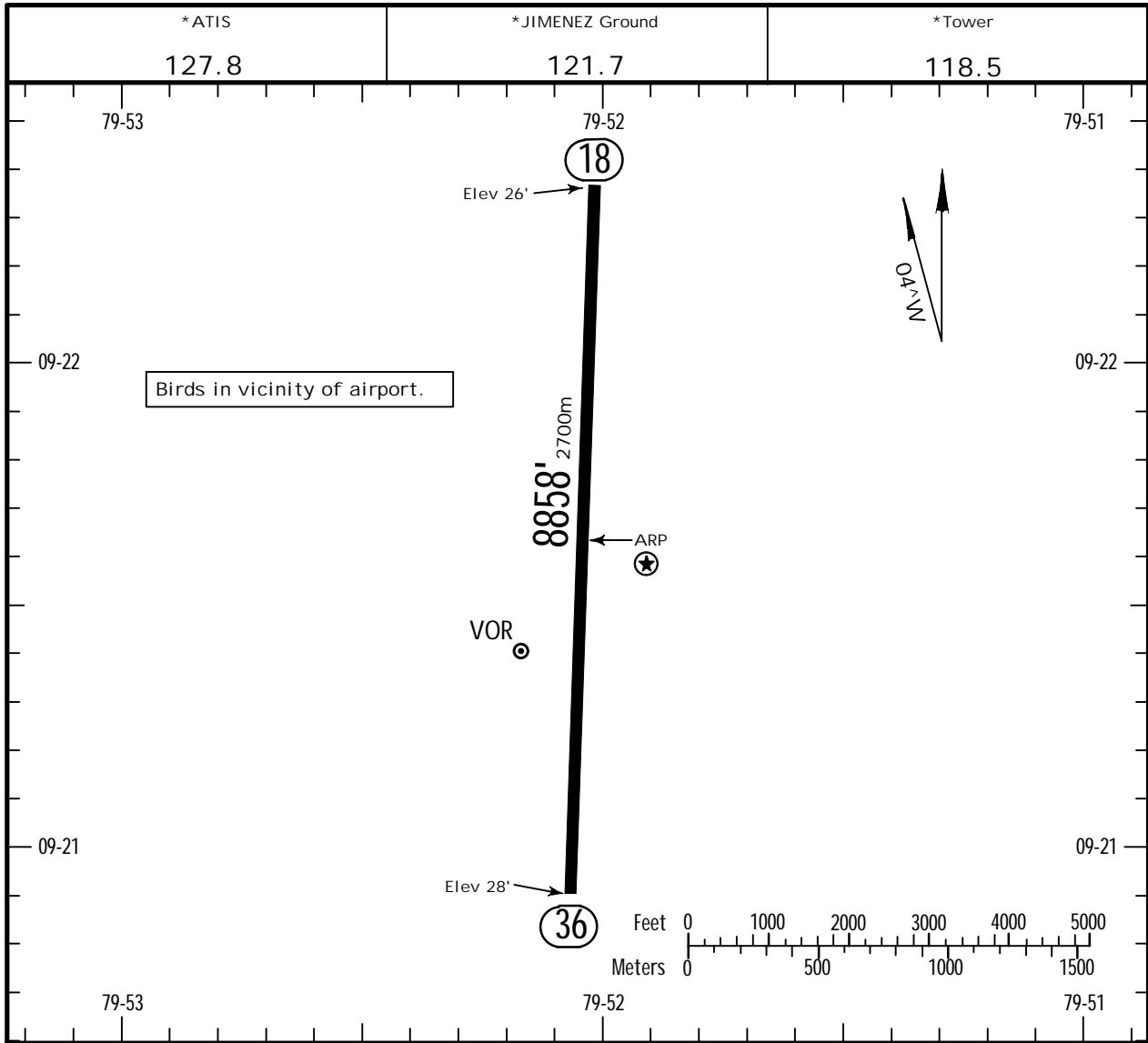


COLON, PANAMA

Apt Elev 28'
N09 21.6 W079 52.0

13 MAR 15 (10-9)

ENRIQUE A JIMENEZ



ADDITIONAL RUNWAY INFORMATION

RWY	USABLE LENGTHS	LANDING BEYOND	TAKE-OFF	WIDTH
18 36 RL				148' 45m

TAKE-OFF

1	Rwy 36
2 Eng	600' -1600m

1 Departure climb rate V/V (FPM) to assigned altitude

GROUND SPEED-KTS	60	120	180	240	300
200' /NM	200	400	600	800	1000

MPEJ/ONX



COLON, PANAMA

ENRIQUE A JIMENEZ

27 JUL 18

(12-1)

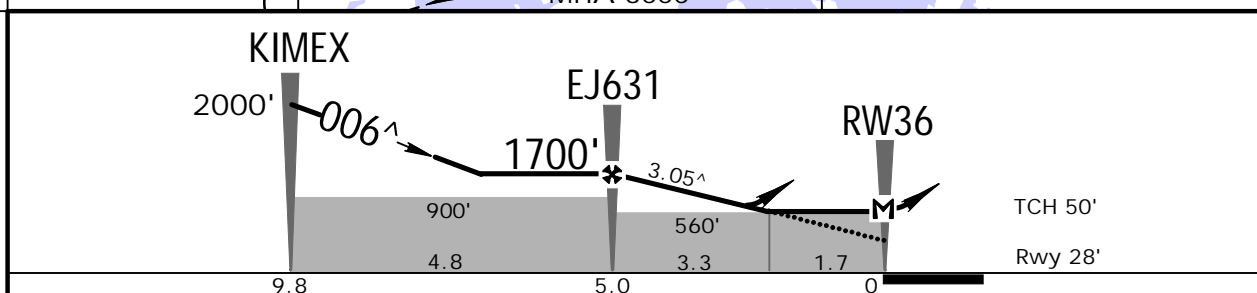
CAT A, B & C

RNAV (GNSS) Rwy 36

BRIEFING STRIP™

*ATIS 127.8		PANAMA Approach 119.7 121.2		*JIMENEZ Tower 118.5		*Ground 121.7	
RNAV	Final Apch Crs 006 [^]	Minimum Alt EJ631 1700' (1672')	LNAV MDA(H) 560' (532')	Apt Elev 28'	Rwy 28'	4300	
MISSED APCH: Climb to 1500', then climbing LEFT turn to 3000' direct to EGDON and hold. Do not turn before missed approach point.							
Alt Set: hPa		Rwy Elev: 1 hPa		Trans level: FL190		Trans alt: 18000'	
1. GNSS required. 2. For uncompensated BARO-VNAV systems, procedure not authorized below 25°C (77°F) or above 49°C (120°F).							
							MSA RW36

RECOMMENDED ALTITUDES	
DIST to RW 36	ALTITUDE
EJ631	1700'
4.0	1370'
3.0	1050'
2.0	730'
1.7	560'



Gnd speed-Kts	60	90	120	150	180	1500'	3000'	EGDON
Descent Angle	3.05 [^]	320	500	660	820			
MAP at RW36						↑	← LT	→

STRAIGHT-IN LANDING RWY 36		CIRCLE-TO-LAND	
LNAV/VNAV	LNAV	NA	
DA(H) 580' (552')	MDA(H) 560' (532')		
A	1600m		NA
B			
C	2600m	2500m	
D	NOT APPLICABLE		

MPEJ/ONX



COLON, PANAMA

ENRIQUE A JIMENEZ

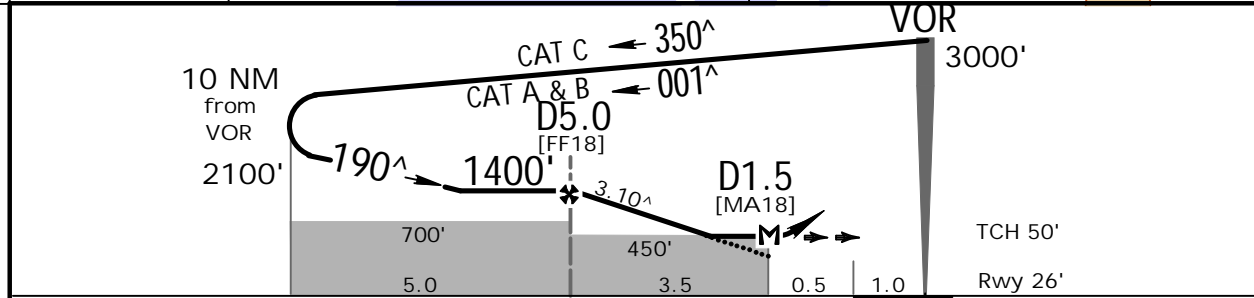
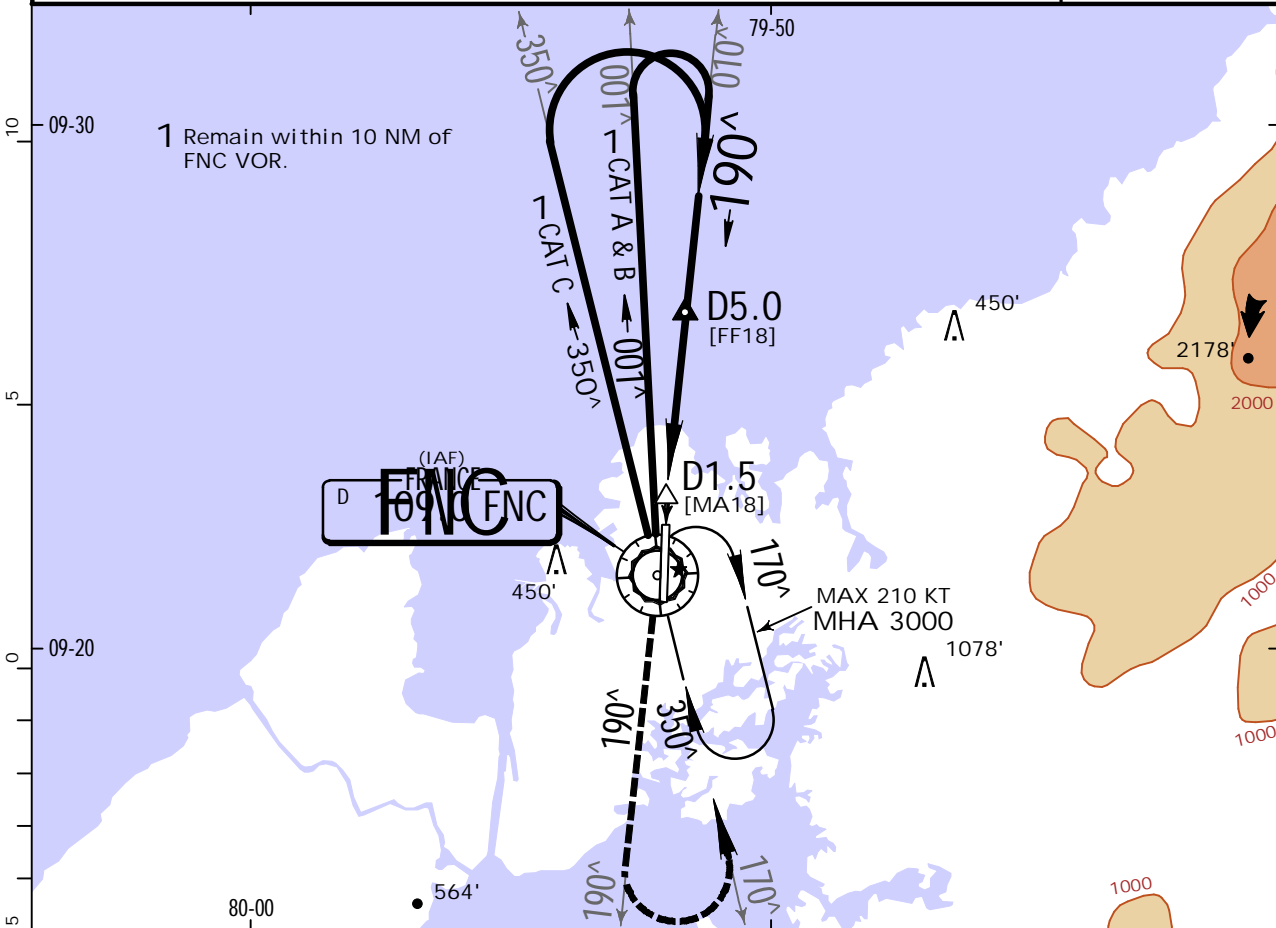
27 JUL 18

13-1

CAT A, B & C

VOR DME Rwy 18

*ATIS 127.8		PANAMA Approach 119.7 121.2		*JIMENEZ Tower 118.5		*Ground 121.7		
VOR FNC 109.0	Final Apch Crs 190 [^]	Minimum Alt D5.0 1400' (1374')	MDA(H) 450' (424')	Apt Elev 28'	Rwy 26'	<p>MSA FNC VOR</p>		
<p>MISSED APCH: Climb to 2000' outbound via FNC VOR R-190 then turn LEFT, climbing to 3000' direct FNC VOR inbound via R-170 and hold. Do not turn before missed approach point.</p>								
<p>Alt Set: hPa Rwy Elev: 1 hPa Trans level: FL190 Trans alt: 18000'</p> <p>1. When local altimeter not available, procedure not authorized. 2. COMMUNICATIONS FAILURE: Initiate procedure in accordance with ATC instructions and published chart.</p>								



Gnd speed-Kts	60	90	120	150	180	2000'	FNC 109.0 R-190	3000'	FNC 109.0 R-170
Descent Angle	3.10 [^]	340	500	660	820				
MAP at D1.5 or									
FAF to MAP	3.5	3:30	2:20	1:45	1:24	1:10			

STRAIGHT-IN LANDING RWY 18		.CEILING REQUIRED.		CIRCLE-TO-LAND	
MDA(H) 450' (424')					
	CEILING-VISIBILITY	Max Kts	MDA(H)	CEIL-VIS	
A	500' - 1600m	90	660' (632')	700' - 1600m	
B	500' - 2100m	120	760' (732')	800' - 2400m	
C	500' - 2100m	140	860' (832')	900' - 3200m	
D	NOT APPLICABLE	D	NOT APPLICABLE		

MPEJ/ONX



COLON, PANAMA VOR Rwy 18

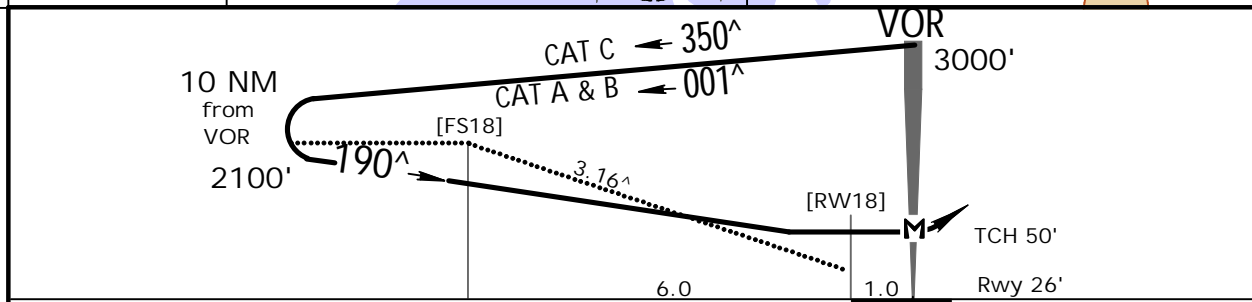
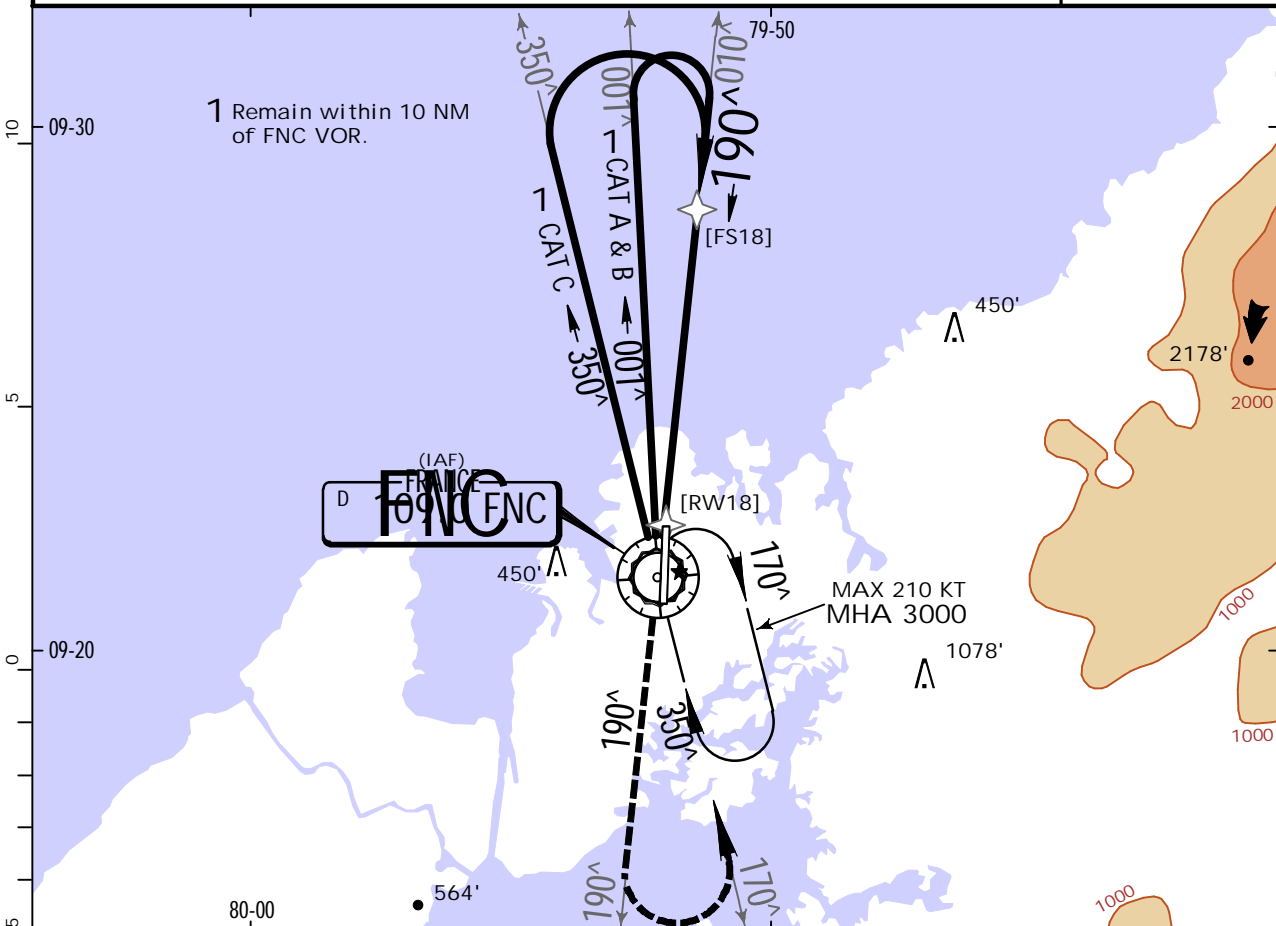
ENRIQUE A JIMENEZ

27 JUL 18

13-2

CAT A, B & C

*ATIS 127.8		PANAMA Approach 119.7 121.2		*JIMENEZ Tower 118.5		*Ground 121.7	
VOR FNC 109.0	Final Apch Crs 190 [^]	No FAF		MDA(H) 510' (484')	Apt Elev 28'	Rwy 26'	
MISSED APCH: Climb to 2000' outbound via FNC VOR R-190 then turn LEFT, climbing to 3000' direct FNC VOR inbound via R-170 and hold. Do not turn before missed approach point.							<p>MSA FNC VOR</p>
Alt Set: hPa Rwy Elev: 1 hPa Trans level: FL190 Trans alt: 18000' 1. When local altimeter not available, procedure not authorized. 2. COMMUNICATIONS FAILURE: Initiate procedure in accordance with ATC instructions and published chart.							



Gnd speed-Kts	70	90	100	120	140	160	2000' ↑	FNC 109.0	3000' ←	FNC 109.0
Descent Angle	3.16 [^]	391	503	559	671	783		↑		R-190
MAP at VOR										

STRAIGHT-IN LANDING RWY 18		.CEILING REQUIRED.		CIRCLE-TO-LAND	
MDA(H) 510' (484')					
	CEILING-VISIBILITY	Max Kts	MDA(H)	CEIL-VIS	
A	500' - 1600m	90	660' (632')	700' - 1600m	
B	500' - 2400m	120	760' (732')	800' - 2400m	
C	500' - 2400m	140	860' (832')	900' - 3200m	
D	NOT APPLICABLE	D	NOT APPLICABLE		

MPEJ/ONX



COLON, PANAMA VOR DME Rwy 36

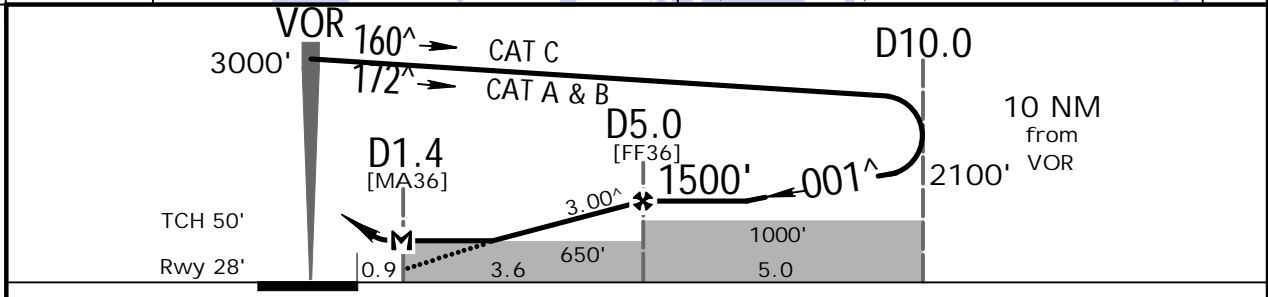
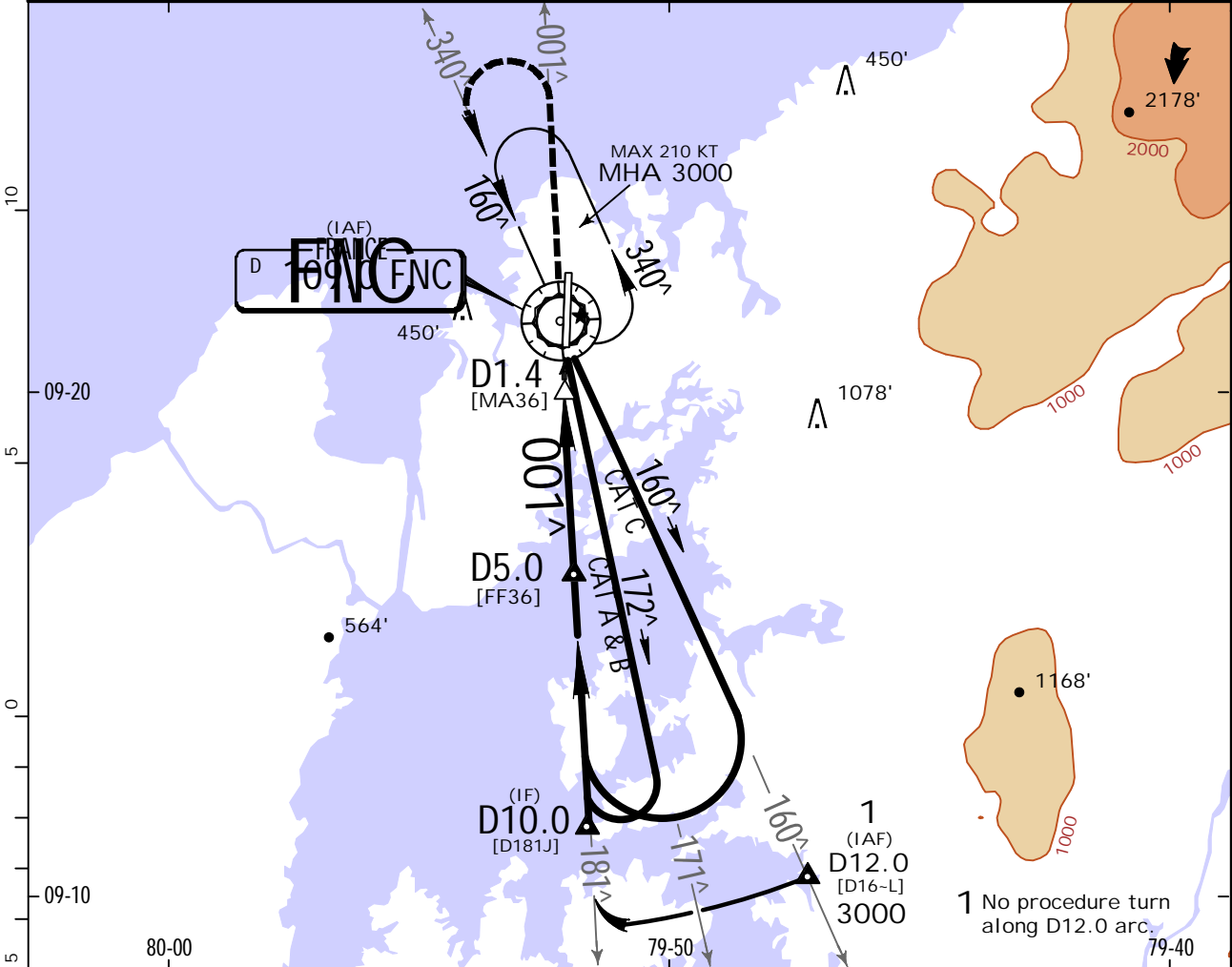
ENRIQUE A JIMENEZ

27 JUL 18

(13-3)

CAT A, B & C

*ATIS 127.8		PANAMA Approach 119.7 121.2		*JIMENEZ Tower 118.5		*Ground 121.7	
VOR FNC 109.0	Final Apch Crs 001^	Minimum Alt D5.0 1500' (1472')	MDA(H) 650' (622')	Apt Elev 28'	Rwy 28'		
MISSED APCH: Climb to 2000' outbound via FNC VOR R-001, then climbing LEFT turn to 3000' direct to FNC VOR inbound via R-340 and hold. Do not turn before missed approach point.							
Alt Set: hPa Rwy Elev: 1 hPa Trans level: FL090 Trans alt: 18000' 1. When local altimeter is not available, procedure is not authorized. 2. COMMUNICATIONS FAILURE: initiate procedure in accordance with ATC instructions and published chart.							



Gnd speed-Kts	60	90	120	150	180	2000' ↑ via FNC 109.0 R-001	3000' ← via FNC 109.0 R-340
Descent Angle	3.00^	320	480	640	800		
MAP at D1.4 or FAF to MAP	3.6	3:36	2:28	1:51	1:28	1:14	

STRAIGHT-IN LANDING RWY 36 .CEILING REQUIRED.				CIRCLE-TO-LAND		
MDA(H) 650' (622')				Max Kts	MDA(H)	CEIL-VIS
A	700' - 1600m			90	660' (632')	700' - 1600m
B	700' - 1600m			120	760' (732')	800' - 2400m
C	700' - 3000m			140	860' (832')	900' - 3200m
D	NOT APPLICABLE			D	NOT APPLICABLE	

MPEJ/ONX



COLON, PANAMA VOR Rwy 36

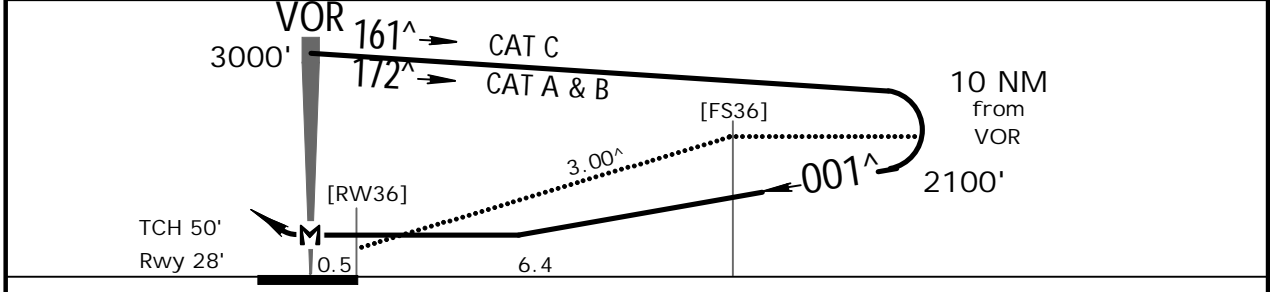
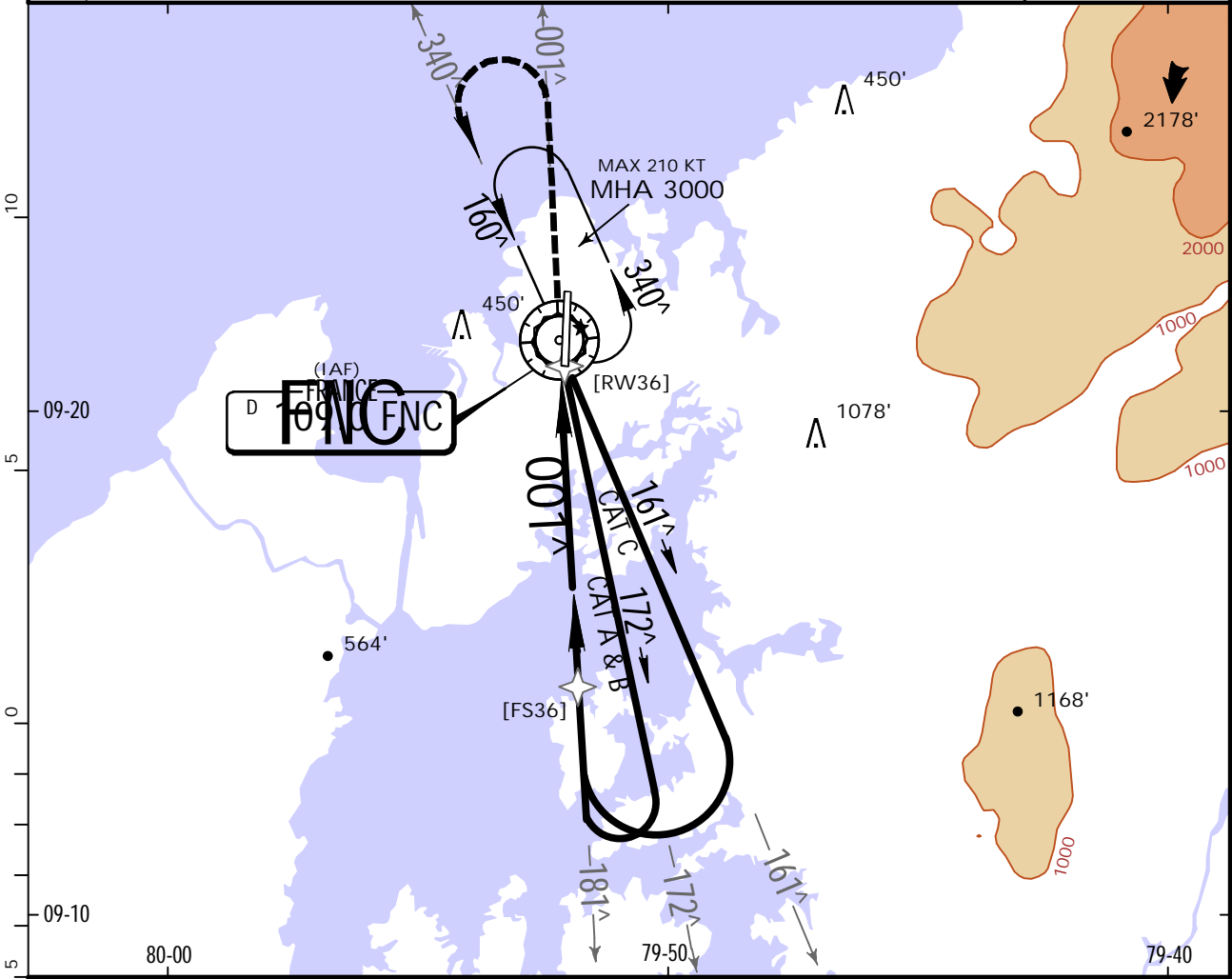
ENRIQUE A JIMENEZ

27 JUL 18

13-4

CAT A, B & C

*ATIS 127.8		PANAMA Approach 119.7 121.2		*JIMENEZ Tower 118.5		*Ground 121.7	
VOR FNC 109.0	Final Apch Crs 001^	No FAF		MDA(H) 750' (722')	Apt Elev 28'	Rwy 28'	
<p>MISSED APCH: Climb to 2000' outbound via FNC VOR R-001, then climbing LEFT turn to 3000' direct to FNC VOR inbound via R-340 and hold. Do not turn before missed approach point.</p> <p>Alt Set: hPa Rwy Elev: 1 hPa Trans level: FL190 Trans alt: 18000'</p> <p>1. When local altimeter is not available, procedure is not authorized. 2. COMMUNICATIONS FAILURE: initiate procedure in accordance with ATC instructions and published chart.</p>							<p>MSA FNC VOR</p>



Gnd speed-Kts	70	90	100	120	140	160	2000' ↑ via FNC 109.0 R-001 3000' ← via FNC 109.0 R-340
Descent Angle	3.00^	372	478	531	637	849	
MAP at VOR							

STRAIGHT-IN LANDING RWY 36 .CEILING REQUIRED.		CIRCLE-TO-LAND	
MDA(H) 750' (722')		Max Kts	CEIL-VIS
A	800' - 1600m	90	750' (722') 800' - 1600m
B	800' - 2000m	120	760' (732') 800' - 2400m
C	800' - 3500m	140	860' (832') 900' - 3500m
D	NOT APPLICABLE	D	NOT APPLICABLE

Chart changes since cycle 13-2020

ADD = added chart, REV = revised chart, DEL = deleted chart.

ACT PROCEDURE IDENT

INDEX

REV DATE

EFF DATE

COLON, (ENRIQUE A JIMENEZ - MPEJ)

TERMINAL CHART CHANGE NOTICES

No Chart Change Notices for Airport MPEJ