

List of pages in this Trip Kit

Trip Kit Index

Airport Information For NFFN

Terminal Charts For NFFN

Revision Letter For Cycle 20-2018

Change Notices

Notebook

General Information

Location: NADI FJI
ICAO/IATA: NFFN / NAN
Lat/Long: S17° 45.38', E177° 26.62'
Elevation: 59 ft

Airport Use: Public
Daylight Savings: Observed
UTC Conversion: -12:00 = UTC
Magnetic Variation: 13.0° E

Fuel Types: 100-130 Octane, Jet A-1
Repair Types: Minor Airframe, Minor Engine
Customs: Yes
Airport Type: IFR
Landing Fee: No
Control Tower: Yes
Jet Start Unit: No
LLWS Alert: No
Beacon: Yes

Sunrise: 1744 Z
Sunset: 0610 Z

Runway Information

Runway: 02
Length x Width: 10518 ft x 148 ft
Surface Type: bitu
TDZ-Elev: 35 ft
Lighting: Edge, ALS

Runway: 09
Length x Width: 7001 ft x 148 ft
Surface Type: bitu
TDZ-Elev: 17 ft
Lighting: Edge, ALS

Runway: 20
Length x Width: 10518 ft x 148 ft
Surface Type: bitu
TDZ-Elev: 41 ft
Lighting: Edge

Runway: 27
Length x Width: 7001 ft x 148 ft
Surface Type: bitu
TDZ-Elev: 59 ft
Lighting: Edge

Communication Information

ATIS: 127.900

Nadi Tower: 118.100

Nadi Tower: 119.100

Nadi Ground: 118.100

Nadi Clearance Delivery: 119.100 Departure Service

Nadi Approach: 119.100

NFFN/NAN
NADI INTL

JEPPESSEN
17 JUL 15 (10-3) .Eff.23.Jul.

NADI, FIJI IS
.SID.

Apt Elev 59'
Trans level: FL130 Trans alt: 11000'
1. Continue climbing throughout SIDs unless otherwise cleared.
2. Level restrictions at or above quoted minima may be imposed by ATC for aircraft separation purposes.

ALFA DEPARTURE [ALPHA]

TUTRI S16 01.1 E177 46.7
KABAR S16 14.5 E178 20.1
D 1 NN NN S17 39.3 E177 23.8
At or above 3000'
At or above 2000'
At 2500'

Direct distance from Nadi Intl to:
NN 7 NM

RWY	INITIAL CLIMB
02	Turn LEFT, track 260° climbing to 2000' or above, then RIGHT turn, track to NN. NOTE: LEFT turn to 260° shall commence no later than Rwy 02 end. High terrain NORTHEAST of airport.
09	Turn RIGHT, track 270° climbing to 2000' or above, then RIGHT turn, track to NN.
20	MAINTAIN runway track to 2500', turn RIGHT, track to NN.
27	Climb on track 270° to 2000' or above, then RIGHT turn, track to NN.

BRAVO DEPARTURE

GUSMA S16 14.1 E176 28.5
PUNIX S15 58.9 E177 17.7
TUTRI S16 01.1 E177 46.7
KABAR S16 14.5 E178 20.1
INTID S16 51.5 E175 51.8
PACKO S16 47.0 E178 53.3
MADLO S17 49.5 E177 23.2
Minimum set heading altitude 3000'
At 2500'

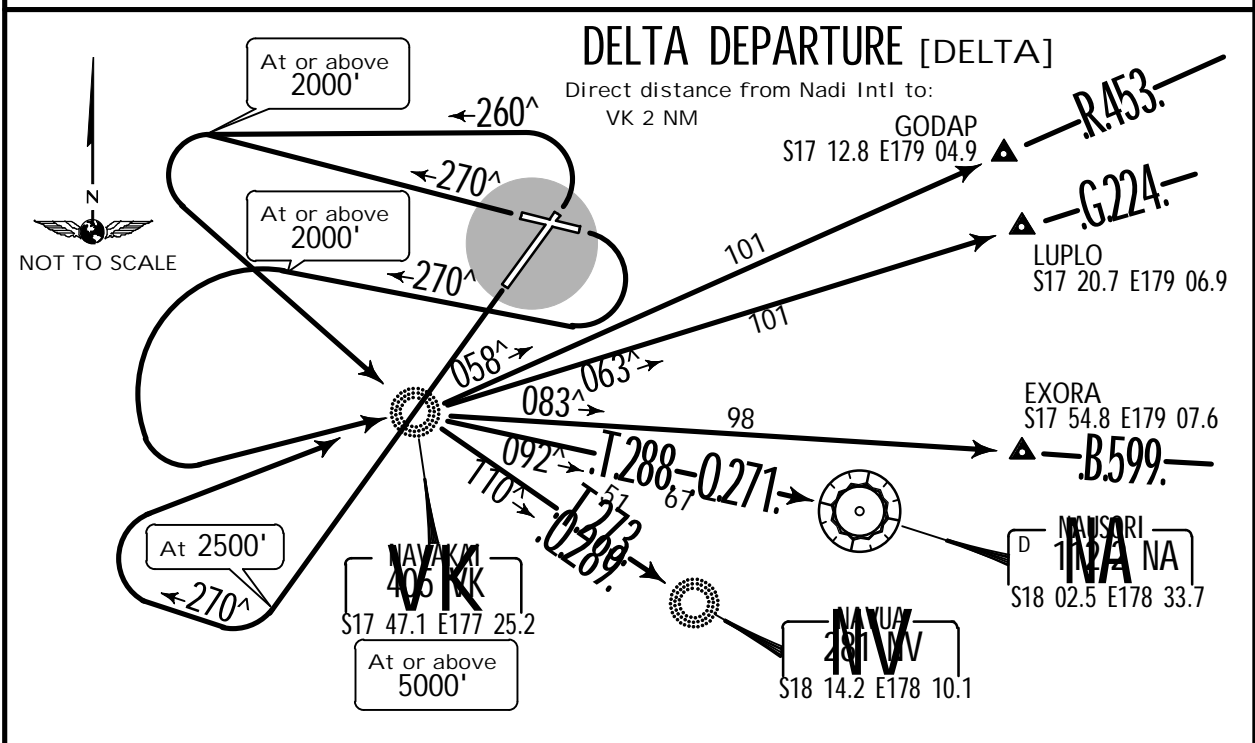
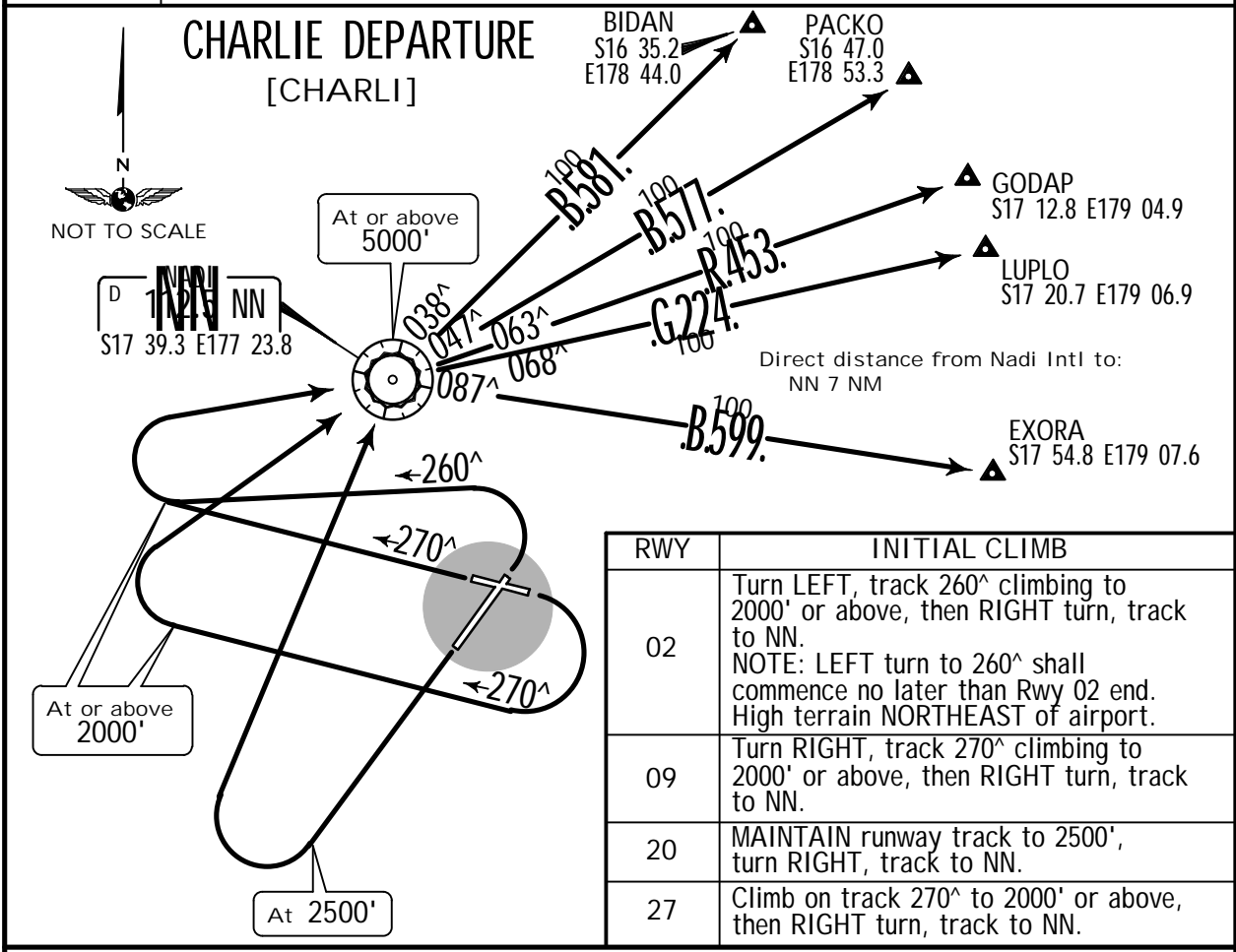
RWY	INITIAL CLIMB
02	Turn LEFT, track 260° to intercept 320° bearing from AL climbing to minimum set heading altitude 3000'. NOTE: LEFT turn to 260° shall commence no later than Rwy 02 end. High terrain NORTHEAST of airport.
09	Turn RIGHT, track 270° to intercept 320° bearing from AL climbing to minimum set heading altitude 3000'.
20	MAINTAIN runway track to 2500', turn RIGHT to intercept 320° bearing from AL climbing to minimum set heading altitude 3000'.
27	Climb on track 270° to intercept 320° bearing from AL climbing to minimum set heading altitude 3000'.

NFFN/NAN
NADI INTL

JEPPESEN
17 JUL 15 (10-3A) .Eff.23.Jul.

NADI, FIJI IS
.SID.

Apt Elev 59' Trans level: FL130 Trans alt: 11000'
1. Continue climbing throughout SIDs unless otherwise cleared.
2. Level restrictions at or above quoted minima may be imposed by ATC for aircraft separation purposes.



RWY	INITIAL CLIMB
02	Turn LEFT, track 260° climbing to 2000' or above, then LEFT turn, track to VK. NOTE: LEFT turn to 260° shall commence no later than Rwy 02 end. High terrain NORTHEAST of airport.
09	Turn RIGHT, track 270° climbing to 2000' or above, then LEFT turn, track to VK.
20	MAINTAIN runway track to 2500', turn RIGHT, track to VK.
27	Climb on track 270° to 2000' or above, then LEFT turn, track to VK.

NFFN/NAN
NADI INTL

JEPPESEN
21 NOV 14 (10-3B)

NADI, FIJI IS
.SID.

Apt Elev 59' Trans level: FL130 Trans alt: 11000'
1. Continue climbing throughout SIDs unless otherwise cleared.
2. Level restrictions at or above quoted minima may be imposed by ATC for aircraft separation purposes.

ECHO DEPARTURE

RWY	INITIAL CLIMB
02	Turn LEFT, track to and cross MI NDB at or above 3000', thence turn LEFT track 115 [^] (295 [^] bearing to MI NDB), climb to Minimum Set Heading Altitude 4000'.
09	Turn RIGHT, track to and cross MI NDB at or above 3000', thence turn LEFT track 115 [^] (295 [^] bearing to MI NDB), climb to Minimum Set Heading Altitude 4000'.
20	Track to and cross MI NDB at or above 3000', thence climb on 115 [^] (295 [^] bearing to MI NDB) to Minimum Set Heading Altitude 4000'.
27	Turn LEFT, track to and cross MI NDB at or above 3000', thence turn LEFT track 115 [^] (295 [^] bearing to MI NDB), climb to Minimum Set Heading Altitude 4000'.

Direct distance from Nadi Intl to:
MI NDB 11 NM

MI NDB: S17 54.0 E177 19.5
Minimum set heading altitude 4000'
At or above 3000'

MI NDB: S18 14.2 E178 10.1
MI NDB: S18 02.9 E178 33.5

FOXTROT DEPARTURE

RWY	INITIAL CLIMB
02	Turn LEFT, track to and cross MI NDB at or above 3000'.
09	Turn RIGHT, track to and cross MI NDB at or above 3000'.
20	Track to and cross MI NDB at or above 3000'.
27	Turn LEFT, track to and cross MI NDB at or above 3000'.

Direct distance from Nadi Intl to:
MI NDB 11 NM

MI NDB: S17 54.0 E177 19.5
At or above 3000'

AGTOS S19 19.0 E177 12.5
85
172[^]

QNE (FL130 OR ABOVE)
QNH (11000 OR BELOW)
QNE

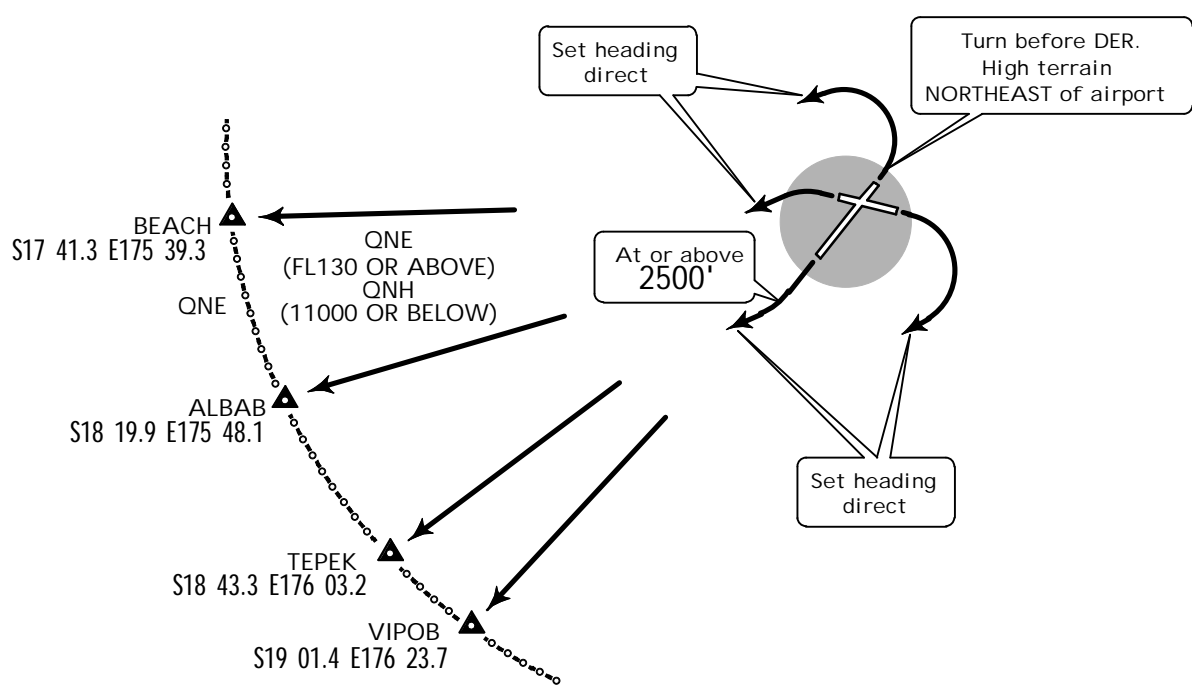
NFFN/NAN
NADI INTL

JEPPESEN
21 NOV 14 (10-3C)

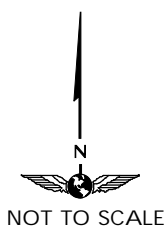
NADI, FIJI IS
.SID.

Apt Elev 59'
FOR QNE/QNH INFO SEE GRAPHIC
1. Continue climbing throughout SIDs unless otherwise cleared.
2. Level restrictions at or above quoted minima may be imposed by ATC for aircraft separation purposes.

GOLF DEPARTURE



Direct distance from Nadi Intl to:
ALBAB 100 NM
BEACH 103 NM
TEPEK 98 NM
VIPOB 97 NM



RWY	INITIAL CLIMB
02	Turn LEFT, set heading direct.
09	Turn RIGHT, set heading direct.
20	MAINTAIN runway track to 2500', turn RIGHT, set heading direct.
27	Set heading direct.

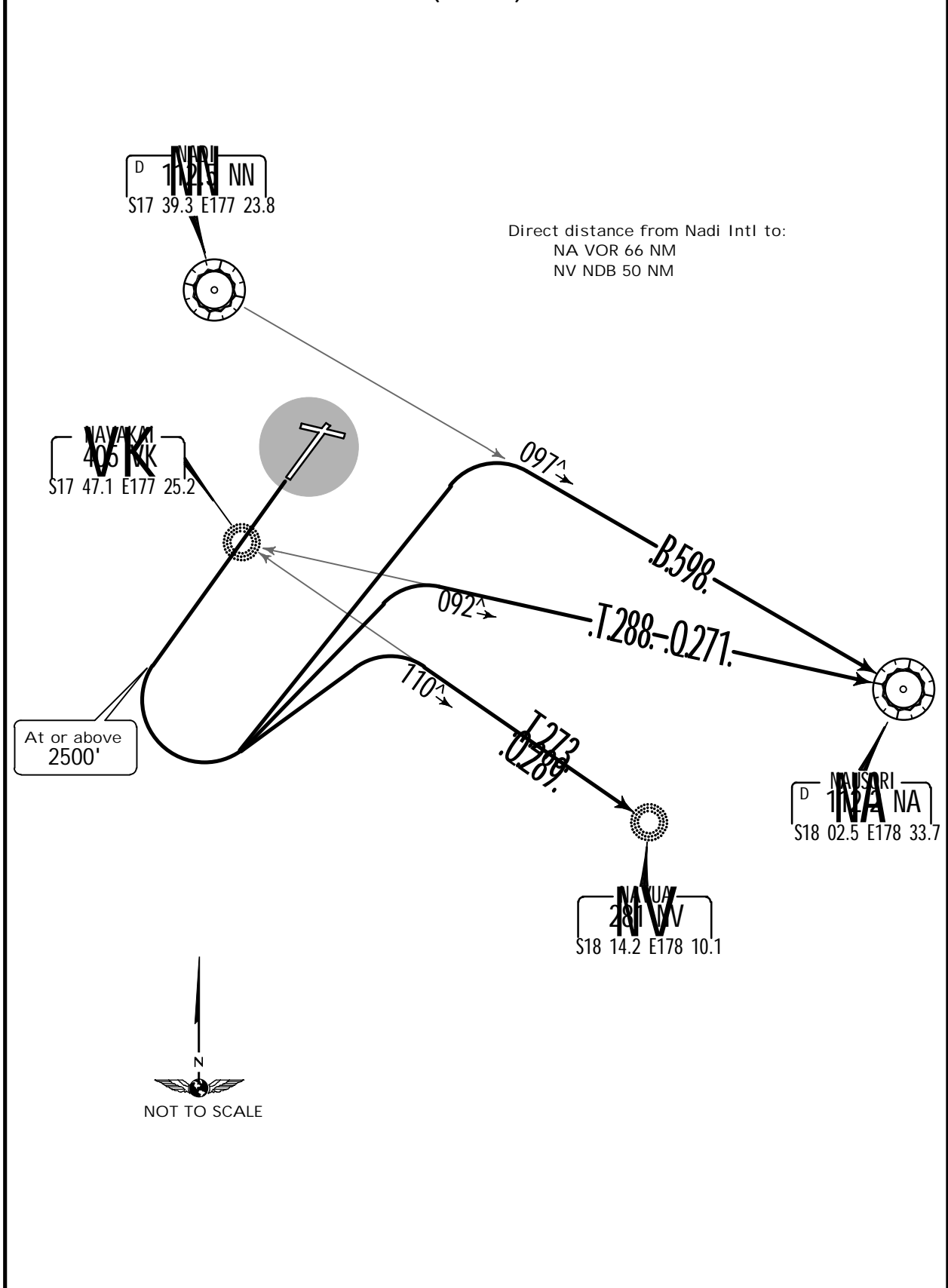
NFFN/NAN
NADI INTL

JEPPESEN
17 JUL 15 (10-3D) .Eff.23.Jul.

NADI, FIJI IS
.SID.

Apt Elev 59'	Trans level: FL130 Trans alt: 11000' 1. Continue climbing throughout SID unless otherwise cleared. 2. Level restrictions at or above quoted minima may be imposed by ATC for aircraft separation purposes.
-----------------	--

HOTEL DEPARTURE (RWY 20)



INITIAL CLIMB

MAINTAIN runway track to at or above 2500'. Turn LEFT, intercept route:
T-273, Q-289 VK NDB to NV NDB.
B-598 NN VOR to NA VOR.
T-288, Q-271 VK NDB to NA VOR.

NFFN/NAN



22 NOV 13

10-4

.NOISE.
NADI, FIJI IS
NADI INTL

NOISE ABATEMENT PROCEDURES

Local Time minus 12 HOURS = UTC

Jet Noise Abatement Climb Procedures Apply to RWY 20

- a. Climb at V₂+10 kts to V₂+20 kts - or body angle limit speed; and
- b. Maintain takeoff power to height above the aerodrome of 1500 ft; and
- c. Then reduce thrust to not less than climb power/thrust and maintain a speed of V₂+10 kts to V₂+20 kts to a height above the aerodrome of 3000 ft; and
- d. Accelerate to enroute climb speed with flap retraction on schedule; and
- e. Maintain 2500 ft on runway track unless required to do otherwise in accordance with specific ATC instruction.

As an alternative to the procedures detailed above, operators of aircraft which have engines with a bypass ratio greater than 3.5:1 may use the following procedures:

- a. Climb at V₂+10 kts to V₂ + 20 kts - or body angle limit speed; and
- b. Maintain takeoff power to height above the aerodrome of 1000 ft; and
- c. Then maintaining a positive rate of climb, accelerate to zero flap minimum safe maneuvering speed (V_{ZF}) retracting flaps on schedule; and
- d. Then reduce to normal climb power/thrust; and

NOTE: For airplanes with slow flap retraction, reduce power/thrust at an intermediate flap setting.

- e. Continue climb at not greater than V_{ZF}+10 kts to a height above the aerodrome of 3000 ft; and
- f. Accelerate smoothly to enroute climb speed; and
- g. Maintain 2500 ft on runway track unless required to do otherwise in accordance with a SID or specific ATC instruction.

Noise Sensitive Area

All departing and arriving aircraft are requested whenever possible to remain clear of Sonaisali Island Resort (Island extends south from S1749 E17721 to S1750 E17721). Center of the island is located 179 Degrees/10.5 DME from the Nadi VOR.

Arriving Aircraft

Arriving aircraft on visual approaches will not be permitted to descend below 3000 ft until aligned with RWY 02 centerline and established on the glide-path, at Momi (MI) NDB.

VFR Operations

All VFR departures, arrivals and operations in the Nadi Airport Traffic Circuit shall:

- a. Avoid flying over the resorts at Denarau Island; or
- b. Fly over the Resorts at Denarau Island at an altitude of not less than 2000 ft; or
- c. Special arrival procedures Rwy 27: All circuit traffic and VFR arrival from the South and West shall only descend below 1000 ft when aligned with Rwy 27 centerline. Alignment with Rwy 27 centerline shall be conducted at or beyond 5 NM. Flying over the NOVOTEL Hotel, bearing 125 degrees Mag, 1170m Southeast of Rwy 27 threshold, and TANOVA Apartments, bearing 160 degrees Mag, 755m Southeast of Rwy 27 threshold, is prohibited below 1500 ft.

NFFN/NAN

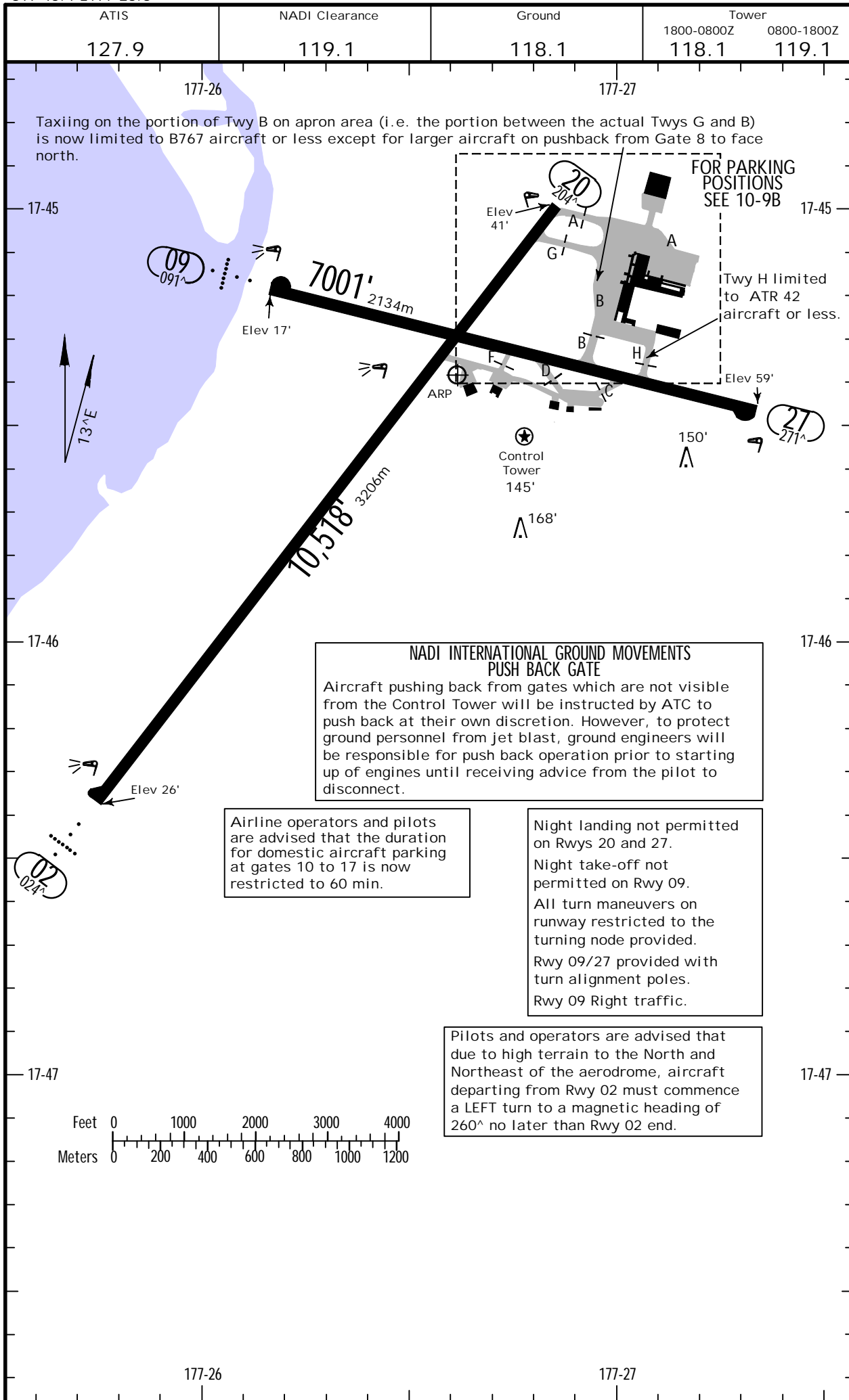
JEPPESSEN

NADI, FIJI IS

Apt Elev 59
S17 45.4 E177 26.6

8 SEP 17 (10-9) .Eff. 14.Sep.

NADI INTL



NFFN/NAN



NADI, FIJI IS

8 SEP 17 (10-9A) .Eff. 14.Sep.

NADI INTL

GENERAL										
<p>CAUTION: Flocks of large birds may be present within the vicinity of the aerodrome and on the RWY. Dispersal measures are available 24HR. ATC will issue advice on the presence of birds when applicable. Light aircraft operations by prior permission only. Operations by non-radio aircraft not permitted.</p>										
ADDITIONAL RUNWAY INFORMATION										
RWY					USABLE LENGTHS		TAKE-OFF		WIDTH	
					LANDING BEYOND					
					Threshold	Glide Slope	DAY	NIGHT		
02	HIRL ALS 1	PAPI-L (angle 3.00°)				9533'	2906m		148'	
20	HIRL 1	PAPI-L (angle 3.20°)						NA	45m	
<p>1 PAPI recognition and range may be reduced to 1 NM (1.8 km) or less by smoke from cane field fires.</p>										
09	RL ALS 2	PAPI-L (angle 3.00°)						NA	148'	
27	RL 2	PAPI-L (angle 3.00°)						NA	45m	
<p>2 PAPI recognition and range may be reduced to 1 NM (1.8 km) or less by smoke from cane field fires.</p>										
TAKE-OFF & DEPARTURE PROCEDURE										
Rwys 20, 27										
Vis Confirmed by the Pilot-In-Command by Observation of RL from Take-off Position					Other					
RCLM										
1 Eng	Not Applicable				300'-1500m					
2 Eng	800m (Prop must have operative Auto-Feathering)									
3 & 4 Eng	800m									
Rwy 02					Rwy 09					
DAY					DAY					
NIGHT					NIGHT					
1 & 2 Eng	500'-1500m				500'-1500m			NA		
3 & 4 Eng										
DEPARTURE PROCEDURE										
<p>Rwy 02: Left turn to a magnetic heading of 260° should commence no later than Rwy 02 end.</p> <p>Rwy 09: Make Right turn to a magnetic heading of 270° after take-off.</p>										
FOR FILING AS ALTERNATE										
Precision			Twin NDB				Other			
A	600'-3000m		800' - 4000m				NA			
B			800' -5 km							
C			1000' -6 km							
D			1100' -7 km							

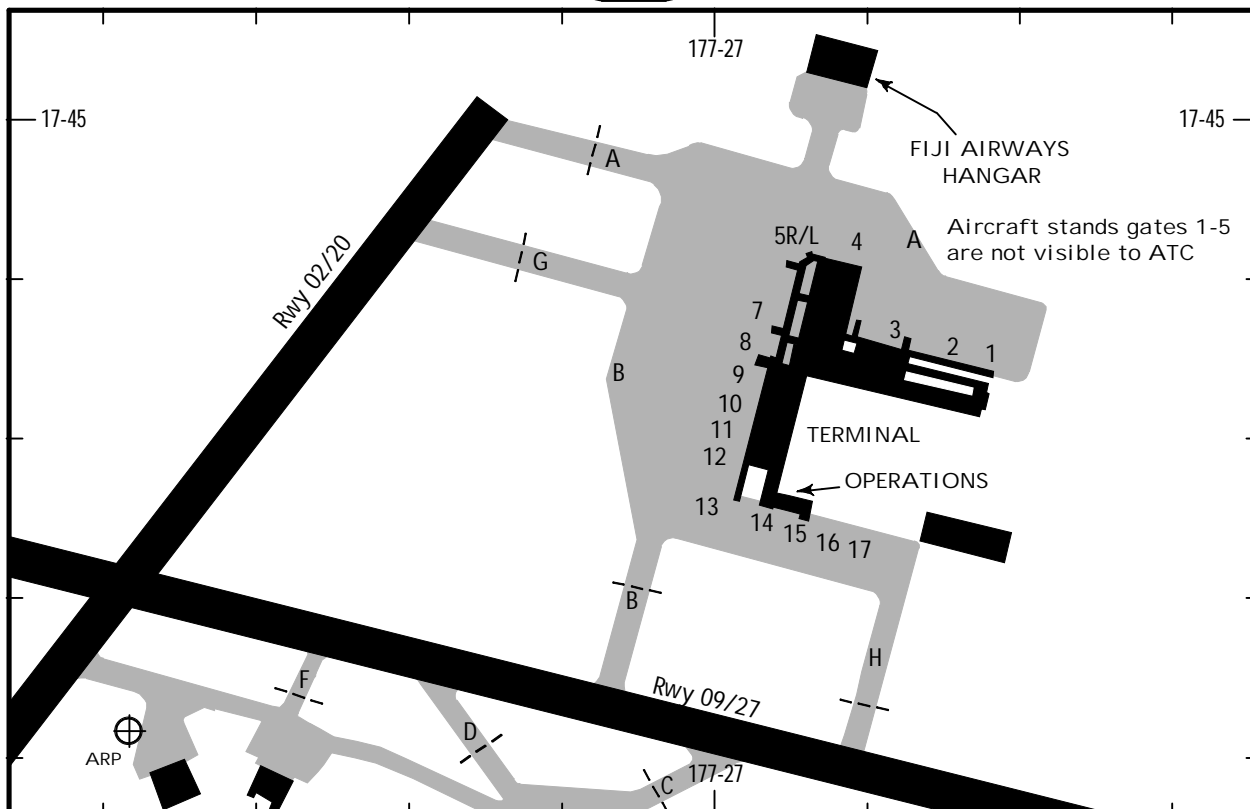
NFFN/NAN

JEPESEN

NADI, FIJI IS

8 SEP 17 (10-9B) .Eff. 14.Sep.

NADI INTL



PARKING STAND COORDINATES

STAND No.	COORDINATES	ELEV (ft)	STAND No.	COORDINATES	ELEV (ft)
INTERNATIONAL GATES			DOMESTIC GATES		
1A	S17 45.2 E177 27.2	-	10	S17 45.2 E177 27.0	38
1B	S17 45.2 E177 27.2	-	11, 12	S17 45.2 E177 27.0	37
2A	S17 45.2 E177 27.1	-	13	S17 45.3 E177 27.0	37
2B	S17 45.2 E177 27.1	-	14	S17 45.3 E177 27.0	38
3	S17 45.2 E177 27.1	41	15	S17 45.3 E177 27.0	40
4	S17 45.1 E177 27.1	37	16	S17 45.3 E177 27.0	42
5L/R	S17 45.1 E177 27.0	36	17	S17 45.3 E177 27.1	43
7	S17 45.1 E177 27.0	38			
8	S17 45.2 E177 27.0	39			
9	S17 45.2 E177 27.0	38			

STANDS UNRESTRICTED: Stand Nos. 1B, 2A, 5R, 7 & 8
STAND RESTRICTIONS:

Stands 1A, 2B, 4, 5L, 9 for use by acft with wingspan not exceeding 117' (35.8m).
 Stands 10, 11, 14 for use by acft with wingspan not exceeding 81' (24.6m).
 Stands 12, 13, 17 for use by acft with wingspan not exceeding 66' (20.0m).
 Stands 15, 16 for use by acft with wingspan not exceeding 89' (27.1m).

When Gate 1A is occupied gates 2A or 2B is available.
 When Gate 1B is occupied gates 2B is available.
 When Gate 2A is occupied gates 1A is available.
 When Gate 2B is occupied gates 1A or 1B is available.
 Executive jets shall have priority over commercial aircrafts at gates 1 and 9.
 Gate 10 reserved for helicopter operations unless authorized by ATC.
 ATR42 has priority at gate14 over other aircrafts.
 ATR72 has priority at gates 15 and 16 over other aircrafts.
 DHC6 has priority at gate 17 over other aircrafts.
 Aircrafts parked at gates 10-13 shall park facing west.
 Aircrafts parked at gates 14-17 shall park facing east.

NFFN/NAN

NADI INTL

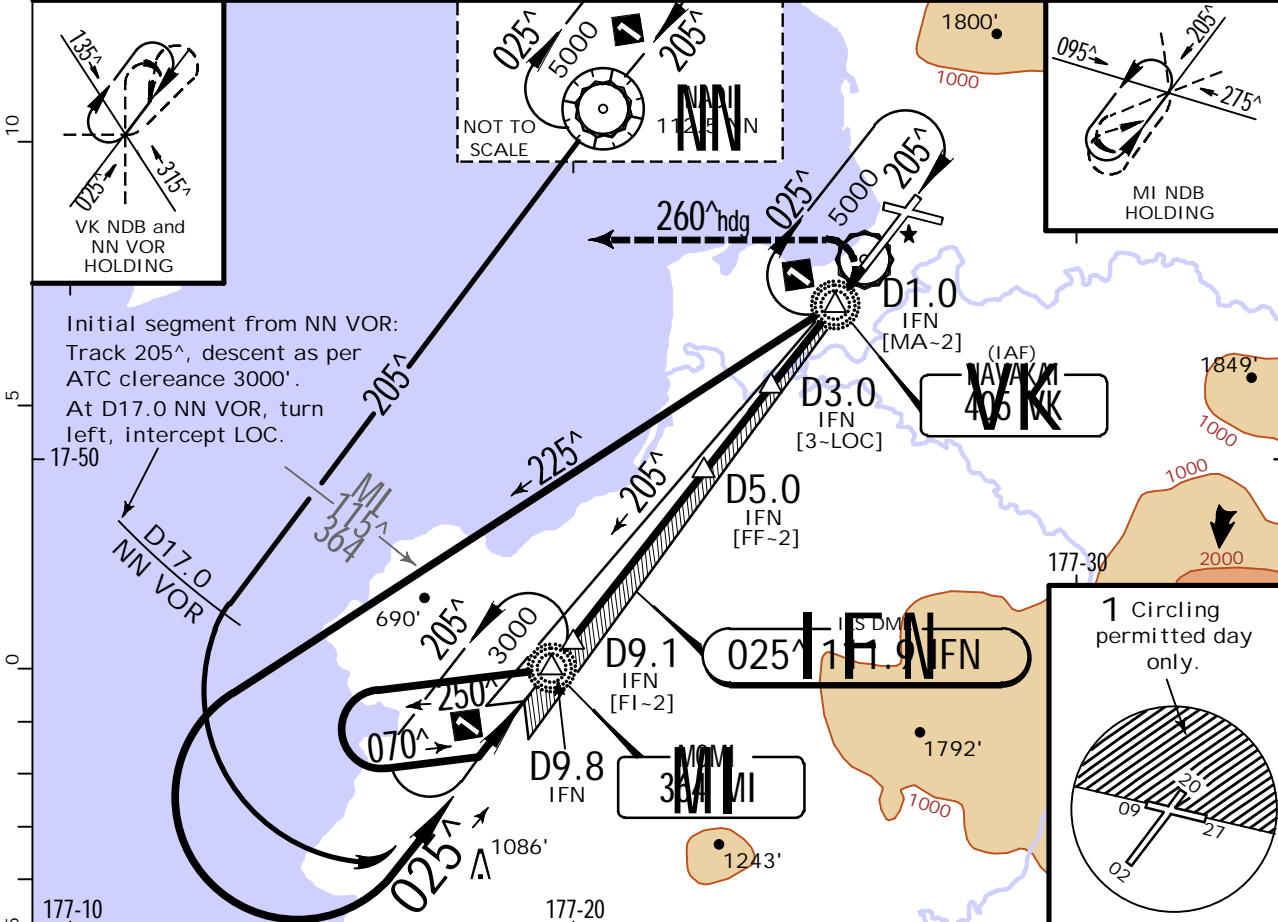


13 JUL 18 (11-1) .Eff.19.Jul.

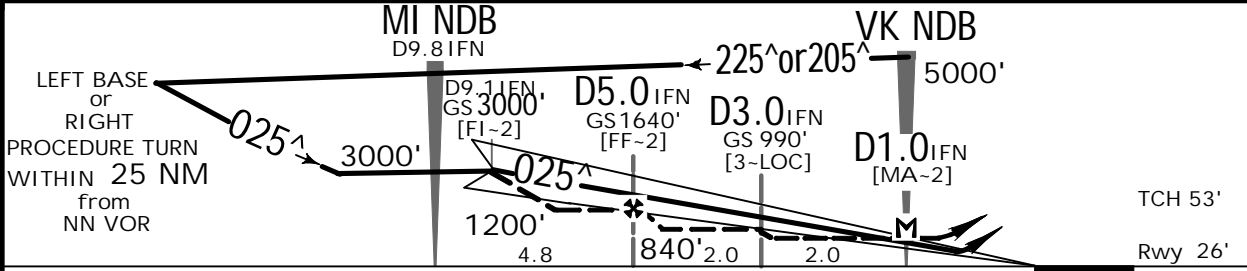
NADI, FIJI IS

ILS or LOC Rwy 02

ATIS 127.9		NADI Approach 119.1		NADI Tower 1800-0800Z 118.1		0800-1800Z 119.1		Ground 118.1	
LOC IFN 111.9		Final Apch Crs 025 [^]		GS D9.1 IFN 3000' (2974')		ILS DA(H) (CONDITIONAL) 240' (214')		Apt Elev 59' Rwy 26'	
MISSED APCH: Turn LEFT, heading 260 [^] . Climb to 3000' and await further instructions from ATC. Turn not permitted before D1.0 IFN and below 300'. Max 185 KT until turn complete.									
Alt Set: hPa		Rwy Elev: 1 hPa		Trans Level: FL 130		Trans alt: 11000'			
1. DME required.									MSA VK NDB



LOC (GS out)	IFN DME	10.0	9.0	8.0	7.0	6.0	5.0	4.0	3.0	2.0	1.2	0.7
	ALTITUDE	3300'	2960'	2630'	2300'	1970'	1640'	1310'	990'	660'	MDA	DA



STRAIGHT-IN LANDING RWY 02						CIRCLE-TO-LAND								
Missed approach climb gradient min 5% to 1500'			Missed approach climb gradient min 2,5% to 350'			LOC (GS out) MDA(H) 420' (394')			Not Authorized North of Rwy 09/27			1 Unrestricted - permitted day only		
FULL HIRL out HIALS out			FULL HIRL out HIALS out			FULL HIRL out HIALS out			Max MDA(H)			Max MDA(H)		

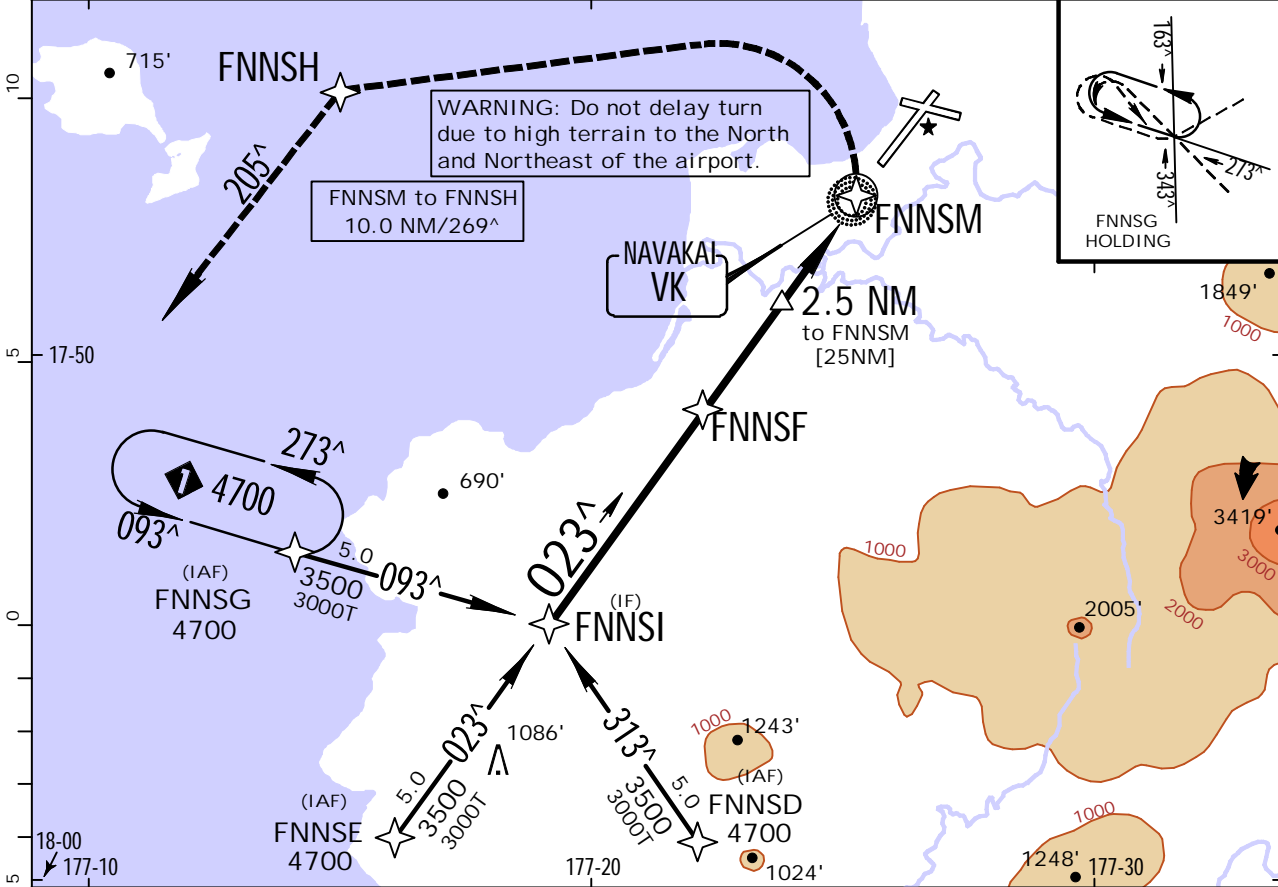
PANS OPS	A		B		C		D		Max Kts	MDA(H)		MDA(H)	
	800m	1200m	1500m	1200m	1500m	1500m	2400m	100		730'(671') -2.8 km	730'(671') -5.0km	135	1320'(1261') -5.0km
								180		1020'(961') -3.7 km	2220'(2161') -6.0km	205	2530'(2471') -6.0km

NFFN/NAN
NADI INTL

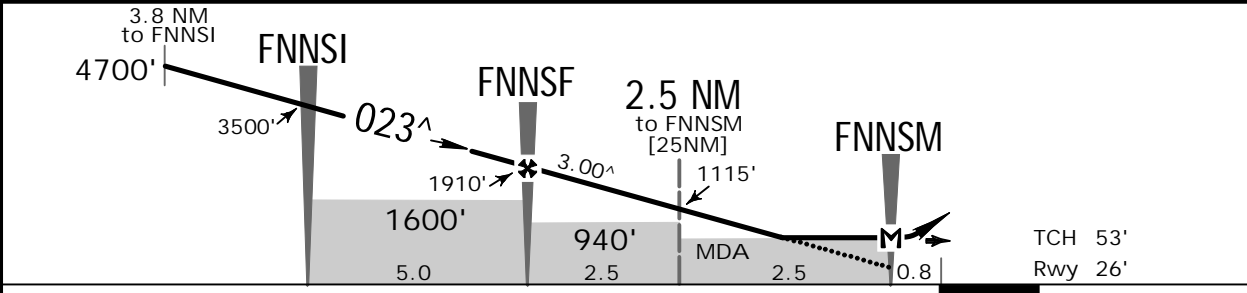
JEPPESSEN
24 AUG 18 (12-1)

NADI, FIJI IS
RNAV (GNSS) Rwy 02

ATIS 127.9		NADI Approach 119.1		NADI Tower 1800-0800Z 118.1 0800-1800Z 119.1		Ground 118.1
RNAV	Final Apch Crs 023 [^]	Procedure Alt FNN SF 1910' (1884')	LNAV MDA(H) 510' (484')	Apt Elev 59' Rwy 26'		<p>MSA VK NDB</p>
<p>MISSED APCH: Turn LEFT, immediately track direct to FNN SH, then track 205[^]. Climb to 3400'.</p> <p>Alt Set: hPa Rwy Elev: 1 hPa Trans level: FL 130 Trans alt: 11000'</p> <p>MAX for initial 220 KT, for missed approach turn 190 KT.</p>						



NM to NEXT WPT	3.8	FNN SI	4.0	3.0	2.0	1.0	FNN SF	4.0	3.0	2.0	1.0	0.6	FNN SM
ALTITUDE	4700'	3500'	3185'	2865'	2545'	2230'	1910'	1590'	1275'	955'	635'	510'	



Gnd speed-Kts	70	90	100	120	140	160	ALS			
Descent angle	3.00 [^]	372	478	531	637	743	849			
MAP at FNN SM										

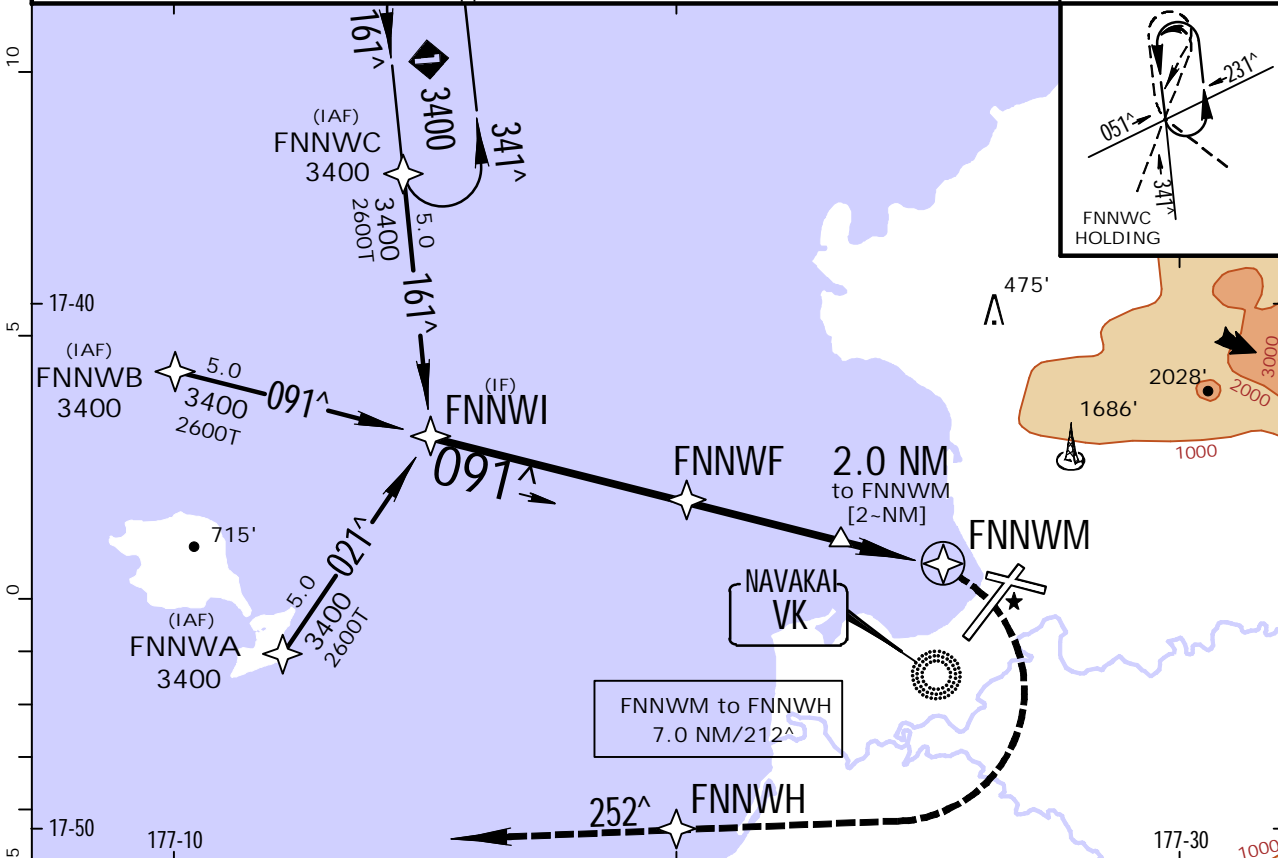
PANS OPS	STRAIGHT-IN LANDING RWY 02		CIRCLE-TO-LAND				<p>1 Circling permitted day only.</p>
	LNAV		Not Authorized North of Rwy 09/27		1 Unrestricted - permitted day only		
	MDA(H) 510' (484')		MDA(H)		MDA(H)		
	ALS out		730' (671') -2.8km		730' (671') -5.0km		
	1600m		1020' (961') -3.7km		2220' (2161') -6.0km		
A			1150' (1091') -4.6km		2530' (2471') -6.0km		
B							
C							
D							

NFFN/NAN
NADI INTL

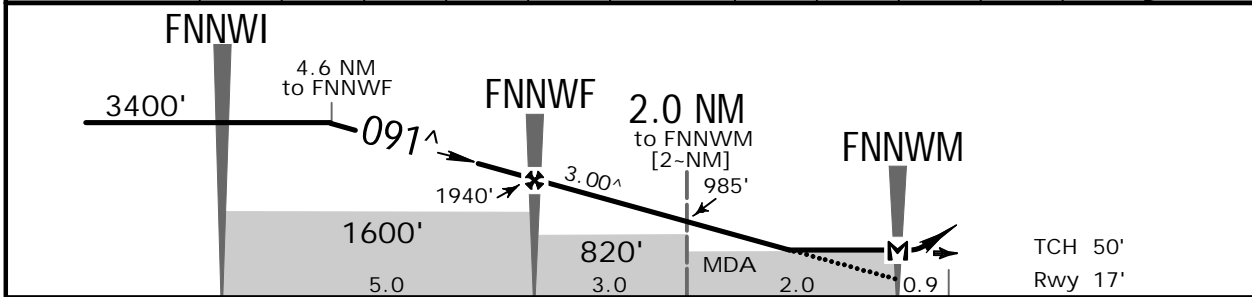
JEPPESSEN
24 AUG 18 (12-2)

NADI, FIJI IS
RNAV (GNSS) Rwy 09

BRIEFING STRIP™	ATIS	NADI Approach		NADI Tower		Ground
	127.9	119.1		1800-0800Z 118.1	0800-1800Z 119.1	118.1
	RNAV	Final Apch Crs 091[^]	Procedure Alt FNNWF 1940' (1923')	LNAV MDA(H) 360' (343')	Apt Elev 59' Rwy 17'	
MISSED APCH: Turn RIGHT, track direct to FNNWH, thence 252 [^] . Climb to 3400'.						
Alt Set: hPa Rwy Elev: 1 hPa Trans level: FL 130 Trans alt: 11000' MAX for initial 220 KT, for missed approach turn 200 KT.						



NM to NEXT WPT	4.6	4.0	3.0	2.0	1.0	FNNWF	4.0	3.0	2.0	1.0	0.0	FNNWM
ALTITUDE	3400'	3215'	2895'	2575'	2255'	1940'	1620'	1300'	985'	665'	360'	



Gnd speed-Kts	70	90	100	120	140	160						
Descent angle	3.00 [^]	372	478	531	637	743	849					
MAP at FNNWM												

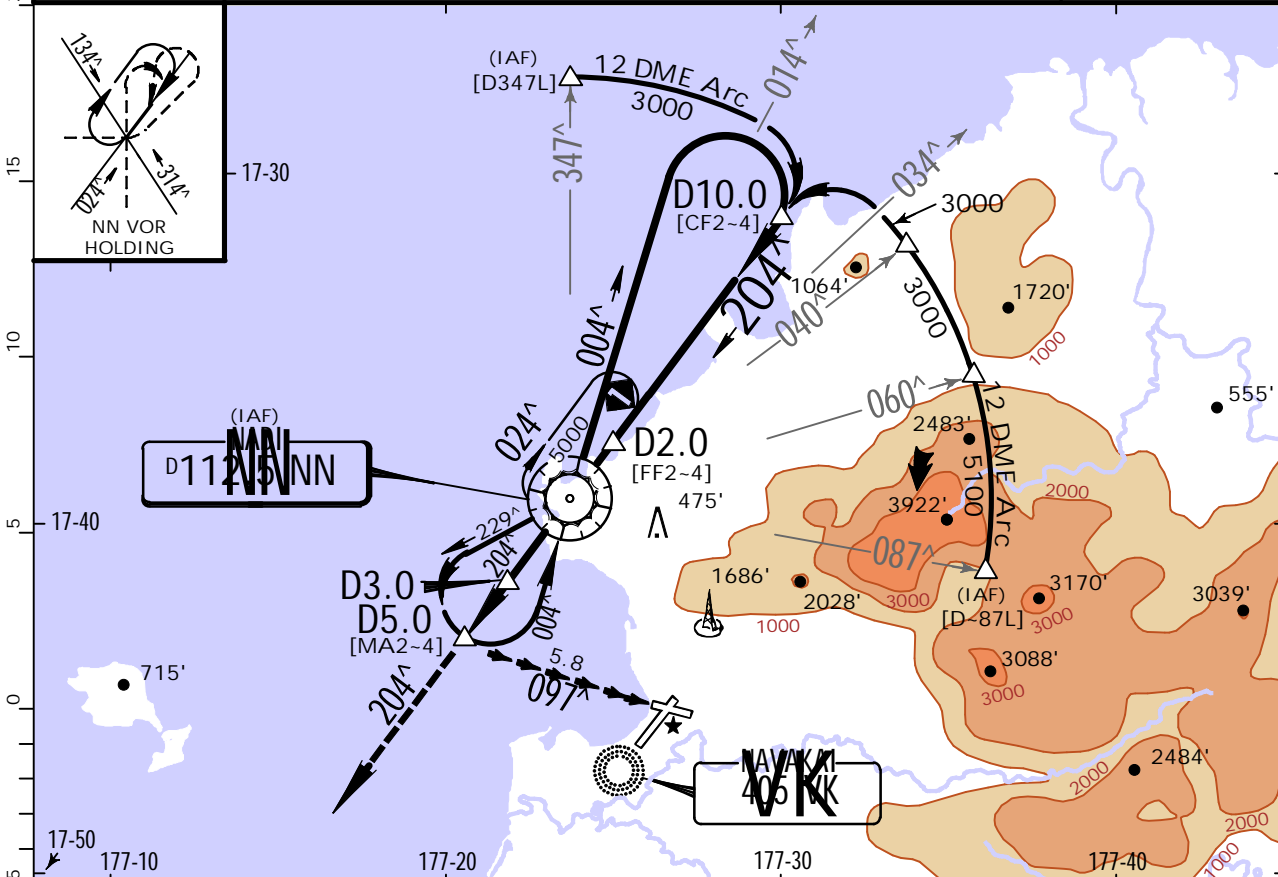
PANS OPS	STRAIGHT-IN LANDING RWY 09		CIRCLE-TO-LAND			1 Circling permitted day only. 	
	LNAV		Not Authorized North of Rwy 09/27				1 Unrestricted - permitted day only
	MDA(H) 360' (343')		Max Kts				MDA(H)
	ALS out		100	135	180		205
	A	1600m		730' (671') -2.8km	730' (671') -5.0km		730' (671') -5.0km
B			1020' (961') -3.7km	1320' (1261') -5.0km	2220' (2161') -6.0km		
C			NOT APPLICABLE	NOT APPLICABLE	NOT APPLICABLE		
D							

NFFN/NAN
NADI INTL

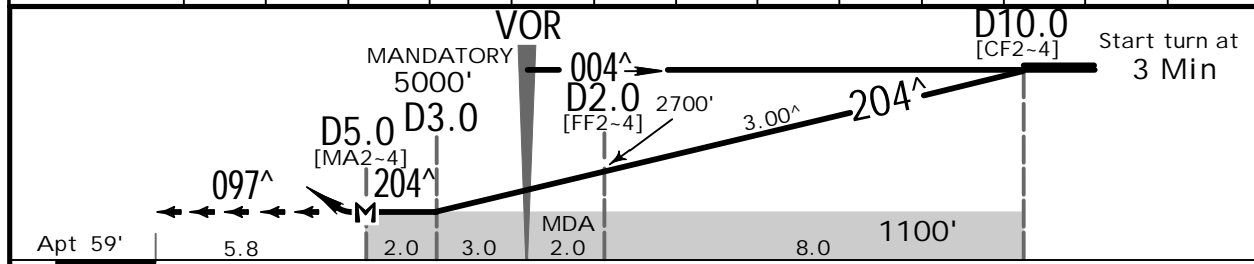
JEPPESSEN
24 AUG 18 **13-1**

**NADI, FIJI IS
TWELVE NORTH VOR**

ATIS 127.9		NADI Approach 119.1		NADI Tower 1800-0800Z 118.1		0800-1800Z 119.1		Ground 118.1	
VOR NN 112.5		Final Apch Crs 204 [^]		No FAF		MDA(H) Refer to Minimums		Apt Elev 59'	
MISSED APCH: Track NN VOR R-204, climb to 3000' and await instructions from ATC.									
Alt Set: hPa		Apt Elev: 2 hPa		Trans level: FL 130		Trans alt: 11000'		MSA VK NDB	



NN DME	3.0	2.0	1.0	VOR	1.0	2.0	3.0	4.0	5.0	6.0	7.0	8.0	9.0
ALTITUDE	1100'	1420'	1740'	2060'	2380'	2700'	3020'	3340'	3660'	3980'	4300'	4620'	4940'



Gnd speed-Kts	70	90	100	120	140	160	Lighting - Refer to Airport Chart	NN 112.5 R-204	3000' ↑
Descent Angle	3.00 [^]	372	478	531	637	849			
MAP at D5.0									

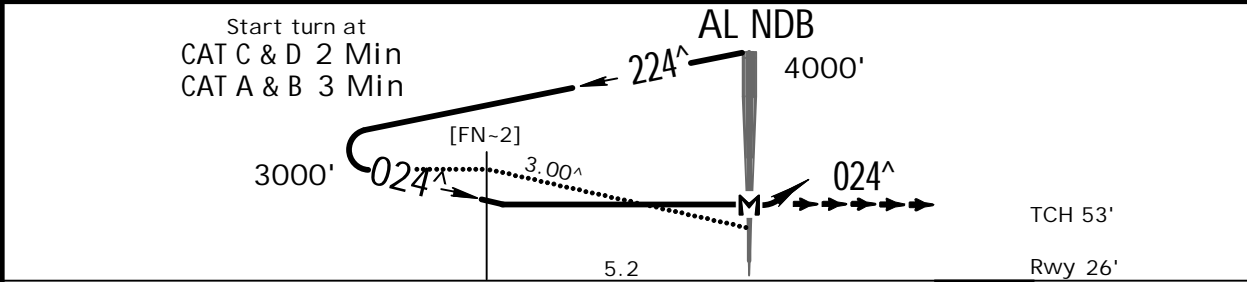
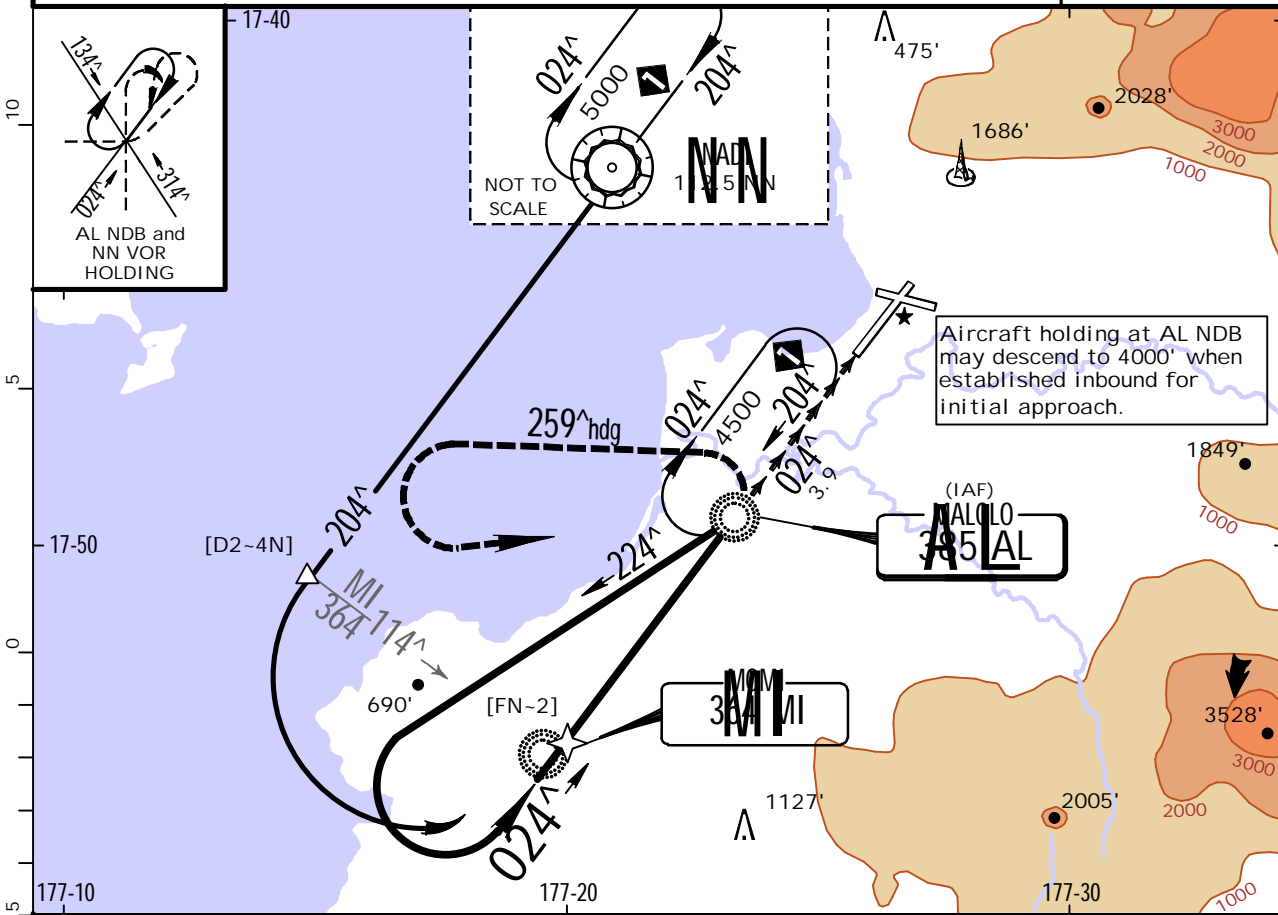
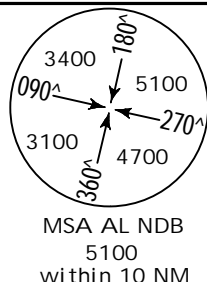
CIRCLE-TO-LAND				Rwy 20 DAY ONLY		1 Cat C, D: Left hand circuits, MAX 185 KT.
Max Kts	MDA(H)		Max Kts	MDA(H)		
A 100	1100' (1041') -5000m		100	1000' (941') -5 km		
B 135			135			
C	NOT APPLICABLE		180			
D			185	1 2100' (2041') -6 km		

NFFN/NAN
NADI INTL

JEPPESSEN
24 AUG 18 (16-1)

NADI, FIJI IS
NDB Z' Rwy 02

ATIS 127.9		NADI Approach 119.1		NADI Tower 1800-0800Z 118.1		0800-1800Z 119.1		Ground 118.1	
NDB AL 385		Final Apch Crs 024 [^]		No FAF		MDA(H) 1300' (1274')		Apt Elev 59' Rwy 26'	
MISSED APCH: Turn LEFT, heading 259 [^] . At 4500' turn LEFT, track to AL NDB. Await further instructions from ATC.									
Alt Set: hPa		Rwy Elev: 1 hPa		Trans level: FL 130		Trans alt: 11000'			



Gnd speed-Kts	70	90	100	120	140	160	ALS PAPI	259 [^] hdg
Descent Angle 3.00 [^]	372	478	531	637	743	849		

STRAIGHT-IN LANDING RWY02		CIRCLE-TO-LAND	
MDA(H) 1300' (1274')		1 Unrestricted - permitted day only	
ALS out		1 Circling permitted day only.	
A	3000m	Max Kts	MDA(H)
B		100	730' (671') -2.8km
C		135	1320' (1261') -5.0km
D		180	2220' (2161') -6.0km
		205	2530' (2471') -6.0km

PANS OPS

Chart changes since cycle 19-2018

ADD = added chart, REV = revised chart, DEL = deleted chart.

ACT PROCEDURE IDENT

INDEX

REV DATE

EFF DATE

NADI, (NADI INTL - NFFN)

TERMINAL CHART CHANGE NOTICES

No Chart Change Notices for Airport NFFN

SUDU..PONPA..PTA..GBE..DIL..VIE..SAVT