

List of pages in this Trip Kit

Trip Kit Index

Airport Information For MPBO

Terminal Charts For MPBO

Revision Letter For Cycle 02-2021

Change Notices

Notebook

General Information

Location: BOCAS DEL TORO PAN
ICAO/IATA: MPBO / BOC
Lat/Long: N09° 20.4', W082° 15.0'
Elevation: 5 ft

Airport Use: Public
Daylight Savings: Not Observed
UTC Conversion: +5:00 = UTC
Magnetic Variation: 2.0° W

Customs: Yes
Airport Type: IFR
Landing Fee: No
Control Tower: Yes
Jet Start Unit: No
LLWS Alert: No
Beacon: No

Sunrise: 1144 Z
Sunset: 2340 Z

Runway Information

Runway: 09
Length x Width: 4921 ft x 66 ft
Surface Type: asphalt
TDZ-Elev: 4 ft
Lighting: Edge, REIL

Runway: 27
Length x Width: 4921 ft x 66 ft
Surface Type: asphalt
TDZ-Elev: 1 ft
Lighting: Edge, REIL

Communication Information

Bocas Tower: 118.400
Bocas Ground: 121.600
Panama ACC: 133.300 RCO
Panama ACC: 125.500 RCO
Panama ACC: 123.300 RCO
Panama ACC: 133.000 RCO

MPBO/BOC

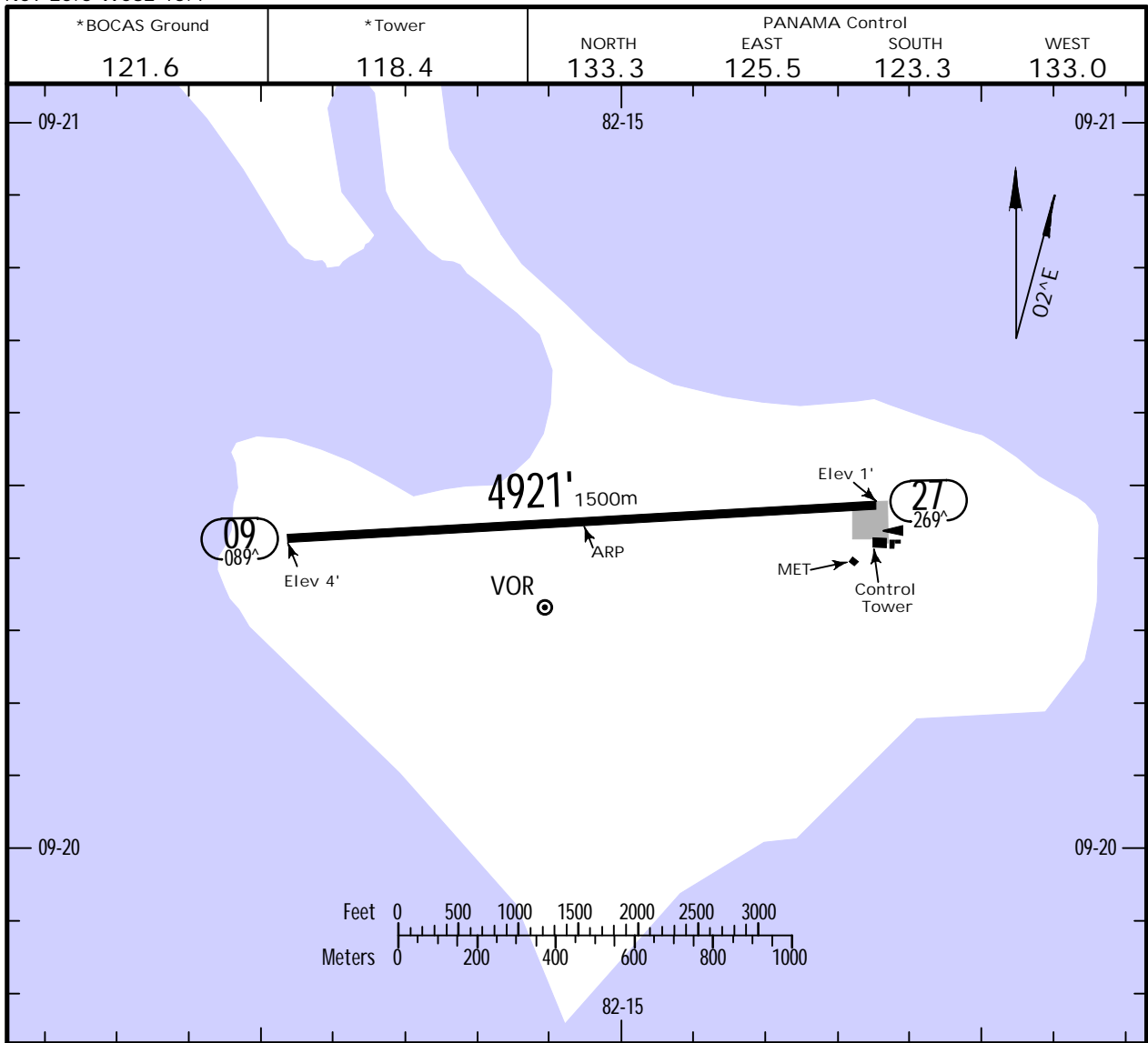
Apt Elev 5'
N09 20.5 W082 15.1



JEPPESEN BOCAS DEL TORO, PANAMA

30 OCT 20 (10-9)

JOSE EZEQUIEL HALL



ADDITIONAL RUNWAY INFORMATION

RWY	Landing	USABLE LENGTHS			WIDTH
		Threshold	Glide Slope	TAKE-OFF	
09 27	RL				66' 20m

.Std. TAKE-OFF			
RL & RCLM	RL	RL or RCLM	Adequate Vis Ref
DAY	NIGHT	DAY	DAY NIGHT
R300m		R400m	R/V500m NA

MPBO/BOC

JOSE EZEQUIEL HALL

30 OCT 20

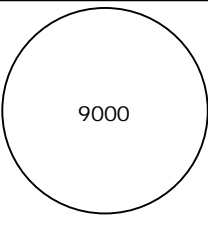
(12-1)

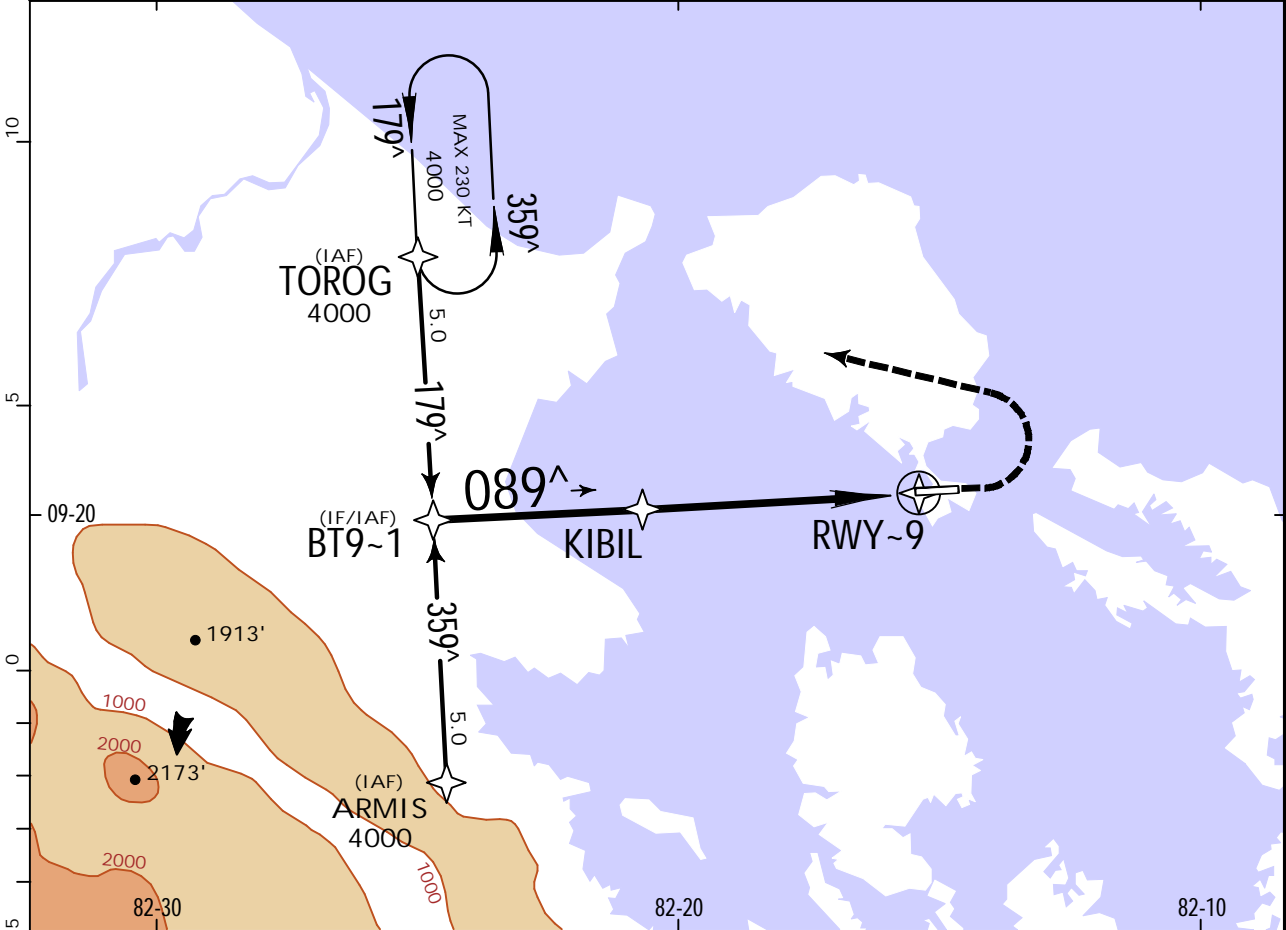
CAT A & B

JEPPESEN BOCAS DEL TORO, PANAMA

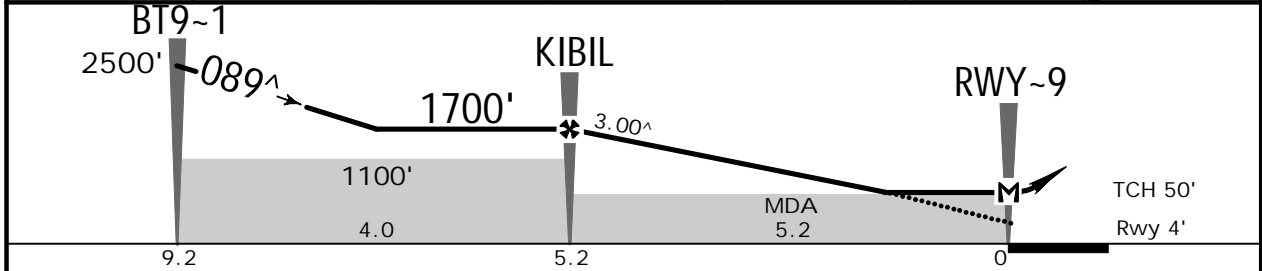
RNAV (GNSS) Rwy 09

BRIEFING STRIP™

NORTH 133.3		PANAMA Control EAST 125.5		SOUTH 123.3		WEST 133.0		*BOCAS Tower 118.4		*Ground 121.6		
RNAV		Final Apch Crs 089[^]		KIBIL 1700' (1696')		LNAV DA/MDA(H) 480' (476')		Apt Elev 5' Rwy 4'				
MISSED APCH: Reaching 700' LEFT turn direct to TOROG climbing to 4000' and hold.												
Alt Set: hPa		Rwy Elev: 0 hPa		Trans level: By ATC		Trans alt: 18000'						MSA ARP
GNSS required.												



DIST to NEXT WPT	KIBIL	4.0	3.0	2.0	1.5	RWY-9
ALTITUDE	1700'	1330'	1010'	690'	480'	



Gnd speed-Kts	60	80	100	120				
Rate of descent on final (feet/min)	320	420	540	640				
MAP at RWY-9								

.State.	STRAIGHT-IN LANDING				CIRCLE-TO-LAND			
	LNAV CDEFA 1 DA/MDA(H) 480' (476')				TOROG			

A	V2200m				NA			
B								
C	NA							
D								

1 VNAV DA(H) in lieu of MDA(H) depends on operator policy.
 CHANGES: Communications, chart format. | JEPPESEN, 2017, 2020. ALL RIGHTS RESERVED.

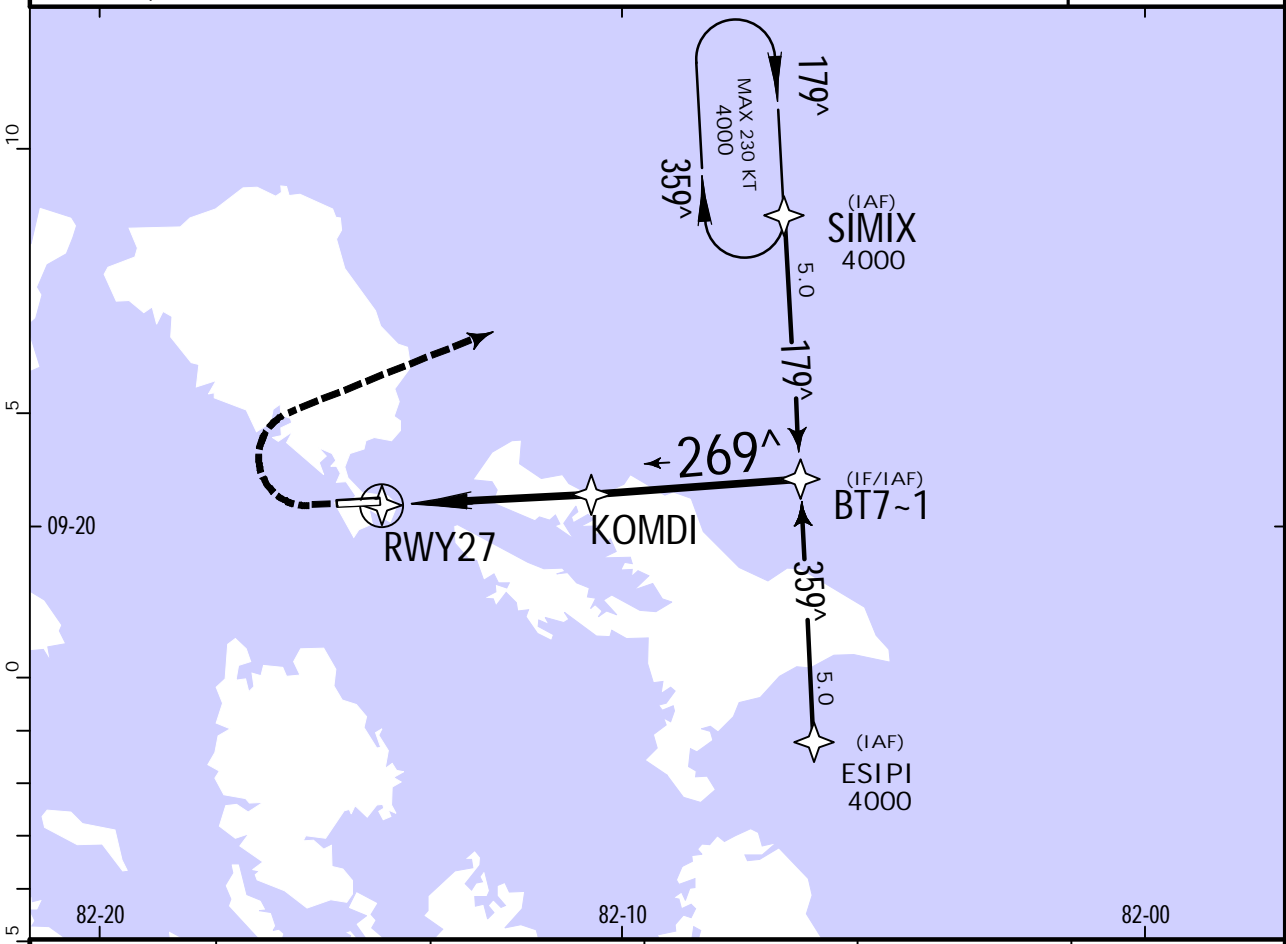
MPBO/BOC

JOSE EZEQUIEL HALL

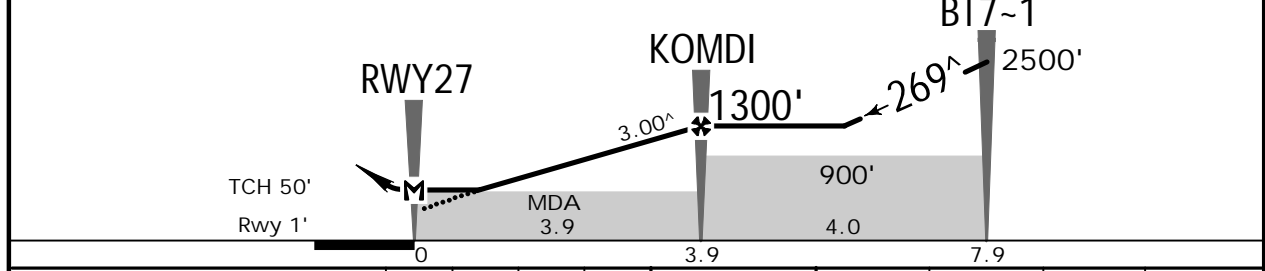
JEPPESEN BOCAS DEL TORO, PANAMA

30 OCT 20 (12-2) CAT A & B RNAV (GNSS) Rwy 27

BRIEFING STRIP™	PANAMA Control				*BOCAS Tower	*Ground
	NORTH 133.3	EAST 125.5	SOUTH 123.3	WEST 133.3	118.4	121.6
	RNAV	Final Apch Crs 269[^]	KOMDI 1300' (1299')	LNAV DA/MDA(H) 550' (549')	Apt Elev 5' Rwy 1'	9000
	MISSED APCH: Reaching 700' RIGHT turn direct to SIMIX climbing to 4000' and hold.					
	Alt Set: hPa	Rwy Elev: 0 hPa	Trans level: By ATC	Trans alt: 18000'		
GNSS required.					MSA ARP	



DIST to NEXT WPT	RWY27	1.7	2.0	3.0	KOMDI
ALTITUDE		550'	690'	1010'	1300'



Gnd speed-Kts	60	80	100	120	700'	4000'	D →	SIMIX
Rate of descent on final (feet/min)	320	440	540	640				
MAP at RWY27								

.State.	STRAIGHT-IN LANDING				CIRCLE-TO-LAND				
	LNAV CDFA 1 DA/MDA(H) 550' (549')								
	A	V2500m				NA			
	B								
C	NA								
D									

1 VNAV DA(H) in lieu of MDA(H) depends on operator policy.
 CHANGES: Communications, chart format. | JEPPESEN, 2017, 2020. ALL RIGHTS RESERVED.

Chart changes since cycle 01-2021

ADD = added chart, REV = revised chart, DEL = deleted chart.

ACT	PROCEDURE IDENT	INDEX	REV DATE	EFF DATE
-----	-----------------	-------	----------	----------

BOCAS DEL TORO, (JOSE EZEQUIEL HALL - MPBO)

TERMINAL CHART CHANGE NOTICES

No Chart Change Notices for Airport MPBO