

List of pages in this Trip Kit

Trip Kit Index

Airport Information For CYRV

Terminal Charts For CYRV

Revision Letter For Cycle 20-2018

Change Notices

Notebook

General Information

Location: REVELSTOKE BC CAN
ICAO/IATA: CYRV / YRV
Lat/Long: N50° 57.74', W118° 11.06'
Elevation: 1457 ft

Airport Use: Public
Daylight Savings: Observed
UTC Conversion: +8:00 = UTC
Magnetic Variation: 16.0° E

Fuel Types: 80-87 Octane, 100-130 Octane, Jet B
Customs: No
Airport Type: IFR
Landing Fee: No
Control Tower: No
Jet Start Unit: No
LLWS Alert: No
Beacon: No

Sunrise: 1526 Z
Sunset: 2354 Z

Runway Information

Runway: 12
Length x Width: 5155 ft x 75 ft
Surface Type: asphalt
TDZ-Elev: 1454 ft

Runway: 30
Length x Width: 5155 ft x 75 ft
Surface Type: asphalt
TDZ-Elev: 1457 ft
Displaced Threshold: 654 ft

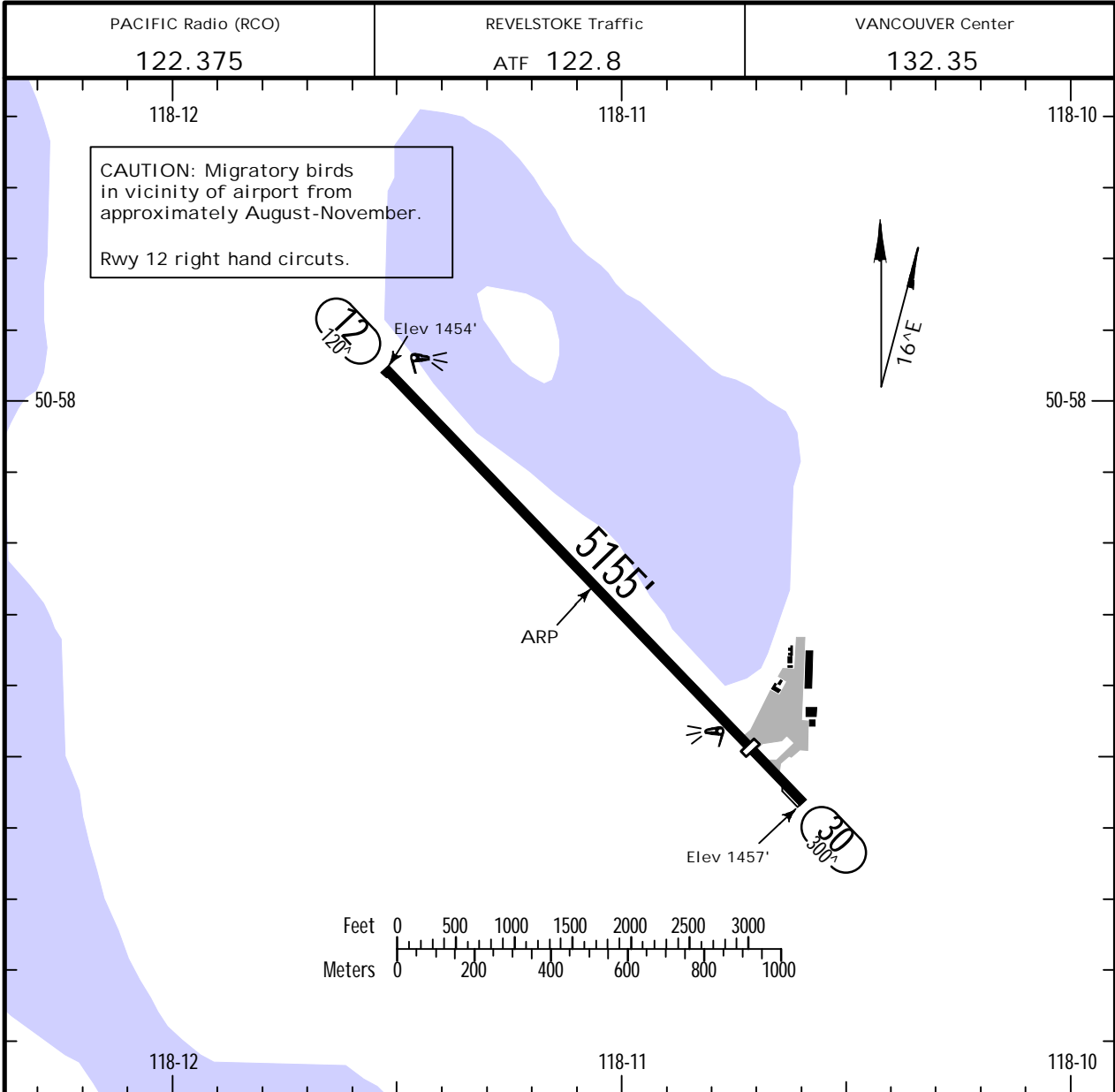
Communication Information

Pacific Radio Radio: 122.375 Flight Info Service RCO
Revelstoke Traffic MULTICOM: 122.800 At or below 4500 ft Out to 5 mi. ATF
Vancouver Centre ACC: 132.350 Remote Communications Air-Ground
Pacific Radio Radio: 126.700 RCO

CYRV/YRV
 Apt Elev **1457'**
 N50 57.7 W118 11.1

JEPPESEN
 18 MAY 18 **(12-1)** .Eff.24.May.

REVELSTOKE, BC
 REVELSTOKE



ADDITIONAL RUNWAY INFORMATION

RWY	USABLE LENGTHS		TAKE-OFF	WIDTH
	Threshold	Glide Slope		
12 1 30	4501'			76'

1 Limited winter maintenance.

TAKE-OFF & DEPARTURE PROCEDURE

All Rwys

A
B
C
D

Pilots are responsible for determining minimum climb gradient and/or routing for obstacle and terrain avoidance. Pilots may depart IFR by using a take-off visibility that will allow avoidance of obstacles on departure in no case less than 1/2 mile.

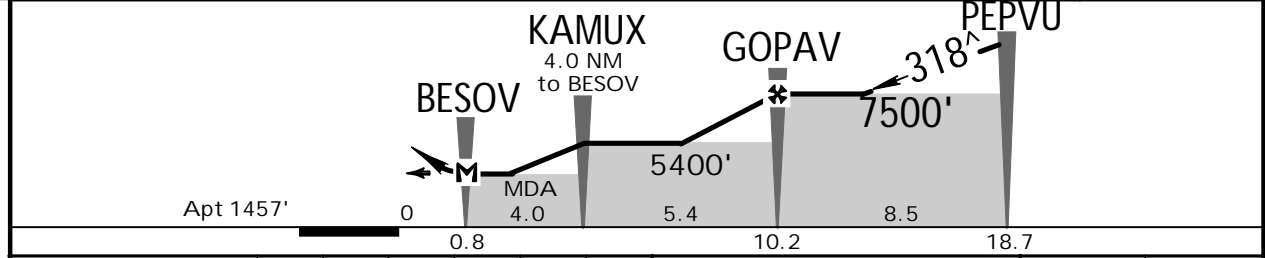
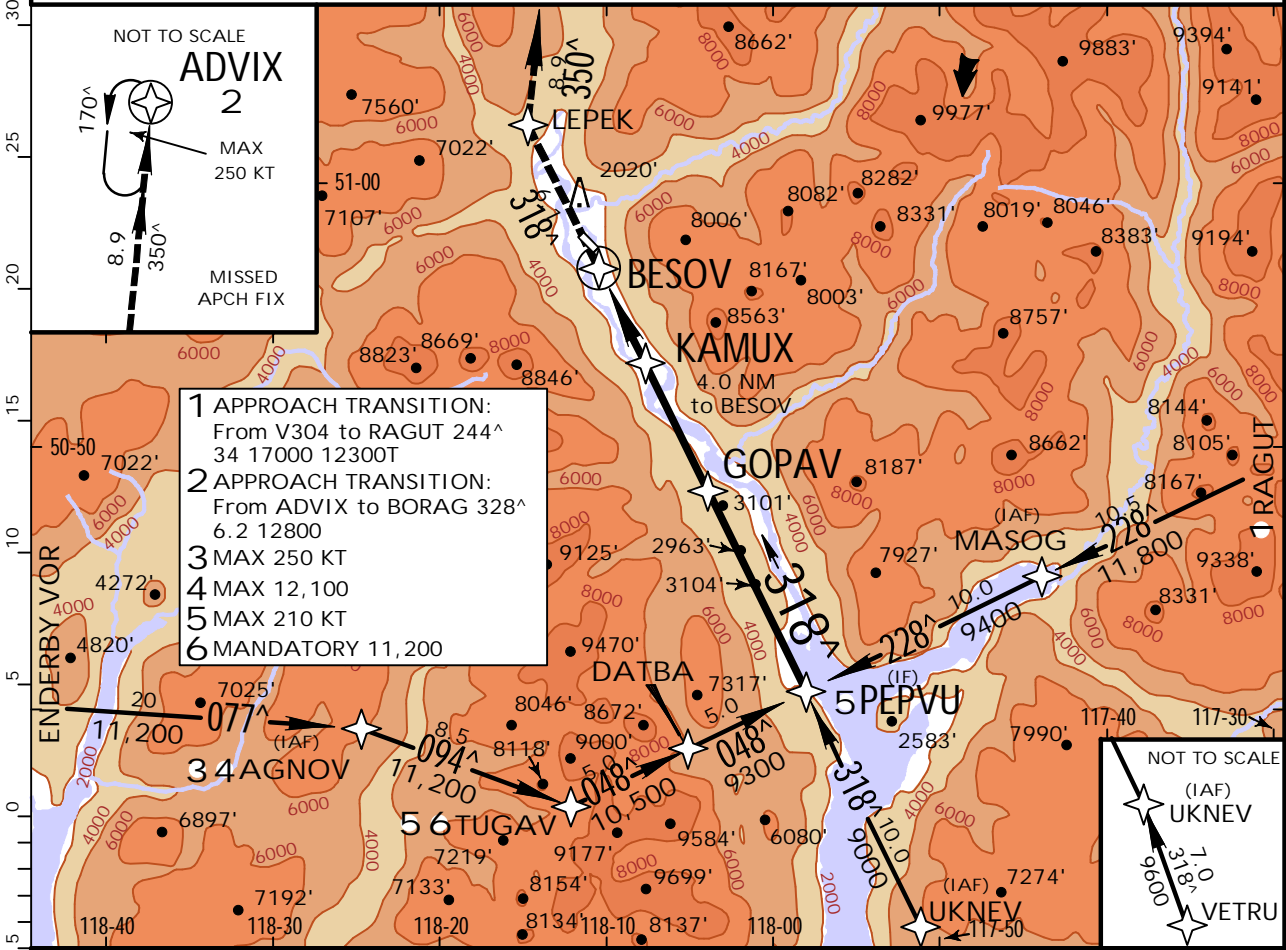
CYRV/YRV REVELSTOKE

JEPPESEN
18 MAY 18 **12-1** .Eff.24.May.

REVELSTOKE, BC RNAV (GNSS) A

VANCOUVER Center 132.35		PACIFIC Radio (RCO) 122.375		REVELSTOKE Traffic ATF 122.8	
RNAV	Final Apch Crs 318[^]	SMA GOPAV 7500' (6043')	MDA(H) Refer to Minimums	Apt Elev 1457'	
MISSED APCH: Climb track 318[^] to LEPEK. Then climbing RIGHT turn to 11,500' track 350[^] to ADVIX. As required shuttle climb. Do not exceed 250 KT until LEPEK. Requires a minimum climb gradient of 420'/NM to 7,700'.					11,600 MSA BESOV within 30 NM
		Gnd speed-Kts	90	120	
		420'/NM	630	840	980
			1120	1260	1400
			1750		

Alt Set: INCHES Trans level: FL 180 Trans alt: 18000'
 1. Restricted Instrument Procedure. 2. SAFE ALTITUDE WITHIN 100 NM 14,300'. 3. Apply altitude correction for cold temperatures. 4. Narrow valley approach. Mountainous terrain all quadrants. 5. Aerodrome visual surfaces not assessed. 6. The acft weight shall not be greater than that necessary to meet the published climb gradient on the missed approach. 7. When computing the acft weight, corrections shall be made for the pressure altitude, ambient temperature, wind components and any gradient loss associated with a turn at the planned time of approach. 8. Crews must be familiar with aerodrome environment.



					LEPEK	318 [^]
MAP at BESOV						

CIRCLE-TO-LAND		NO CIRCLING
Max Kts	MDA(H)	
A 90	3900' (2443') -3	
B 120		
C 140		
D 165		

Chart changes since cycle 19-2018

ADD = added chart, REV = revised chart, DEL = deleted chart.

ACT	PROCEDURE IDENT	INDEX	REV DATE	EFF DATE
-----	-----------------	-------	----------	----------

REVELSTOKE, BC (REVELSTOKE - CYRV)

TERMINAL CHART CHANGE NOTICES

No Chart Change Notices for Airport CYRV

Chart Change Notices for Country CAN

Type: Gen Tmnl
Effectivity: Permanent
Begin Date: 20151015
End Date: No end date

(CYLA) (16-1) (16-2); (CYLU) (16-1). NDB unmonitored and limited hours.

Type: Gen Tmnl
Effectivity: Temporary
Begin Date: 20161202
End Date: Until Further Notice

(CYLT) (32-1), (36-1); (CYWE) (12-1), (12-2); Transition level/altitude should read: Standard Pressure Region.

Type: Gen Tmnl
Effectivity: Permanent
Begin Date: Immediately
End Date: No end date

At locations with approach charts depicting the Plan View Ball Flag Note: "Minimum VDA intercept [altitude]" or "Recommended VDA intercept [altitude]", it should read "VDA intercept based on [altitude]".

Type: Gen Tmnl
Effectivity: Permanent
Begin Date: 20060413
End Date: No end date

All (GPS) approach procedure titles changed to (GNSS).

Type: Gen Tmnl
Effectivity: Permanent
Begin Date: 20161202
End Date: No end date

(CYAH); (CYDL). AWOS replaced with METAR AUTO.

Type: Gen Tmnl
Effectivity: Permanent
Begin Date: 20180328
End Date: No end date

(CZML); (CYBX); (CYCZ) (19-1). LWIS replaced with AUTO (PVT WX).

SUDU..PONPA..PTA..GBE..DIL..VIE..SAVT