

## List of pages in this Trip Kit

Trip Kit Index

Airport Information For CYGV

Terminal Charts For CYGV

Revision Letter For Cycle 14-2020

Change Notices

Notebook

## General Information

Location: HAVRE ST-PIERRE QC CAN

ICAO/IATA: CYGV / YGV

Lat/Long: N50° 16.9', W063° 36.7'

Elevation: 125 ft

Airport Use: Public

Daylight Savings: Observed

UTC Conversion: +5:00 = UTC

Magnetic Variation: 20.0° W

Fuel Types: 100 Octane (LL), Jet A-1

Repair Types: Minor Airframe, Minor Engine

Customs: No

Airport Type: IFR

Landing Fee: Yes

Control Tower: No

Jet Start Unit: Yes

LLWS Alert: No

Beacon: Yes

Traffic Pattern Altitude: 1500 ft (1375 ft AGL)

Sunrise: 1214 Z

Sunset: 2023 Z

## Runway Information

Runway: 08

Length x Width: 4498 ft x 100 ft

Surface Type: asphalt

TDZ-Elev: 114 ft

Lighting: Edge, ALS, Pilot controlled

Runway: 26

Length x Width: 4498 ft x 100 ft

Surface Type: asphalt

TDZ-Elev: 125 ft

Lighting: Edge, REIL, Pilot controlled

## Communication Information

AWOS: 128.300 Non-English

AWOS: 125.950

Madeleine Radio Radio: 122.000 At or below 3200 ft Out to 15 mi. MF PCL

Havre St-Pierre Traffic MULTICOM: 122.000 At or below 3200 ft Out to 15 mi. MF

**CYGV/YGV**

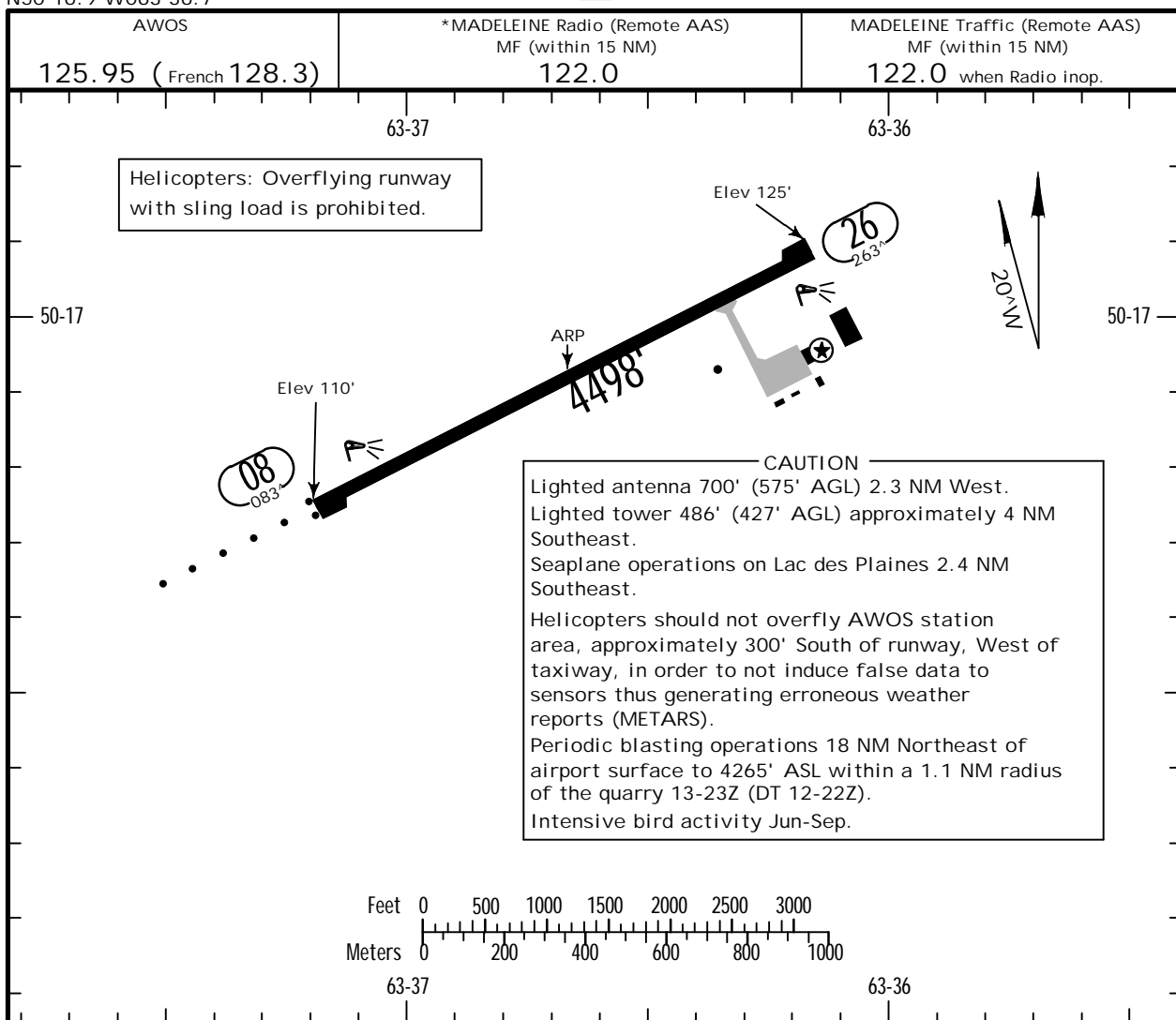
Apt Elev **125'**  
N50 16.9 W063 36.7

**JEPPesen**

10 JUL 20 **(10-9)** .Eff. 16.Jul.

**HAVRE ST-PIERRE, QUE**

HAVRE ST-PIERRE



ADDITIONAL RUNWAY INFORMATION

RWY				USABLE LENGTHS			
	Threshold	Landing Beyond	Glide Slope	TAKE-OFF	WIDTH		
08	1 MIRL	1 ODALS (non-std 1400')	1 2 PAPI-L				100'
26	1 MIRL	1 REIL	1 2 PAPI-L				

- 1 Activate on 122.0.
- 2 Angle 3.0°. For aircraft with eye-to-wheel height up to 10'.

TAKE-OFF & DEPARTURE PROCEDURE

1 Rwy 08		2 Rwy 26	
3 2300-1300Z	4 1300-2300Z	5	
Do not climb between heading 318° counter-clockwise to 285° below 4400'.	Climbing RIGHT turn direct to YGV NDB. Shuttle climb to 5100' before proceeding on course inbound track 293° of YGV NDB, max 250 KT, all turns LEFT.	Requires a minimum climb gradient of 350'/NM to 900' on heading of 263° to 3300' before proceeding on course.	Climb visual over airport to 3400' before proceeding on course.
A			1
B			1 1/2
C	1/2	1/2	2
D			

- 1 Trees to 185' MSL approximately 500' from departure end of rwy, 350' both left and right of rwy centerline.
- 2 Trees to 149' MSL abeam departure end of rwy, 400' both left and right of rwy centerline.
- 3 Daylight saving time 2200-1200Z.
- 4 Daylight saving time 1200-2200Z.

5 DEPARTURE CLIMB RATE V/V (FPM)

GROUND SPEED	90	120	140	160	180	200	250	300
350 FT/NM	530	700	820	940	1050	1170	1460	1750

# CYGV/YGV

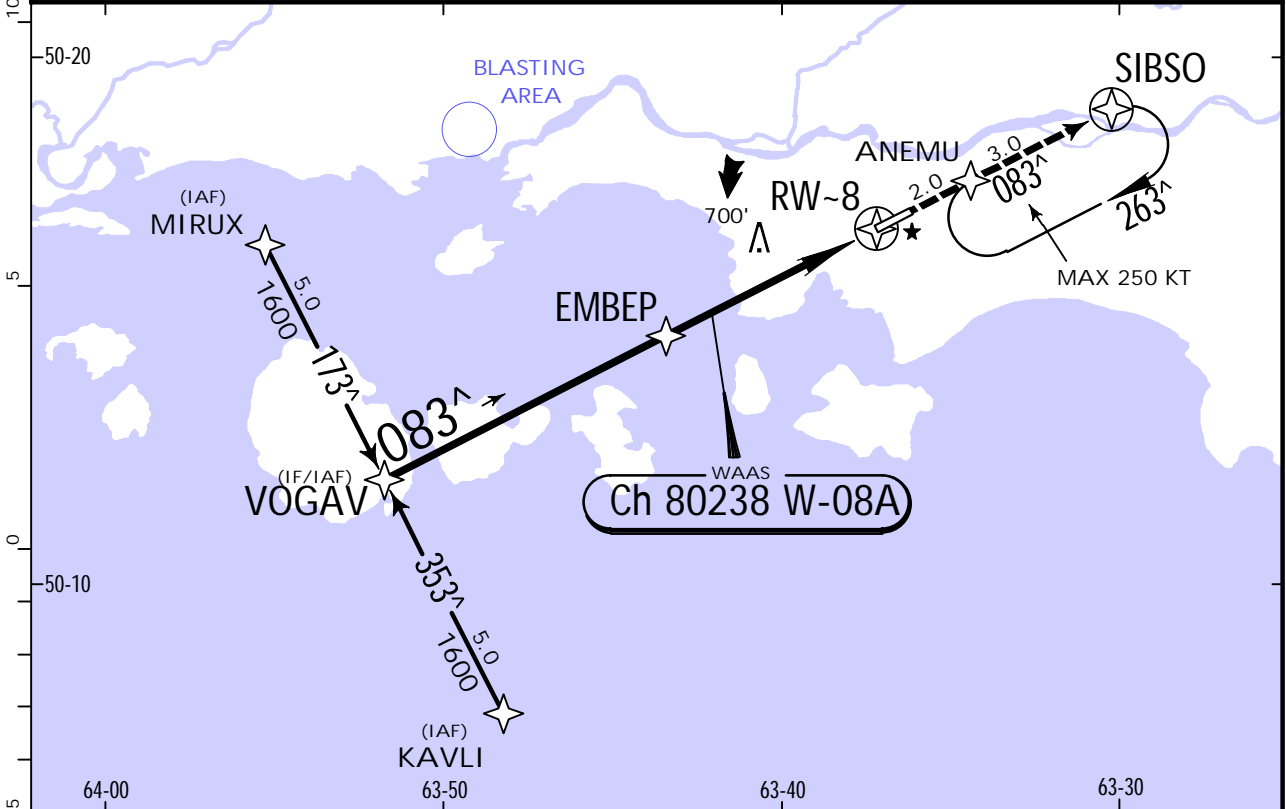
## HAVRE ST-PIERRE



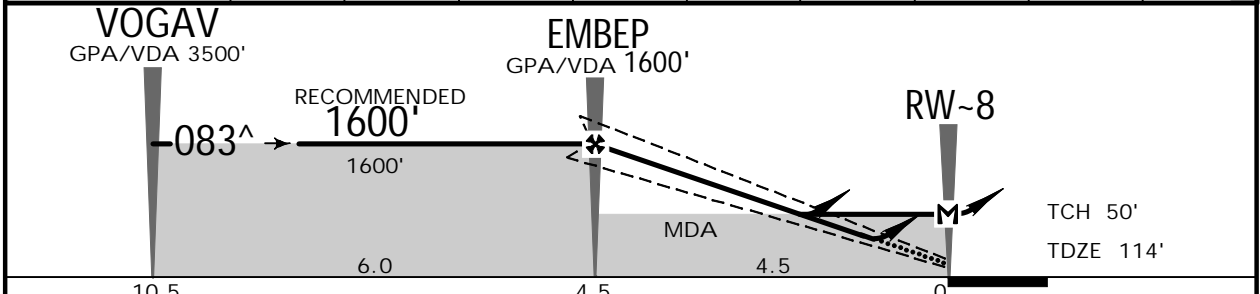
# HAVRE ST-PIERRE, QUE

## RNAV (GNSS) Rwy 08

AWOS 125.95 (French 128.3)		*MADELEINE Radio (Remote AAS) MF (within 15 NM) 122.0		MADELEINE Traffic (Remote AAS) MF (within 15 NM) 122.0 when Radio inop.	
WAAS <b>Ch 80238</b> W-08A	Final Apch Crs <b>083<sup>^</sup></b>	GPA <b>EMBEP</b> 1600' (1486')	LPV DA(H) <b>370'</b> (256')	Apt Elev 125' TDZE 114'	3200  MSA RW-8
MISSED APCH: Climb to 1700' track 083 <sup>^</sup> via ANEMU to SIBSO. As required shuttle climb.					
Alt Set: INCHES Trans level: FL 180 Trans alt: 18000'					
1. SAFE ALTITUDE WITHIN 100 NM 5100'. 2. For uncompensated Baro-VNAV systems, LNAV/VNAV not authorized below -30°C (-22°F). 3. Possibility of high intensity helicopter activities between airport and East sector along Romaine River 1000' or below, sunrise to sunset. 4. Pilot controlled lighting 122.0.					



NM to RW-8	10.5	10.0	9.0	8.0	7.0	6.0	4.5	4.0	2.7
VDA ALTITUDE	3500'	3340'	3030'	2710'	2390'	2070'	1600'	1430'	1020'



Gnd speed-Kts	70	90	100	120	140	160	ODALS PAPI	1700'	083 <sup>^</sup> via ANEMU	
GPA/VDA	3.00 <sup>^</sup>	372	478	531	637	743				849
LPV, LNAV/VNAV: MAP at DA										
LNAV: MAP at RW-8										

STRAIGHT-IN LANDING RWY 08		
LPV DA(H) <b>370'</b> (256')	LNAV/VNAV DA(H) <b>1240'</b> (1126')	LNAV MDA(H) <b>1020'</b> (906')
ALS out	ALS out	ALS out
A		
B		
C	1	2 <sup>3</sup> / <sub>4</sub>
D		

# CYGV/YGV

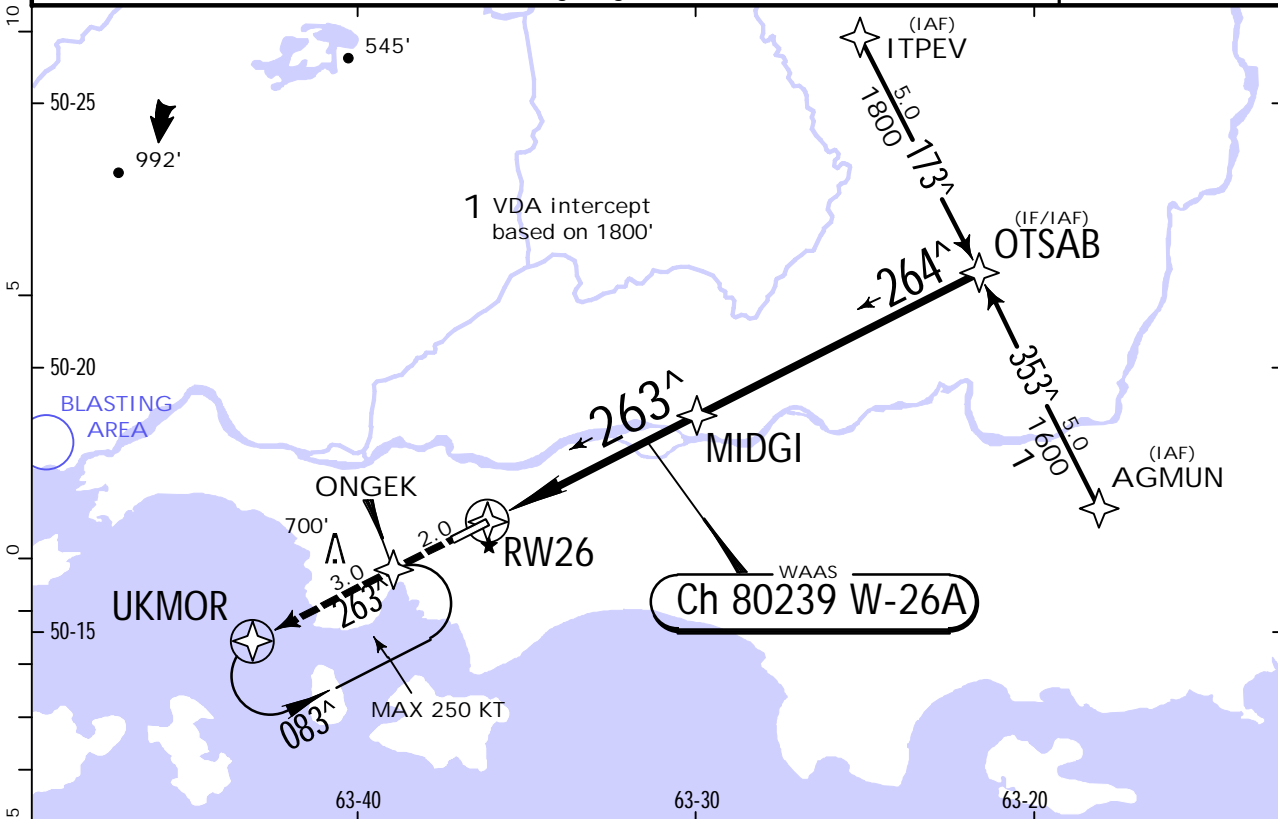
## HAVRE ST-PIERRE

**JEPPESSEN**  
13 DEC 19 **(12-2)**

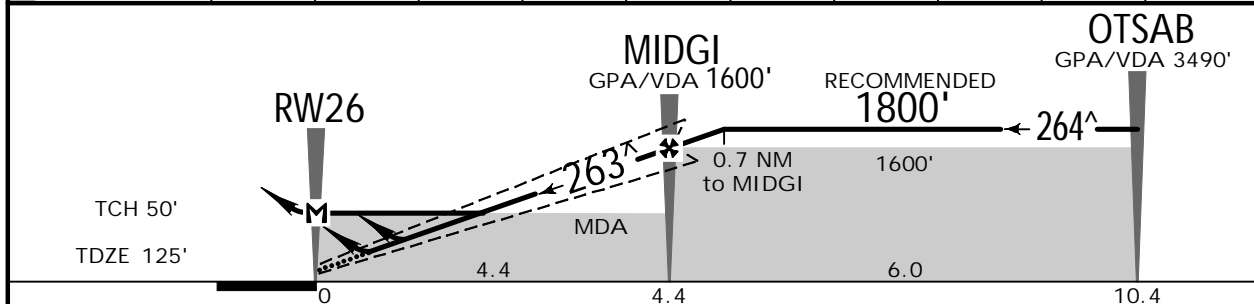
# HAVRE ST-PIERRE, QUE

## RNAV (GNSS) Rwy 26

AWOS 125.95 (French 128.3)		*MADELEINE Radio (Remote AAS) MF (within 15 NM) 122.0		MADELEINE Traffic (Remote AAS) MF (within 15 NM) 122.0 when Radio inop.	
WAAS <b>Ch 80239</b> W-26A	Final Apch Crs <b>263<sup>^</sup></b>	GPA MIDGI <b>1600'</b> (1475')	LPV DA(H) <b>390'</b> (265')	Apt Elev 125' TDZE 125'	3200  MSA RW26
MISSED APCH: Climb to 1700' track 263 <sup>^</sup> via ONGEK to UKMOR. As required shuttle climb.					
Alt Set: INCHES		Trans level: FL 180		Trans alt: 18000'	
1. SAFE ALTITUDE WITHIN 100 NM 5100'. 2. For uncompensated Baro-VNAV systems, LNAV/VNAV not authorized below -30°C (-22°F). 3. Possibility of high intensity helicopter activities between airport and East sector along Romaine River 1000' or below, sunrise to sunset. 4. Pilot controlled lighting 122.0.					



NM to RW26	1.2	2.0	3.0	4.0	5.1	6.0	7.0	8.0	9.0	10.4
VDA ALTITUDE	560'	810'	1130'	1450'	1800'	2080'	2400'	2720'	3040'	3490'



Gnd speed-Kts	70	90	100	120	140	160	REIL PAPI-L	1700' ↑	263 <sup>^</sup> via ONGEK
GPA/VDA	3.00 <sup>^</sup>	372	478	531	637	849			
LPV, LNAV/VNAV: MAP at DA									
LNAV: MAP at RW26									

STRAIGHT-IN LANDING RWY 26		
LPV DA(H) <b>390'</b> (265')	LNAV/VNAV DA(H) <b>460'</b> (335')	LNAV MDA(H) <b>560'</b> (435')
A		
B		
C	1	1½
D		

# CYGV/YGV

HAVRE ST-PIERRE

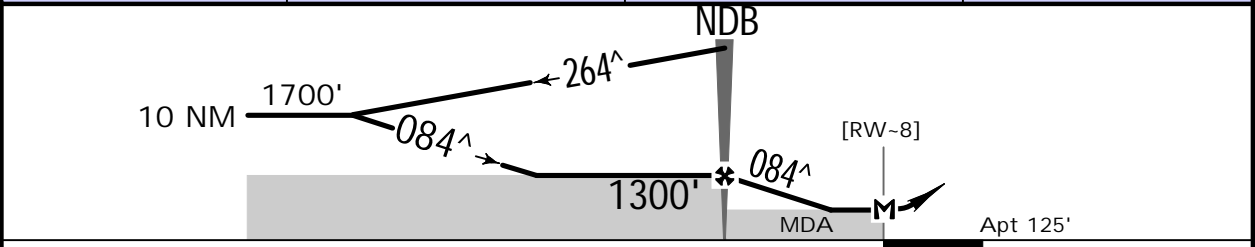
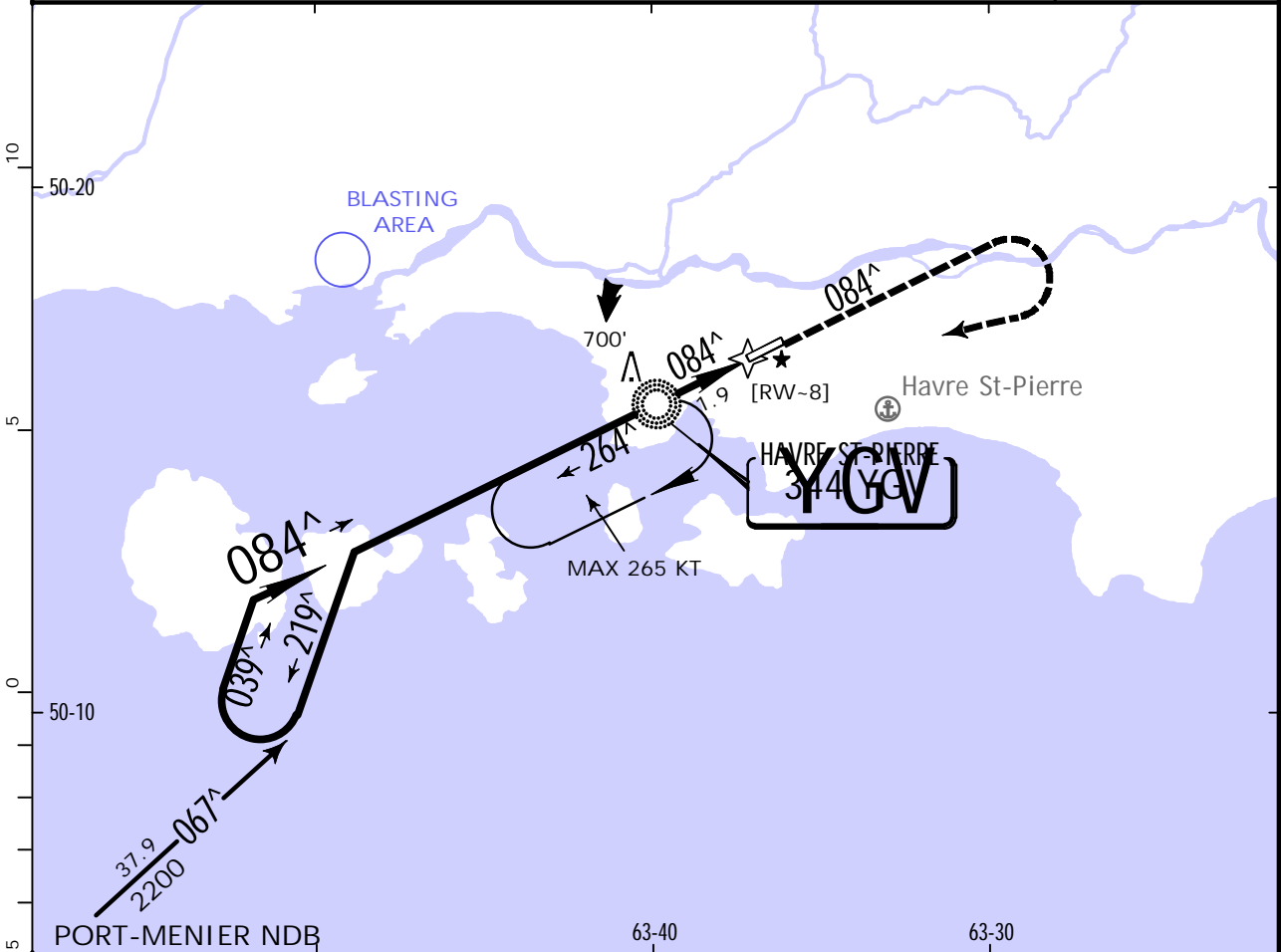


22 FEB 19 **16-1** .Eff.28.Feb.

# HAVRE ST-PIERRE, QUEBEC

NDB A

AWOS 125.95 (French 128.3)		*MADELEINE Radio (Remote AAS) MF (within 15 NM) 122.0		MADELEINE Traffic (Remote AAS) MF (within 15 NM) 122.0 when Radio inop.		No Control. Broadcast intentions on 123.5 within 15 minutes of ETA and prior to descent, then on MF 5 minutes prior to commencing approach.	
NDB YGV <b>344</b>	Final Apch Crs <b>084^</b>	SMA NDB <b>1300'</b> (1175')	MDA(H) Refer to Minimums	Apt Elev 125'		<p>MSA YGV NDB</p>	
MISSED APCH: Climb to 1700' track 084^ . Then RIGHT turn direct to YGV NDB.							
Alt Set: INCHES		Trans level: FL 180		Trans alt: 18000'			
1. SAFE ALTITUDE WITHIN 100 NM 5100' . 2. Possibility of high intensity helicopter activities between airport and East sector along Romaine River 1000' or below, sunrise to sunset. 3. Pilot controlled lighting 122.0.							



Gnd speed-Kts	70	90	100	120	140	160	Lighting - Refer to Airport Chart	1700' on 084^	RT	YGV 344
NDB to MAP	1.9	1:38	1:16	1:08	0:57	0:49				

		CIRCLE-TO-LAND		
		MDA(H)		
A	90	640' (515') -1½		
B	120	640' (515') -2		
C	140	640' (515') -2		
D	165	1 820' (695') -2		

**Chart changes since cycle 13-2020**

ADD = added chart, REV = revised chart, DEL = deleted chart.

ACT	PROCEDURE IDENT	INDEX	REV DATE	EFF DATE
<b>HAVRE ST-PIERRE, QC (HAVRE ST-PIERRE - CYGV)</b>				
REV	AIRPORT, AIRPORT INFO, TA...	10-9	10 Jul 2020	16 Jul 2020

## TERMINAL CHART CHANGE NOTICES

### No Chart Change Notices for Airport CYGV

### Chart Change Notices for Country CAN

**Type:** Gen Tmnl

**Effectivity:** Permanent

**Begin Date:** 20180328

**End Date:** No end date

(CZML); (CYCZ) (19-1). LWIS replaced with AUTO (PVT WX).

**Type:** Gen Tmnl

**Effectivity:** Permanent

**Begin Date:** Immediately

**End Date:** No end date

At locations with approach charts depicting the Plan View Ball Flag Note: "Minimum VDA intercept [altitude]" or "Recommended VDA intercept [altitude]", it should read "VDA intercept based on [altitude]".