

## List of pages in this Trip Kit

Trip Kit Index

Airport Information For SVMG

Terminal Charts For SVMG

Revision Letter For Cycle 11-2020

Change Notices

Notebook

## General Information

Location: MARGARITA VEN  
ICAO/IATA: SVMG / PMV  
Lat/Long: N10° 54.75', W063° 57.98'  
Elevation: 74 ft

Airport Use: Public  
Daylight Savings: Not Observed  
UTC Conversion: +4:00 = UTC  
Magnetic Variation: 14.0° W

Fuel Types: 100-130 Octane, Jet A-1  
Customs: Yes  
Airport Type: IFR  
Landing Fee: No  
Control Tower: Yes  
Jet Start Unit: No  
LLWS Alert: No  
Beacon: Yes

Sunrise: 1038 Z  
Sunset: 2211 Z

## Runway Information

Runway: 09  
Length x Width: 9843 ft x 148 ft  
Surface Type: asphalt  
TDZ-Elev: 74 ft  
Lighting: Edge, ALS

Runway: 27  
Length x Width: 9843 ft x 148 ft  
Surface Type: asphalt  
TDZ-Elev: 29 ft  
Lighting: Edge

## Communication Information

ATIS: 132.650  
Margarita Tower: 118.600  
Margarita Tower: 123.500  
Margarita Ground: 121.900  
Margarita Approach: 119.900  
Margarita Approach: 120.500

# SVMG/PMV

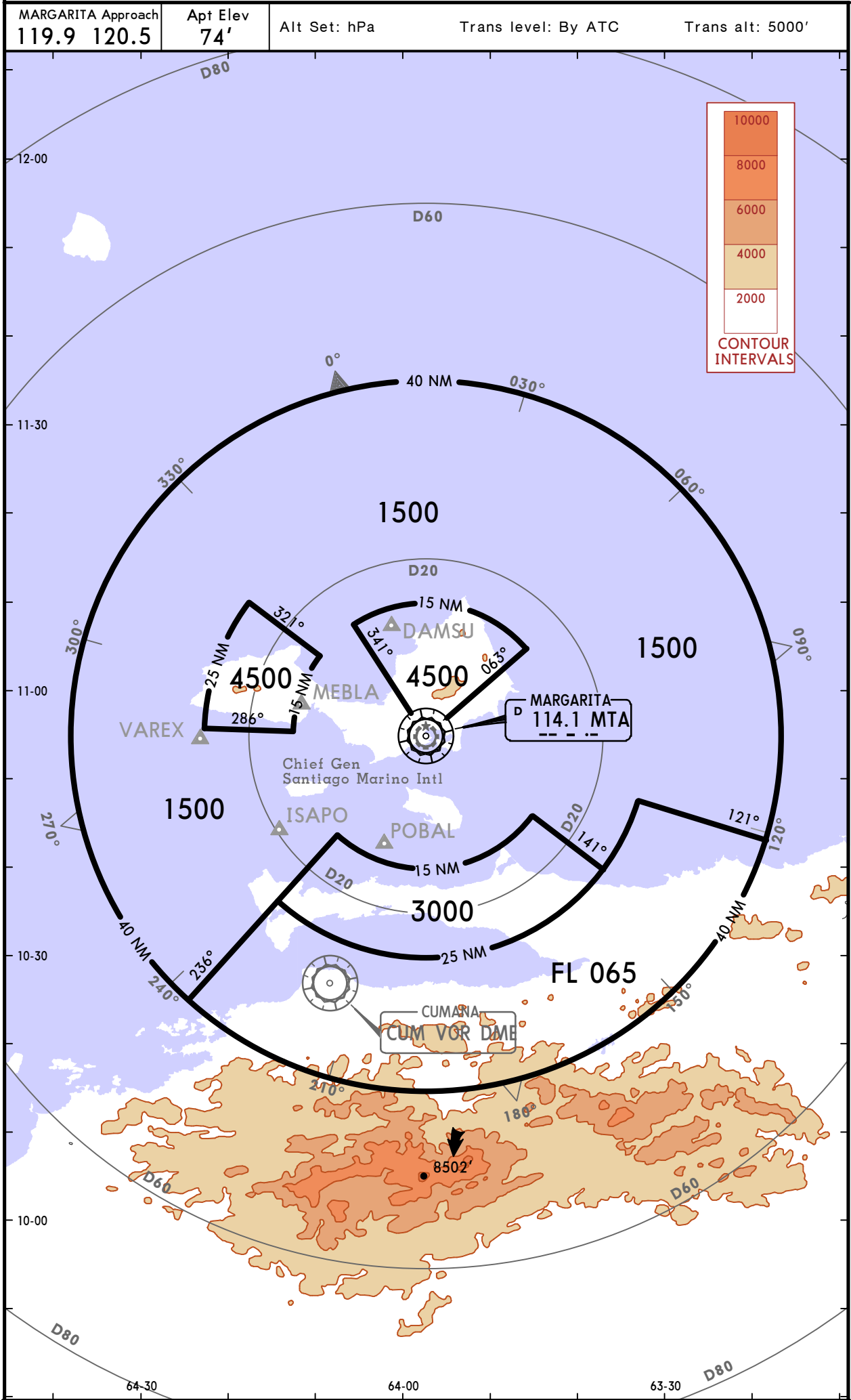
CHIEF GEN  
SANTIAGO MARINO INTL

**JEPESEN**  
21 APR 17  
Eff 27 Apr

10-1R

# MARGARITA, VENEZUELA

**RADAR MINIMUM ALTITUDES**



**SVMG/PMV**  
**CHIEF GEN**  
**SANTIAGO MARINO INTL**

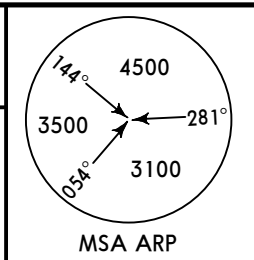
**JEPPESSEN MARGARITA, VENEZUELA**  
 29 NOV 19 **10-2** **Eff 5 Dec**

**RNAV STAR**

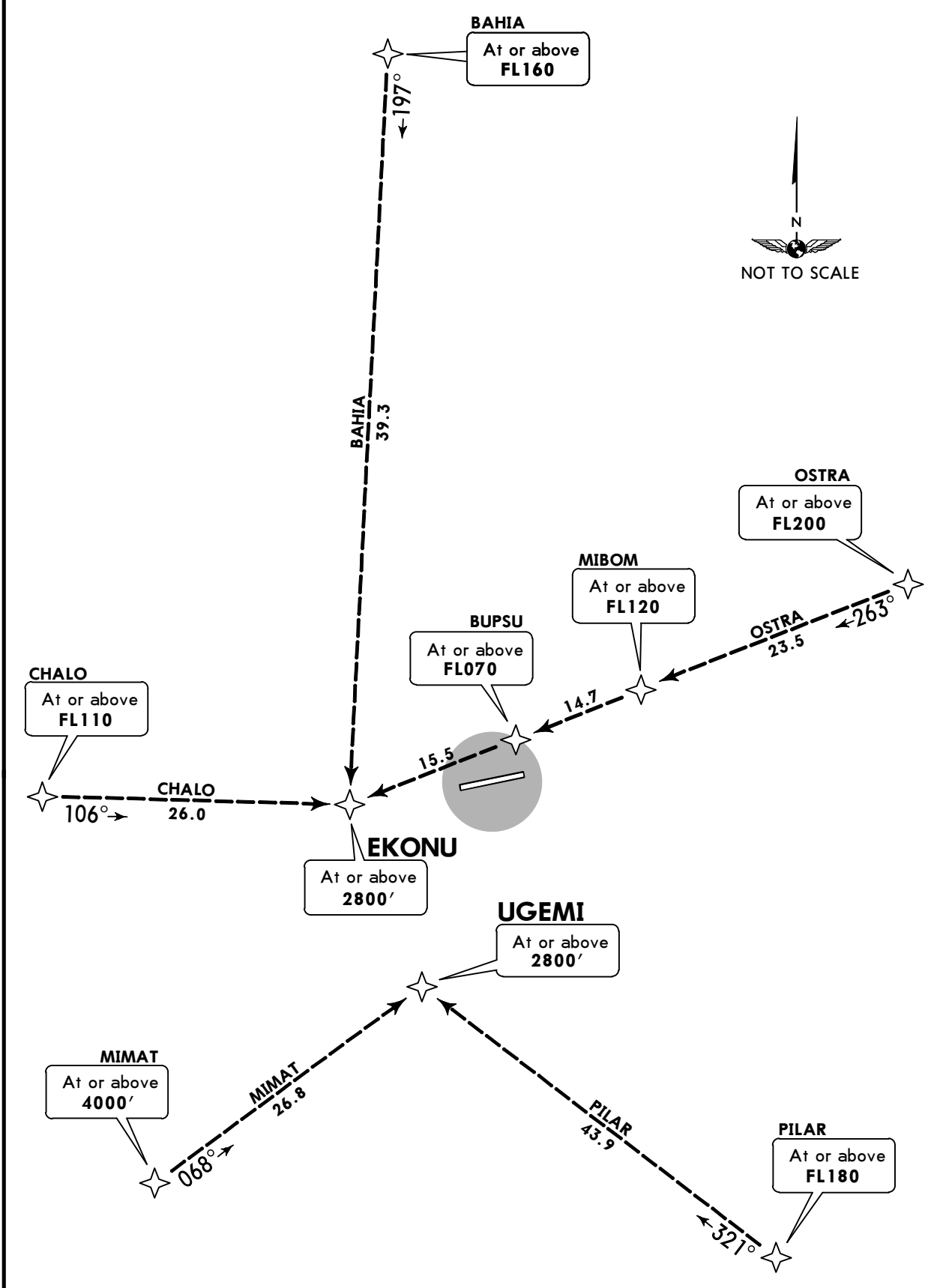
ATIS  
**132.65**

Apt Elev  
**74'**

Alt Set: hPa  
 Trans level: By ATC Trans alt: 5000'  
**RNAV (RNP 1) certification required.**



**EKONU [EKONU]**  
**UGEMI [UGEMI]**  
**RNAV ARRIVALS**  
**(RWY 09)**



CHANGES: New procedures at this airport.

**SVMG/PMV**

CHIEF GEN

SANTIAGO MARINO INTL

29 NOV 19

10-3

Eff 5 Dec

**RNAV SID**

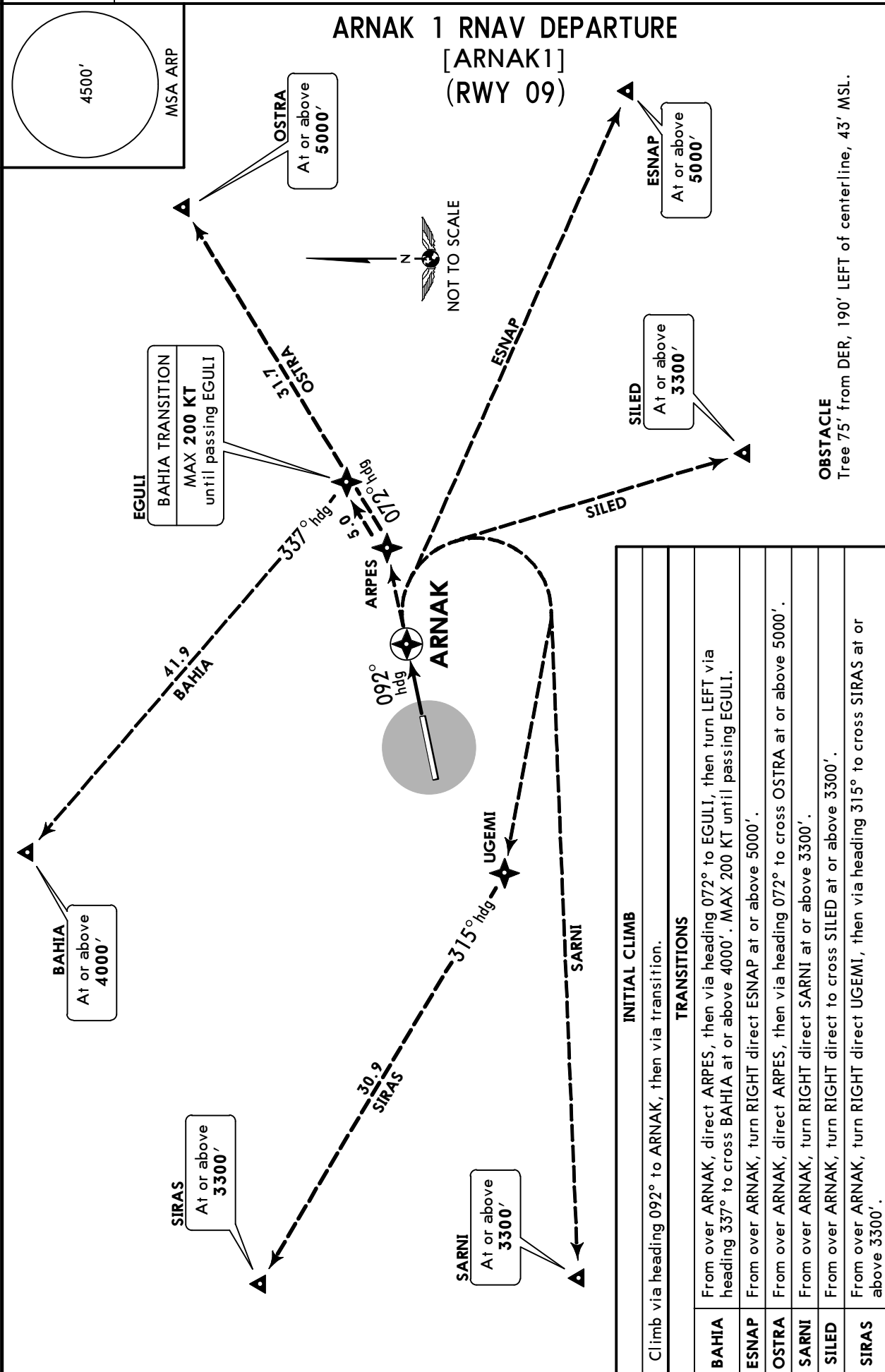
**JEPPESEN MARGARITA, VENEZUELA**

Apt Elev  
**74'**

Trans level: By ATC Trans alt: 5000'  
GPS required.

**ARNAK 1 RNAV DEPARTURE**

[ARNAK1]  
(RWY 09)



INITIAL CLIMB	
Climb via heading 092° to ARNAK, then via transition.	
TRANSITIONS	
<b>BAHIA</b>	From over ARNAK, direct ARPES, then via heading 072° to EGULI, then turn LEFT via heading 337° to cross BAHIA at or above 4000'. MAX 200 KT until passing EGULI.
<b>ESNAP</b>	From over ARNAK, turn RIGHT direct ESNAP at or above 5000'.
<b>OSTRA</b>	From over ARNAK, direct ARPES, then via heading 072° to cross OSTRAS at or above 5000'.
<b>SARNI</b>	From over ARNAK, turn RIGHT direct SARNI at or above 3300'.
<b>SILED</b>	From over ARNAK, turn RIGHT direct to cross SILED at or above 3300'.
<b>SIRAS</b>	From over ARNAK, turn RIGHT direct UGEMI, then via heading 315° to cross SIRAS at or above 3300'.



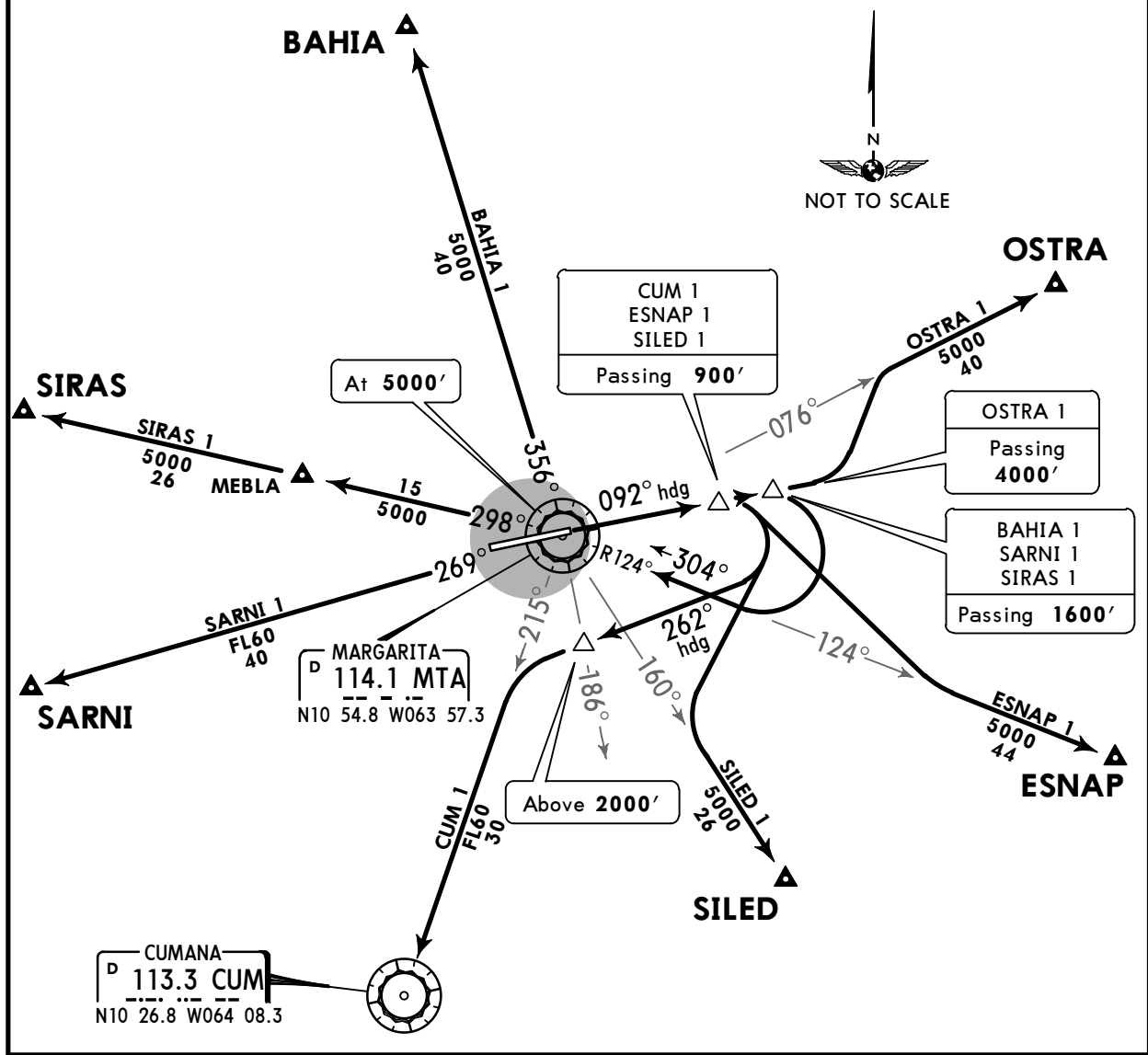
**SVMG/PMV**  
**CHIEF GEN**  
**SANTIAGO MARINO INTL**



**JEPPESEN MARGARITA, VENEZUELA**  
 29 NOV 19 (10-3A1) Eff 5 Dec **SID**

Apt Elev 74'	Trans level: By ATC Trans alt: 5000'	<p>MSA MTA VOR</p>
-----------------	--------------------------------------	--------------------

**BAHIA 1 [BAHIA1], CUM 1 [CUM1]**  
**ESNAP 1 [ESNAP1], OSTRA 1 [OSTRA1]**  
**SARNI 1 [SARNI1], SILED 1 [SILED1]**  
**SIRAS 1 [SIRAS1] DEPARTURES**  
**(RWY 09)**



SID	INITIAL CLIMB
<b>BAHIA 1</b>	Climb on heading 092° until passing 1600', then turn RIGHT and intercept MTA R-124 climbing to 4000' and proceed to MTA VOR. Cross MTA VOR at 5000', then turn RIGHT and intercept MTA R-356 to BAHIA. Then request instructions from ATC.
<b>CUM 1</b>	Climb on heading 092° until passing 900', then turn RIGHT heading 262°, cross MTA R-186 above 2000', and intercept MTA R-215 climbing to 4000' to CUM VOR. Then request instructions from ATC.
<b>ESNAP 1</b>	Climb on heading 092° until passing 900', then turn RIGHT and intercept MTA R-124 climbing to 4000' to ESNAP. Then request instructions from ATC.
<b>OSTRA 1</b>	Climb on heading 092° until passing 4000', then turn LEFT and intercept MTA R-077 climbing to 5000' to OSTRA. Then request instructions from ATC.
<b>SARNI 1</b>	Climb on heading 092° until passing 1600', then turn RIGHT and intercept MTA R-124 climbing to 4000' and proceed to MTA VOR. Cross MTA VOR at 5000', then turn LEFT to intercept MTA R-269 to SARNI. Then request instructions from ATC.
<b>SILED 1</b>	Climb on heading 092° until passing 900', then turn RIGHT and intercept MTA R-160 climbing to 4000' to SILED. Then request instructions from ATC.
<b>SIRAS 1</b>	Climb on heading 092° until passing 1600', then turn RIGHT and intercept MTA R-124 climbing to 4000' and proceed to MTA VOR. Cross MTA VOR at 5000', then turn LEFT to intercept MTA R-298 to SIRAS. Then request instructions from ATC.

**SVMG/PMV**  
**CHIEF GEN**  
**SANTIAGO MARINO INTL**



**JEPPESEN MARGARITA, VENEZUELA**

21 APR 17

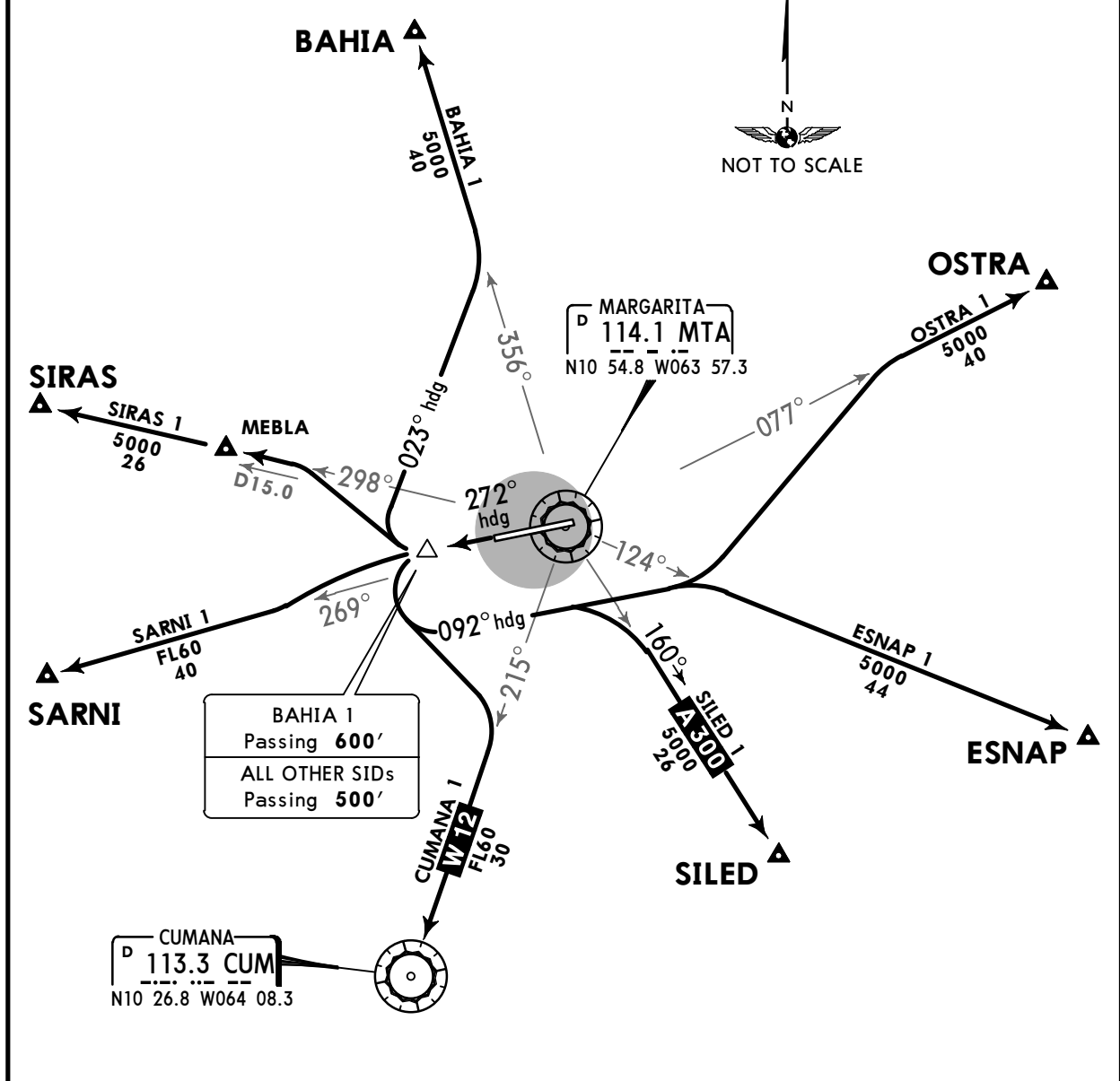
10-3B

Eff 27 Apr

**SID**

Apt Elev <b>74'</b>	Trans level: By ATC Trans alt: 5000'	 MSA MTA VOR
------------------------	--------------------------------------	-----------------

**BAHIA 1 [BAHIA1], CUMANA 1 [CUM1]**  
**ESNAP 1 [ESNAP1], OSTR 1 [OSTRA1]**  
**SARNI 1 [SARNI1], SILED 1 [SILED1]**  
**SIRAS 1 [SIRAS1] DEPARTURES**  
**(RWY 27)**



SID	INITIAL CLIMB
<b>BAHIA 1</b>	Climb on heading 272° until passing 600', then turn RIGHT heading 023° climbing to 4000' and intercept MTA R-356 to BAHIA. Then request instructions from ATC.
<b>CUMANA 1</b>	Climb on heading 272° until passing 500', then turn LEFT climbing to 4000', and intercept MTA R-215 to CUM VOR. Then request instructions from ATC.
<b>ESNAP 1</b>	Climb on heading 272° until passing 500', then turn LEFT heading 092° climbing to 4000', and intercept MTA R-124 to ESNAP. Then request instructions from ATC.
<b>OSTRA 1</b>	Climb on heading 272° until passing 500', then turn LEFT heading 092° climbing to 4000', crossing MTA R-124 turn LEFT to intercept MTA R-077 to OSTR. Then request instructions from ATC.
<b>SARNI 1</b>	Climb on heading 272° until passing 500', then turn LEFT climbing to 4000', and intercept MTA R-269 to SARNI. Then request instructions from ATC.
<b>SILED 1</b>	Climb on heading 272° until passing 500', then turn LEFT heading 092° climbing to 4000', and intercept MTA R-160 to SILED. Then request instructions from ATC.
<b>SIRAS 1</b>	Climb on heading 272° until passing 500', then turn RIGHT climbing to 4000', and intercept MTA R-298 to SIRAS. Then request instructions from ATC.

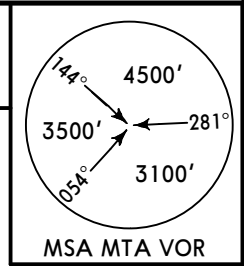


**SVMG/PMV**  
**CHIEF GEN**  
**SANTIAGO MARINO INTL**

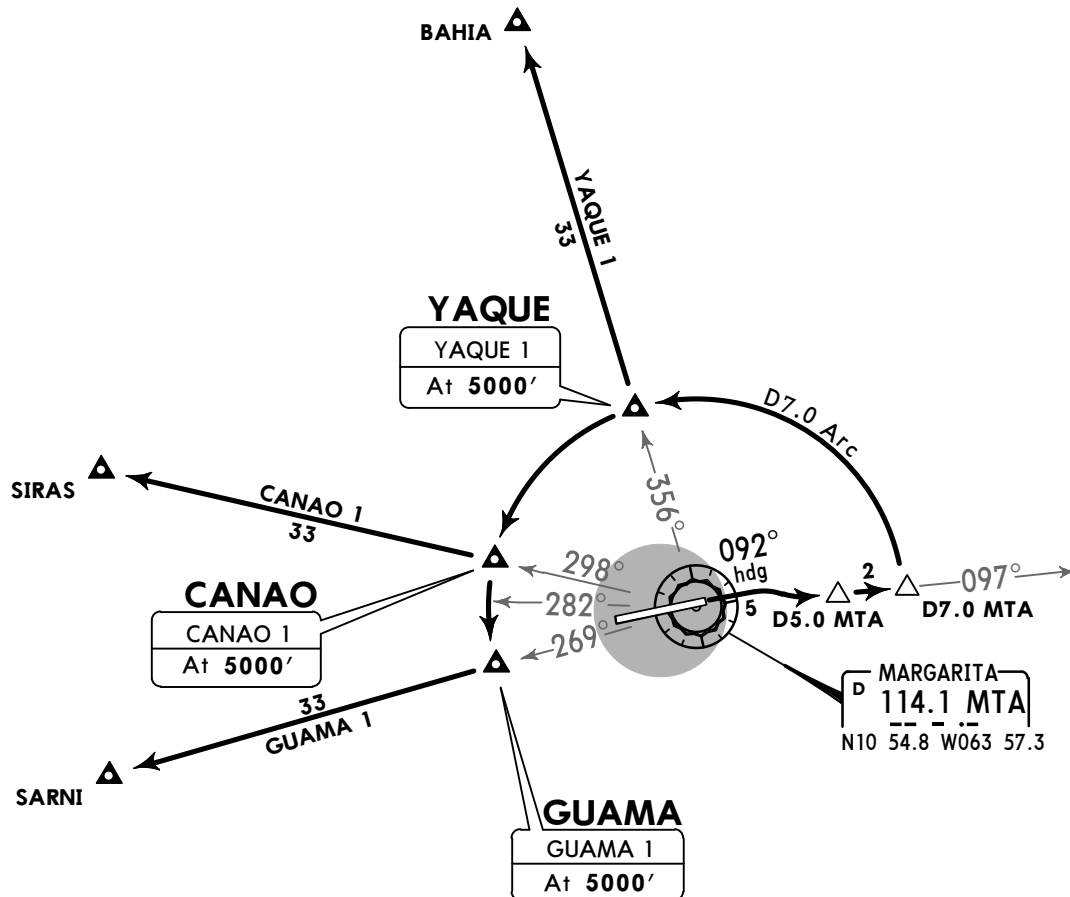
**JEPPESEN** **MARGARITA, VENEZUELA**  
 21 APR 17 **(10-3C)** **Eff 27 Apr**

**SID**

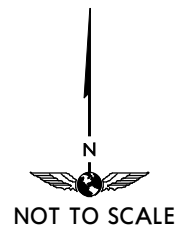
Apt Elev **74'** Trans level: By ATC Trans alt: 5000'



**CANAO 1 [CANAO1], GUAMA 1 [GUAMA1]  
 YAQUE 1 [YAQUE1] DEPARTURES  
 (RWY 09)**



**MARGARITA**  
 D 114.1 MTA  
 N10 54.8 W063 57.3



These SIDs require the following minimum climb gradient:

Gnd speed-KT	75	100	150	200	250	300
V/V (fpm)	428	570	855	1140	1425	1710

**INITIAL CLIMB**

Climb on heading 092° to 4300' while intercepting and following MTA R-097 to D7.0 MTA, then initiate a LEFT turn to join the D7.0 Arc.

SID	ROUTING
<b>CANAO 1</b>	Continue climbing to 5000' to CANAO, then intercept and follow MTA R-298 to SIRAS and continue climbing in accordance to instructions from ATC.
<b>GUAMA 1</b>	Continue climbing to 5000' to GUAMA, then intercept and follow MTA R-269 to SARNI and continue climbing in accordance to instructions from ATC.
<b>YAQUE 1</b>	Continue climbing to 5000' to YAQUE, then intercept and follow MTA R-356 to BAHIA and continue climbing in accordance to instructions from ATC.

# SVMG/PMV

CHIEF GEN

SANTIAGO MARINO INTL



# MARGARITA, VENEZUELA

21 APR 17

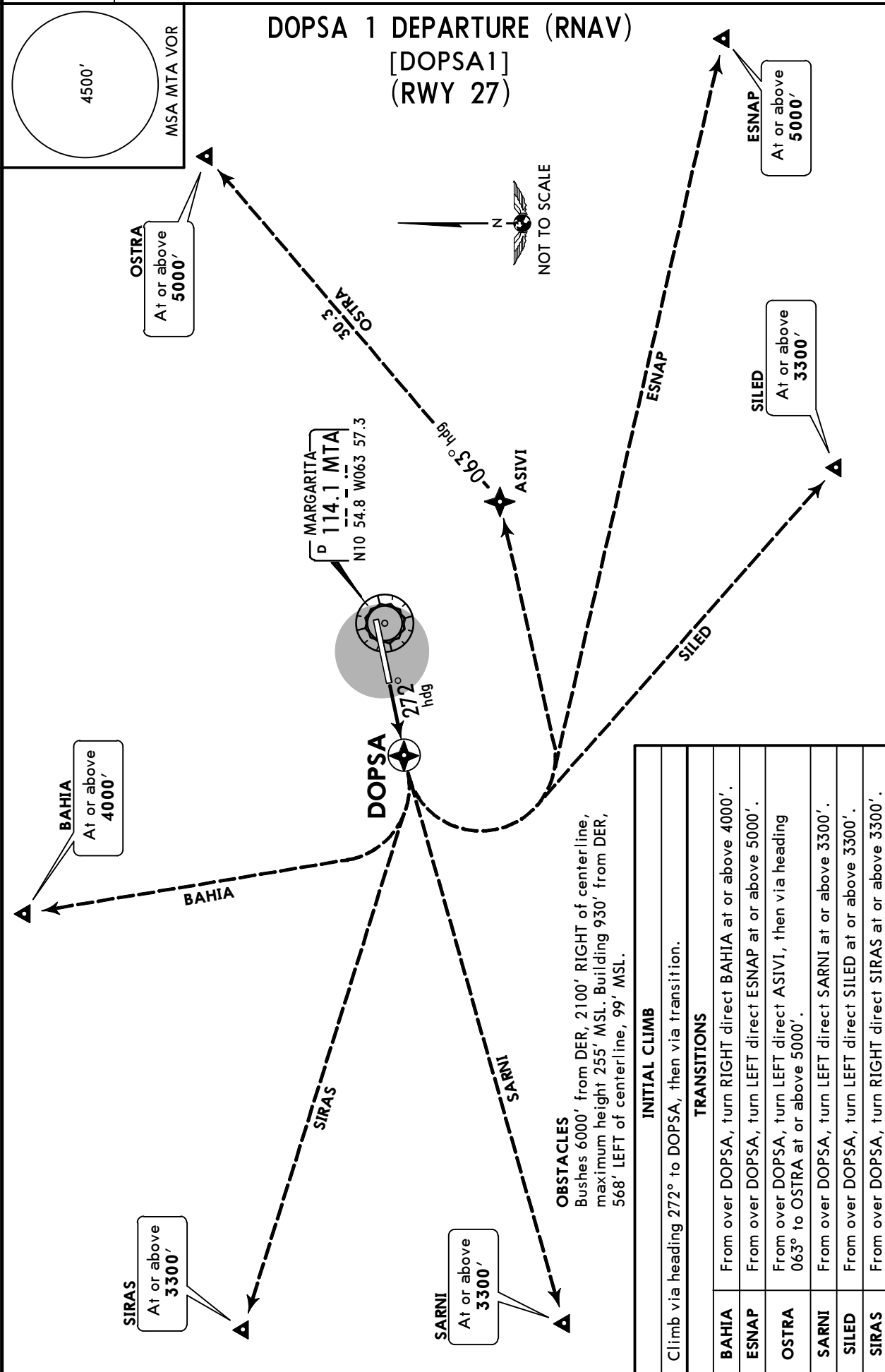
10-3D

Eff 27 Apr

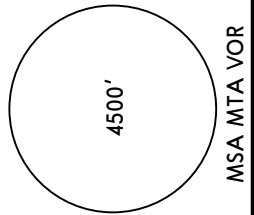
RNAV SID

Apt Elev  
74'

Trans level: By ATC Trans alt: 5000'  
GPS required.



## DOPSA 1 DEPARTURE (RNAV) [DOPSA1] (RWY 27)



**OSTRA**  
At or above  
5000'

**MARGARITA**  
D 114.1 MTA  
N10 54.8 W063 57.3

**BAHIA**  
At or above  
4000'

**SIRAS**  
At or above  
3300'

**SARNI**  
At or above  
3300'

**SILED**  
At or above  
3300'

**ESNAP**  
At or above  
5000'

**OBSTACLES**  
Bushes 6000' from DER, 2100' RIGHT of centerline, maximum height 255' MSL. Building 930' from DER, 568' LEFT of centerline, 99' MSL.

INITIAL CLIMB	
Climb via heading 272° to DOPSA, then via transition.	
TRANSITIONS	
<b>BAHIA</b>	From over DOPSA, turn RIGHT direct BAHIA at or above 4000'.
<b>ESNAP</b>	From over DOPSA, turn LEFT direct ESNAP at or above 5000'.
<b>OSTRA</b>	From over DOPSA, turn LEFT direct ASIVI, then via heading 063° to OSTRAS at or above 5000'.
<b>SARNI</b>	From over DOPSA, turn LEFT direct SARNI at or above 3300'.
<b>SILED</b>	From over DOPSA, turn LEFT direct SILED at or above 3300'.
<b>SIRAS</b>	From over DOPSA, turn RIGHT direct SIRAS at or above 3300'.

# SVMG/PMV



JEPPESSEN

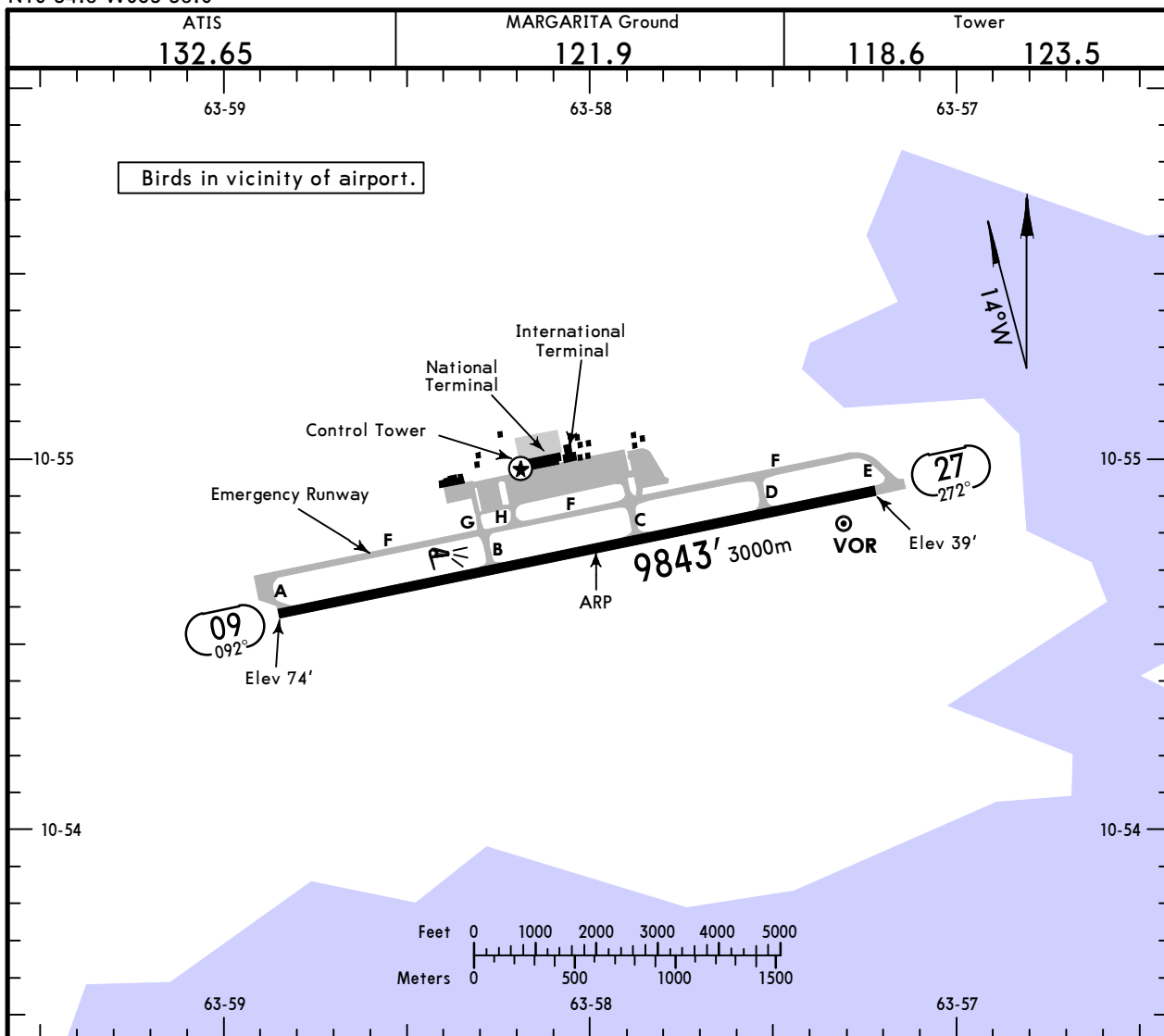
# MARGARITA, VENEZUELA

Apt Elev **74'**

20 OCT 17 **(10-9)**

CHIEF GEN  
SANTIAGO MARINO INTL

N10 54.8 W063 58.0



### ADDITIONAL RUNWAY INFORMATION

RWY	ALS	PAPI-L (angle 3.0°)	USABLE LENGTHS				
			Threshold	Glide Slope	TAKE-OFF	WIDTH	
09	RL			8738'	2663m		148'
27	RL						45m

	TAKE-OFF	FOR FILING AS ALTERNATE		
		Precision	LOC Rwy 09	Other
1 & 2 Eng	Rwys 09, 27 1.6 km	A 600'-	B 800'-	1000'-
3 & 4 Eng	800m	C 3.2 km	D 3.2 km	3.2 km

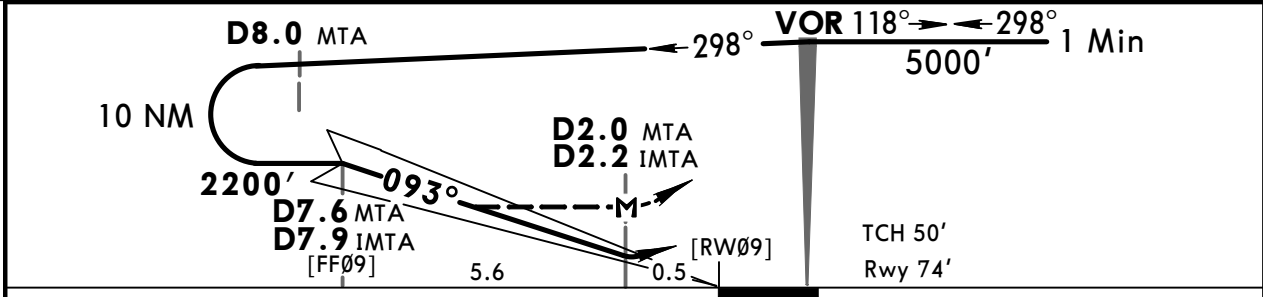
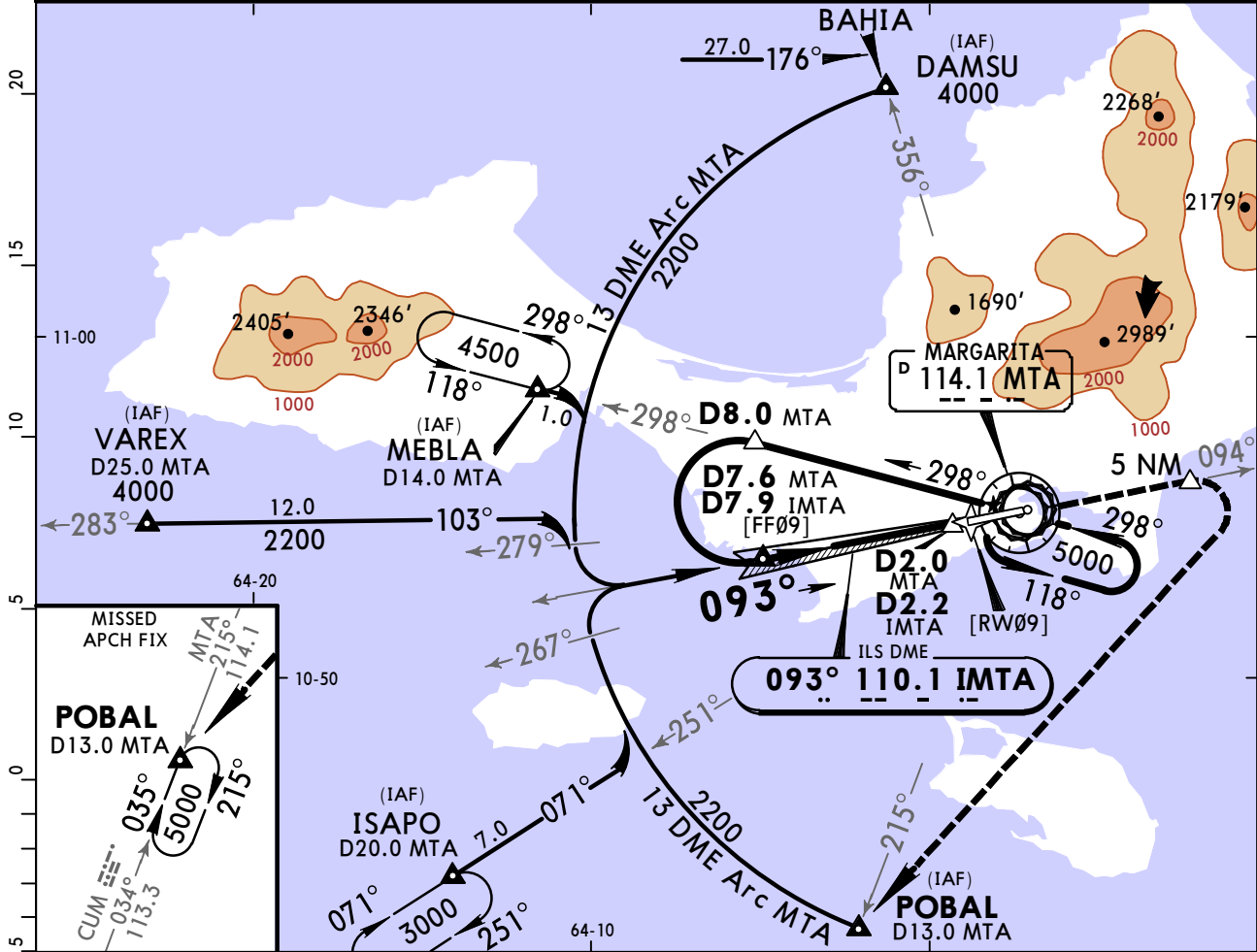
# SVMG/PMV

CHIEF GEN  
SANTIAGO MARINO INTL

**JEPPESEN** 21 APR 17 **(11-1)** Eff 27 Apr

**MARGARITA, VENEZUELA**  
ILS DME Rwy 09

BRIEFING STRIP™	ATIS 132.65		MARGARITA Approach 119.9 120.5		MARGARITA Tower 118.6 123.5		Ground 121.9
	LOC IMTA <b>110.1</b>	Final Apch Crs <b>093°</b>	Minimum Alt <b>D7.6 MTA</b> <b>D7.9 IMTA</b> 2200' (2126')		ILS DA(H) <b>280'</b> (206')	Apt Elev 74' Rwy 74'	
	<p><b>MISSED APCH:</b> Climb to 5000', cross MTA VOR intercept outbound MTA VOR R-094, at 5NM turn RIGHT direct POBAL and follow ATC instructions.</p> <p>Alt Set: hPa      Rwy Elev: 3 hPa      Trans level: By ATC      Trans alt: 5000'</p> <p>1. CAUTION: Unlighted high terrain 1312' (400m) left of RWY approach course and 1.0 NM from threshold of RWY 09. Lighted tank 951' (290m) right of RWY approach course 1148' (350m) from threshold of RWY 09.</p>						



Gnd speed-Kts	70	90	100	120	140	160	ALS PAPI-L	5000'	MTA 114.1 R-094	
GS	3.20°	396	510	566	679	793				906
FAP to MAP	5.6	4:48	3:44	3:22	2:48	2:24				2:06

STRAIGHT-IN LANDING RWY 09				CIRCLE-TO-LAND	
ILS		LOC (GS out)		Not Authorized North of Rwy 09-27	
DA(H) <b>280'</b> (206')		MDA(H) <b>430'</b> (356')		MDA(H)	
FULL	ALS out	ALS out	ALS out	Max Kts	
A				100	660' (586') - 1.6 km
B				135	
C	1.2 km		1.6 km	180	760' (686') - 2.4 km
D				205	770' (696') - 3.6 km

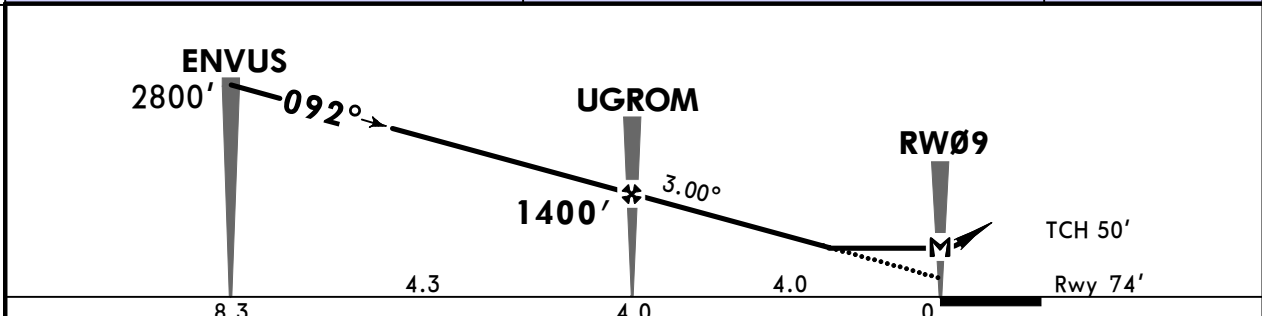
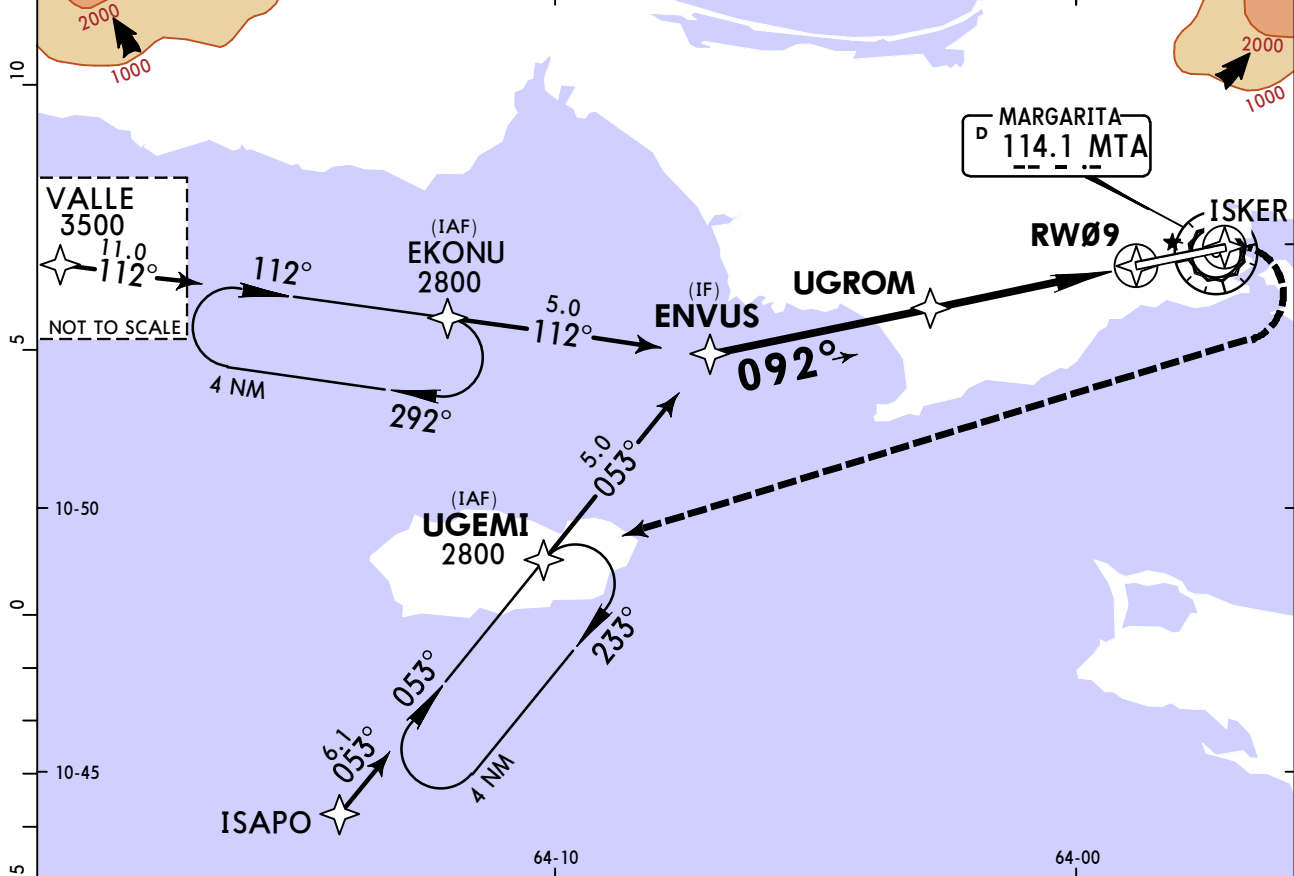
# SVMG/PMV

CHIEF GEN  
SANTIAGO MARINO INTL

**JEPPESEN**  
29 NOV 19  
Eff 5 Dec (12-1)

**MARGARITA, VENEZUELA**  
RNP Y Rwy 09

ATIS 132.65		MARGARITA Approach 119.9 120.5		MARGARITA Tower 118.6 123.5		Ground 121.9
RNAV	Final Apch Crs <b>092°</b>	<b>UGROM</b> 1400' (1326')	LNAV MDA(H) <b>520' (446')</b>	Apt Elev 74' Rwy 74'		4500  MSA MTA VOR
<b>MISSED APCH: Climb to 3800' direct ISKER then climbing RIGHT turn direct UGEMI and hold.</b>						
Alt Set: hPa		Rwy Elev: 3 hPa		Trans level: By ATC		Trans alt: 5000'
1. GPS Required. 2. Procedure not authorized when using remote altimeter setting. 3. DME/DME not authorized. 4. Configure for final descent prior to intermediate fix.						



Gnd speed-Kts	70	90	100	120	140	160	ALS PAPI-L	3800'	ISKER
Descent Angle 3.00°	372	478	531	637	743	849			
MAP at RW09									

STRAIGHT-IN LANDING RWY 09  
LNAV  
MDA(H) 520' (446')

A	2.0 km
B	
C	
D	

# SVMG/PMV

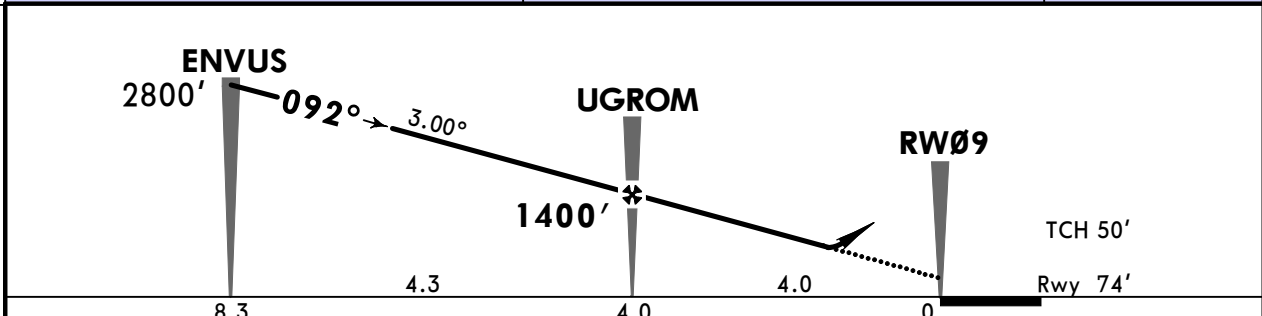
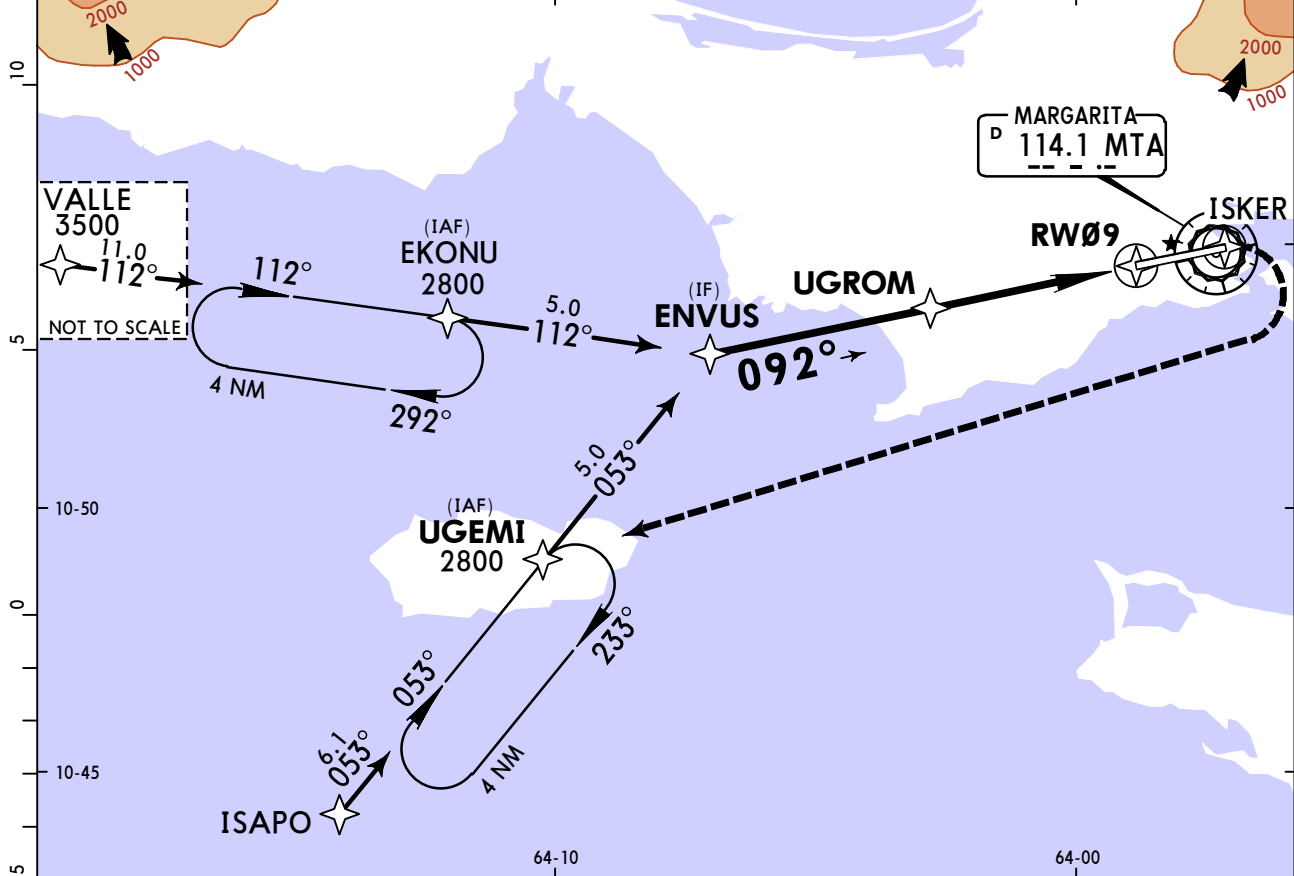
CHIEF GEN

SANTIAGO MARINO INTL

**JEPPESEN**  
 29 NOV 19  
 Eff 5 Dec (12-2)

**MARGARITA, VENEZUELA**  
 RNP Z Rwy 09 (LNAV/VNAV)

ATIS 132.65		MARGARITA Approach 119.9 120.5		MARGARITA Tower 118.6 123.5		Ground 121.9
RNAV	Final Apch Crs <b>092°</b>	<b>UGROM</b> 1400' (1326')	LNAV/VNAV DA(H) <b>520' (446')</b>	Apt Elev 74' Rwy 74'		
<b>MISSED APCH: Climb to 3800' direct ISKER then climbing RIGHT turn direct UGEMI and hold.</b>						
Alt Set: hPa		Rwy Elev: 3 hPa	Trans level: By ATC		Trans alt: 5000'	
1. GPS Required. 2. Procedure not authorized when using remote altimeter setting. 3. DME/DME not authorized. 4. Configure for final descent prior to intermediate fix.						MSA MTA VOR



Gnd speed-Kts	70	90	100	120	140	160	ALS PAPI-L	3800'	↑	ISKER
Descent Angle 3.00°	372	478	531	637	743	849				
MAP at DA										

STRAIGHT-IN LANDING RWY 09  
 LNAV/VNAV  
 DA(H) 520' (446')

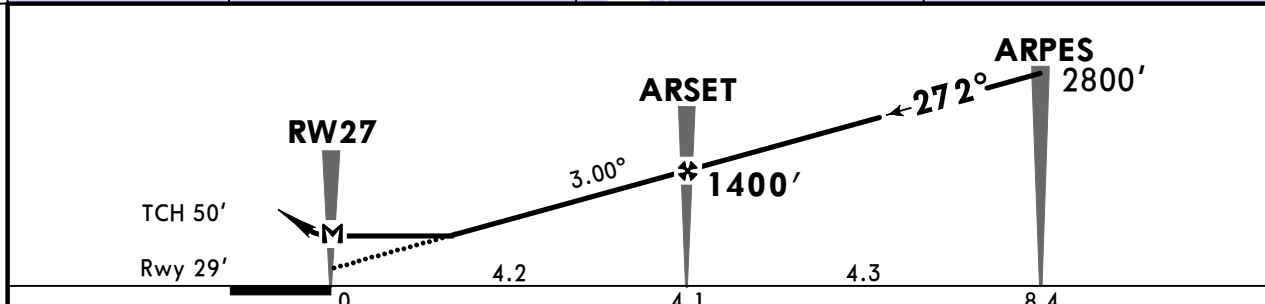
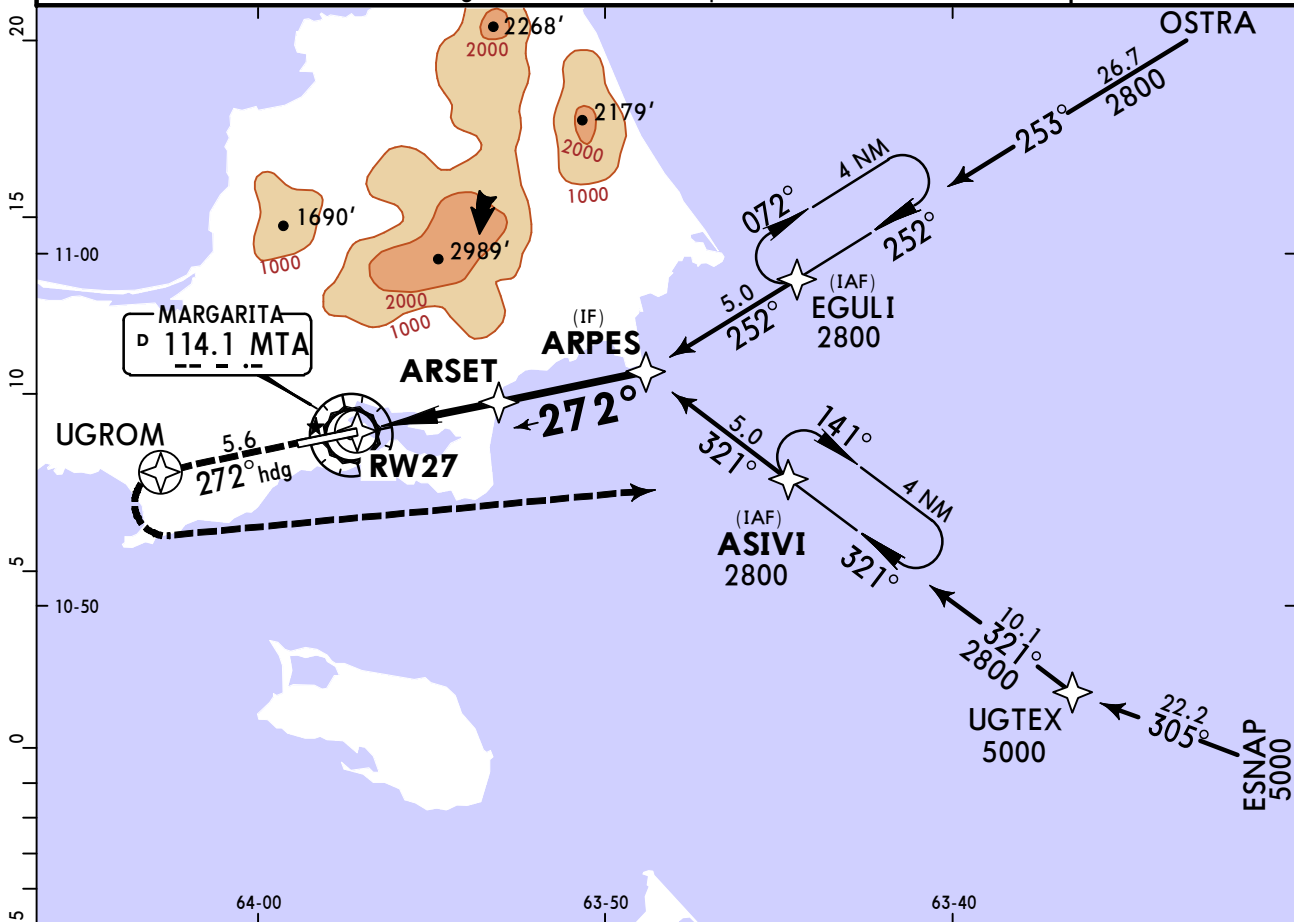
A	2.0 km
B	
C	
D	

**SVMG/PMV**  
**CHIEF GEN**  
**SANTIAGO MARINO INTL**

**JEPPESEN**  
 29 NOV 19  
 Eff 5 Dec (12-3)

**MARGARITA, VENEZUELA**  
**RNP Y Rwy 27**

ATIS 132.65		MARGARITA Approach 119.9 120.5		MARGARITA Tower 118.6 123.5		Ground 121.9		
RNAV	Final Apch Crs <b>272°</b>	ARSET <b>1400'</b> (1371')		LNAV MDA(H) <b>310'</b> (281')	Apt Elev 74' Rwy 29'			
<b>MISSED APCH: Climb to 3800' on 272° heading to UGROM then climbing LEFT turn direct ASIVI and hold.</b>								
Alt Set: hPa		Rwy Elev: 1 hPa		Trans level: By ATC			Trans alt: 5000'	
1. GPS Required. 2. CAUTION: High terrain right of approach, remain at or above the depicted VPA. 3. Procedure not authorized when using remote altimeter setting. 4. DME/DME not authorized. 5. Configure for final descent prior to intermediate fix.								
MSA MTA VOR								



Gnd speed-Kts	70	90	100	120	140	160	3800'	on 272° hdg	UGROM
Descent Angle 3.00°	372	478	531	637	743	849			
MAP at RW27									

**STRAIGHT-IN LANDING RWY 27**  
**LNAV**  
 MDA(H) **310'** (281')

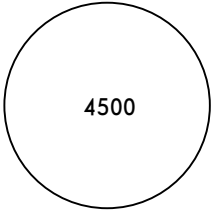
A	1.6 km
B	
C	
D	

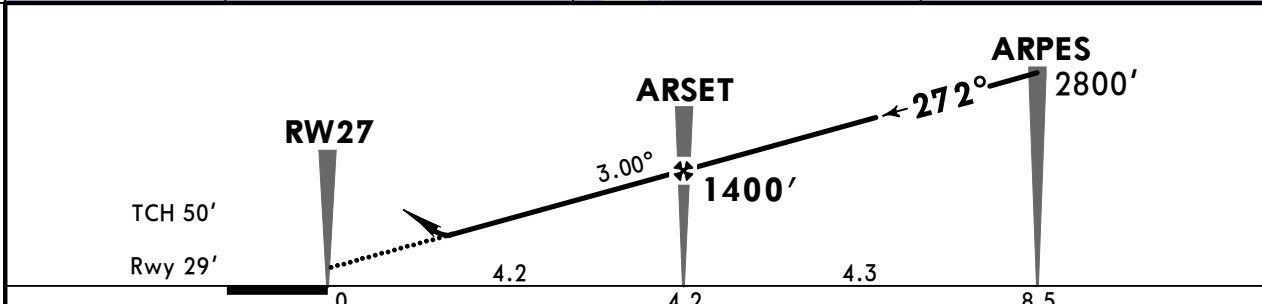
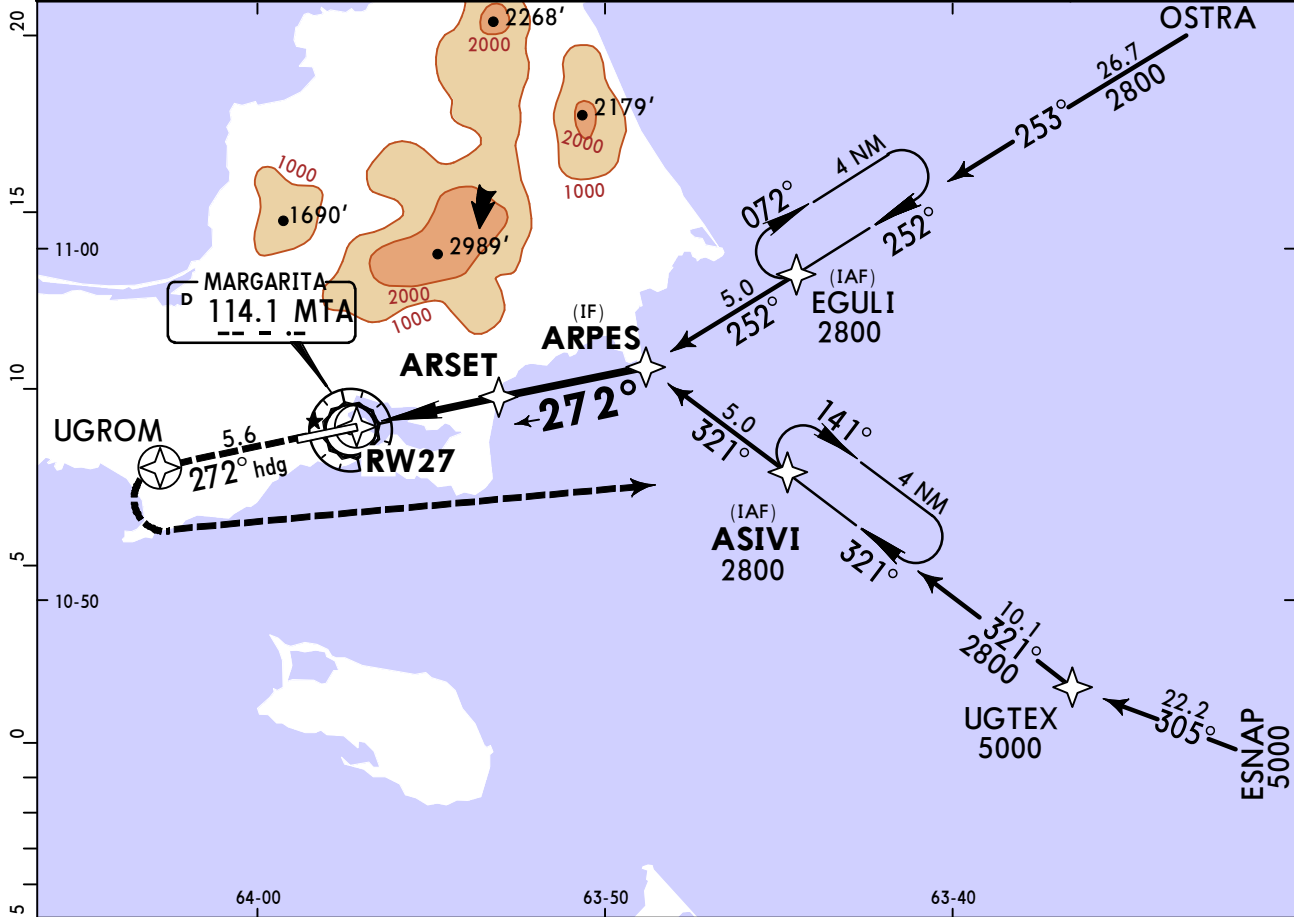
# SVMG/PMV

CHIEF GEN  
SANTIAGO MARINO INTL

**JEPPESEN**  
29 NOV 19  
Eff 5 Dec (12-4)

**MARGARITA, VENEZUELA**  
RNP Z Rwy 27 (LNAV/VNAV)

ATIS 132.65		MARGARITA Approach 119.9 120.5		MARGARITA Tower 118.6 123.5		Ground 121.9	
RNAV	Final Apch Crs <b>272°</b>	ARSET <b>1400'</b> (1371')		LNAV/VNAV DA(H) <b>304'</b> (275')	Apt Elev 74' Rwy 29'	 <p>4500</p> <p>MSA MTA VOR</p>	
<b>MISSED APCH:</b> Climb to 3800' on 272° heading to UGROM then climbing LEFT turn direct ASIVI and hold.							
Alt Set: hPa		Rwy Elev: 1 hPa		Trans level: By ATC			Trans alt: 5000'
1. GPS Required. 2. CAUTION: High terrain right of approach, remain at or above the depicted VPA. 3. Procedure not authorized when using remote altimeter setting. 4. DME/DME not authorized. 5. Configure for final descent prior to intermediate fix.							



Gnd speed-Kts	70	90	100	120	140	160	3800' ↑ on 272° hdg UGROM
Descent Angle 3.00°	372	478	531	637	743	849	
MAP at DA							

**STRAIGHT-IN LANDING RWY 27**  
LNAV/VNAV  
DA(H) **304'** (275')

A	1.2 km
B	
C	
D	





## Chart changes since cycle 10-2020

ADD = added chart, REV = revised chart, DEL = deleted chart.

ACT	PROCEDURE IDENT	INDEX	REV DATE	EFF DATE
-----	-----------------	-------	----------	----------

**MARGARITA, (CHIEF GEN SANTIAGO MARINO INTL - SVMG)**

## TERMINAL CHART CHANGE NOTICES

No Chart Change Notices for Airport SVMG

SUDU..PONPA..PTA..GBE..DIL..VIE..SAVT