

## General Information

Location: TEGUCIGALPA HND  
ICAO/IATA: MHTG / TGU  
Lat/Long: N14° 03.62', W087° 13.04'  
Elevation: 3307 ft

Airport Use: Public  
Daylight Savings: Not Observed  
UTC Conversion: +6:00 = UTC  
Magnetic Variation: 1.0° W

Fuel Types: 100 Octane (LL), Jet A-1  
Customs: Yes  
Airport Type: IFR  
Landing Fee: Yes  
Control Tower: Yes  
Jet Start Unit: No  
LLWS Alert: No  
Beacon: Yes

Sunrise: 1212 Z  
Sunset: 2354 Z

## Runway Information

Runway: 02  
Length x Width: 6631 ft x 148 ft  
Surface Type: asphalt  
TDZ-Elev: 3288 ft  
Lighting: Edge  
Displaced Threshold: 1171 ft

Runway: 20  
Length x Width: 6631 ft x 148 ft  
Surface Type: asphalt  
TDZ-Elev: 3232 ft  
Lighting: Edge

## Communication Information

ATIS: 127.750  
Toncontin Tower: 118.700  
Toncontin Ground: 121.900  
Tegucigalpa Approach: 126.700  
Toncontin Approach: 119.100

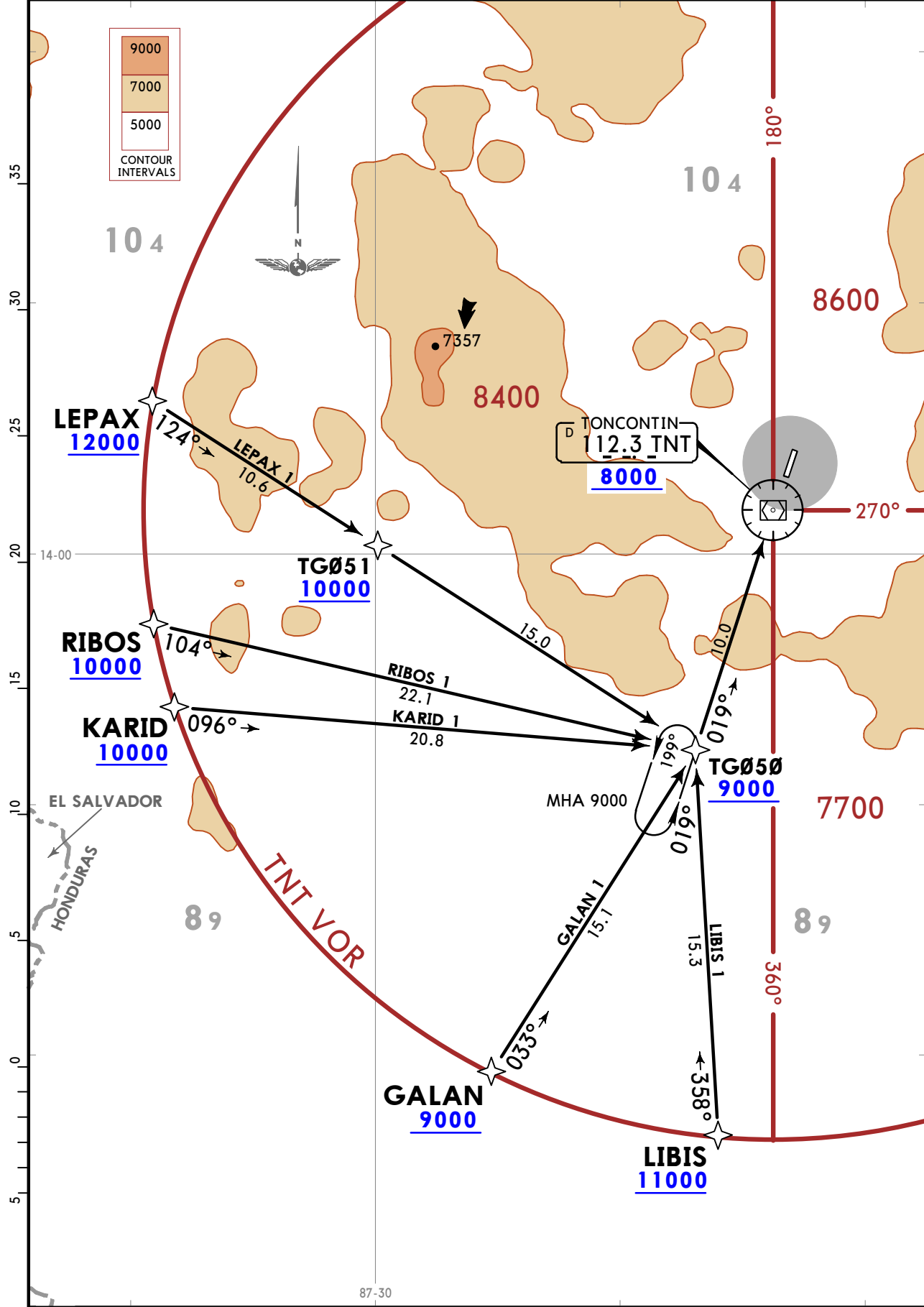
# MHTG/TGU TONCONTIN INTL

# JEPPESEN TEGUCIGALPA, HONDURAS

1 OCT 21 **10-2** Eff 7 Oct **RNAV STAR**

*ATIS <b>127.75</b>	Apt Elev <b>3307</b>	Alt Set: hPa Trans level: FL200
		RNAV 1
EXPECT SOUTH RNAV (RNP) RWY 02 approach.		

## GALAN 1 [GALAN1], KARID 1 [KARID1], LEPAX 1 [LEPAX1] LIBIS 1 [LIBIS1], RIBOS 1 [RIBOS1] RNAV ARRIVALS

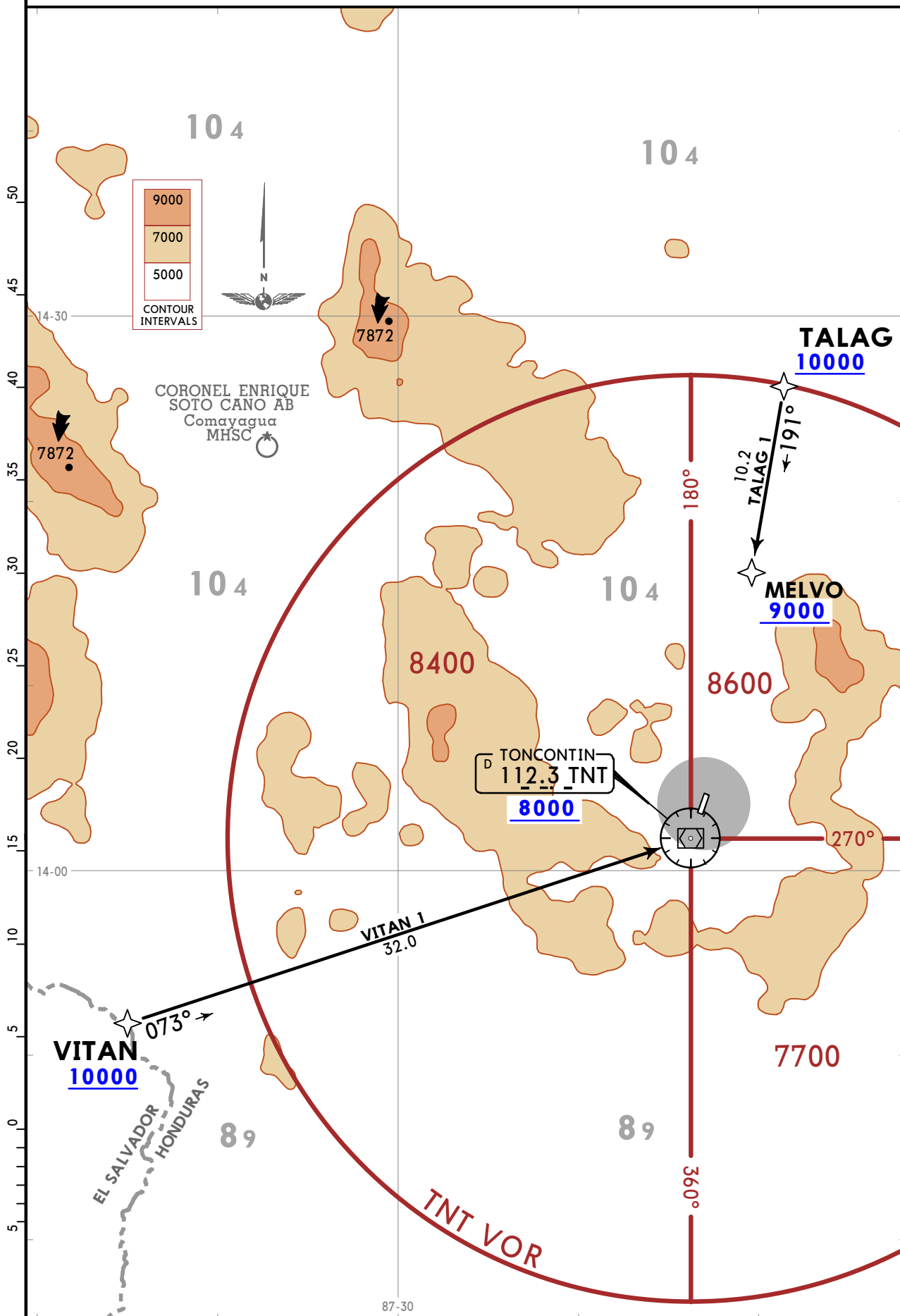


# MHTG/TGU TONCONTIN INTL

**JEPPESEN** TEGUCIGALPA, HONDURAS  
1 OCT 21 **(10-2A)** Eff 7 Oct **RNAV STAR**

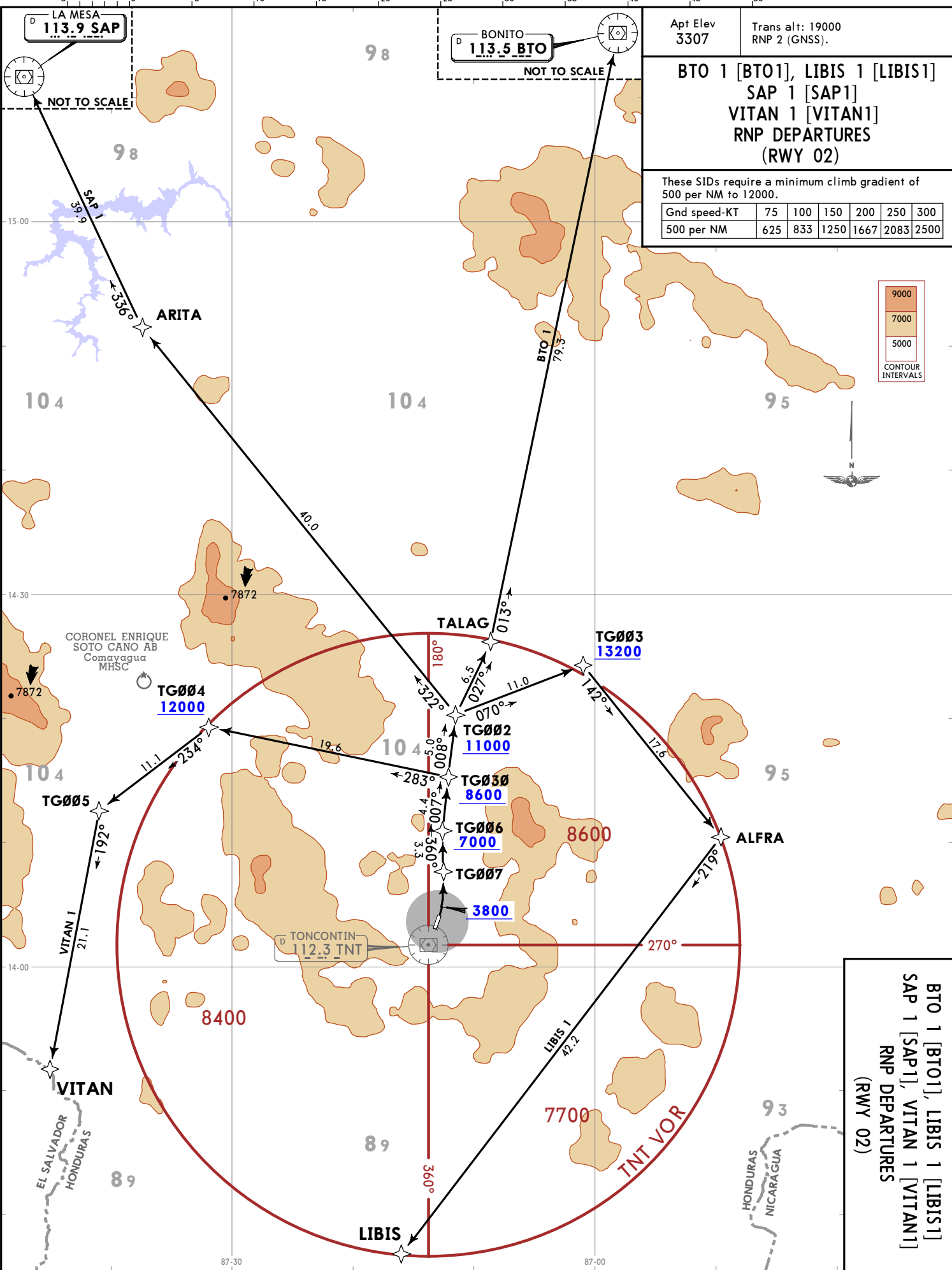
*ATIS <b>127.75</b>	Apt Elev <b>3307</b>	Alt Set: hPa Trans level: FL200
		RNAV 1
EXPECT RNAV (RNP) RWY 02, RNAV (RNP) RWY 20 approaches.		

## TALAG 1 [TALAG1], VITAN 1 [VITAN1] RNAV ARRIVALS



CHANGES: SAP 1 Departure added, bearings.

MHTG/TGU  
TONCONTIN INTL  
19 FEB 21  
JEPPESSEN  
EFF 25 Feb  
10-3



**BONITO 113.5 BTO**  
NOT TO SCALE

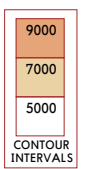
**LA MESA 113.9 SAP**  
NOT TO SCALE

Apt Elev 3307  
Trans alt: 19000  
RNP 2 (GNSS).

**BTO 1 [BTO1], LIBIS 1 [LIBIS1]  
SAP 1 [SAP1]  
VITAN 1 [VITAN1]  
RNP DEPARTURES  
(RWY 02)**

These SIDs require a minimum climb gradient of 500 per NM to 12000.

Gnd speed-KT	75	100	150	200	250	300
500 per NM	625	833	1250	1667	2083	2500



**BTO 1 [BTO1], LIBIS 1 [LIBIS1]  
SAP 1 [SAP1], VITAN 1 [VITAN1]  
RNP DEPARTURES  
(RWY 02)**

TEGUCIGALPA, HONDURAS  
RNAV SID

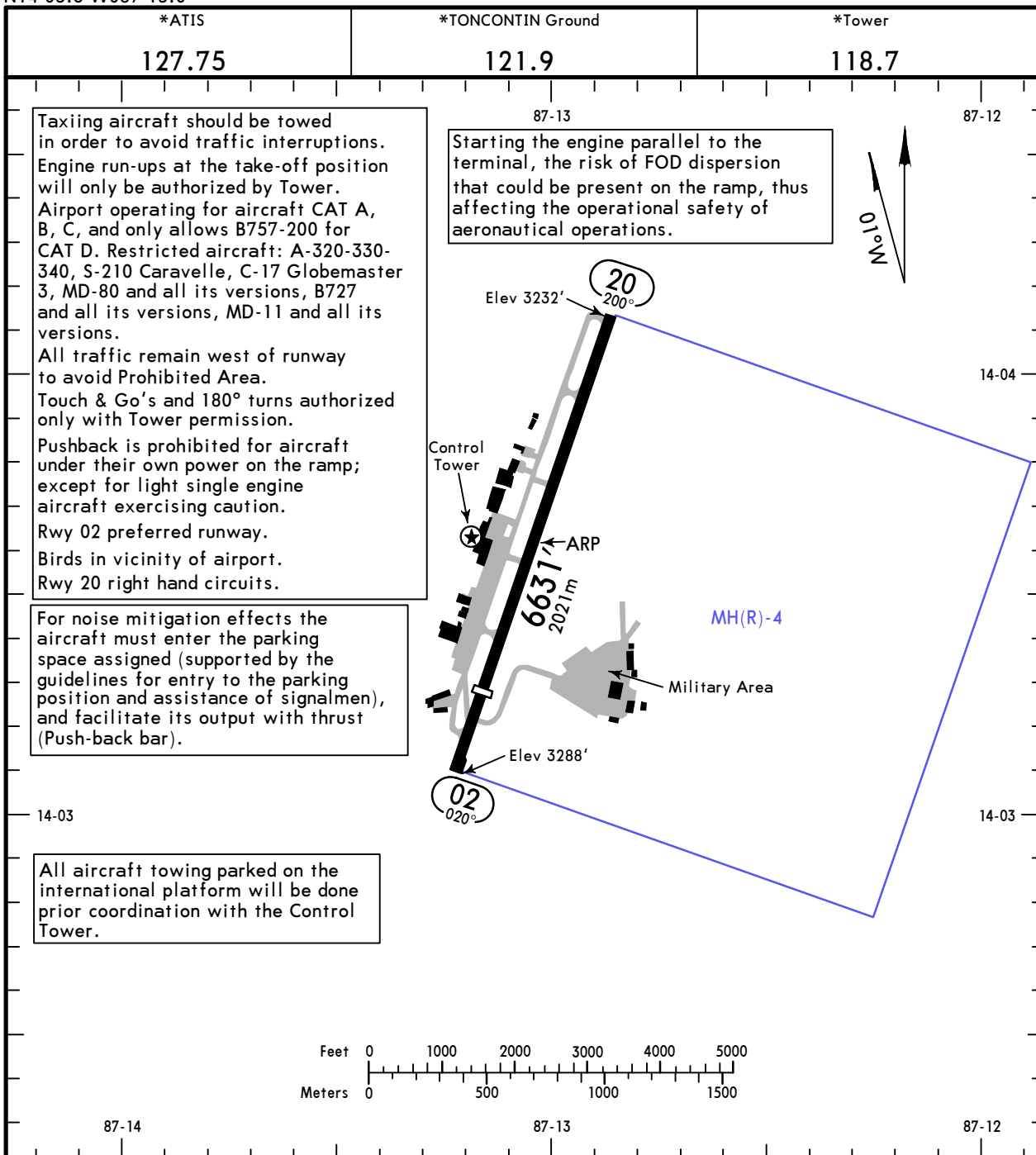
# MHTG/TGU

Apt Elev **3307'**  
N14 03.6 W087 13.0

# JEPPESSEN TEGUCIGALPA, HONDURAS

30 APR 21 **(10-9)**

TONCONTIN INTL



Taxiing aircraft should be towed in order to avoid traffic interruptions. Engine run-ups at the take-off position will only be authorized by Tower. Airport operating for aircraft CAT A, B, C, and only allows B757-200 for CAT D. Restricted aircraft: A-320-330-340, S-210 Caravelle, C-17 Globemaster 3, MD-80 and all its versions, B727 and all its versions, MD-11 and all its versions. All traffic remain west of runway to avoid Prohibited Area. Touch & Go's and 180° turns authorized only with Tower permission. Pushback is prohibited for aircraft under their own power on the ramp; except for light single engine aircraft exercising caution. Rwy 02 preferred runway. Birds in vicinity of airport. Rwy 20 right hand circuits.

Starting the engine parallel to the terminal, the risk of FOD dispersion that could be present on the ramp, thus affecting the operational safety of aeronautical operations.

For noise mitigation effects the aircraft must enter the parking space assigned (supported by the guidelines for entry to the parking position and assistance of signalmen), and facilitate its output with thrust (Push-back bar).

All aircraft towing parked on the international platform will be done prior coordination with the Control Tower.

**ADDITIONAL RUNWAY INFORMATION**

RWY		USABLE LENGTHS		TAKE-OFF	WIDTH
		Threshold	Glide Slope		
02	MIRL ① REIL ② PAPI-R (angle 5.3°)	5459'1664m			148'
20	MIRL ① REIL PAPI-R (angle 5.0°)				45m

- ① Activate on 118.7
- ② Cat A, B only.

<b>State</b>	<b>TAKE-OFF</b>
<b>Not Applicable</b>	

# MHTG/TGU



# TEGUCIGALPA, HONDURAS

TONCONTIN INTL

9 JUL 21

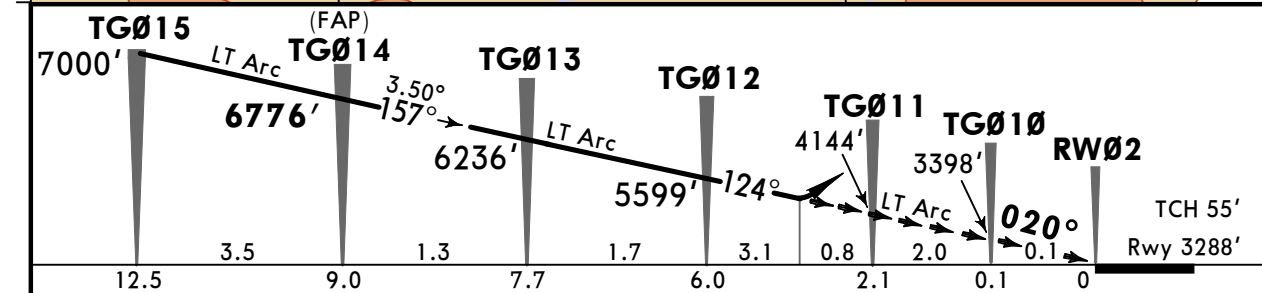
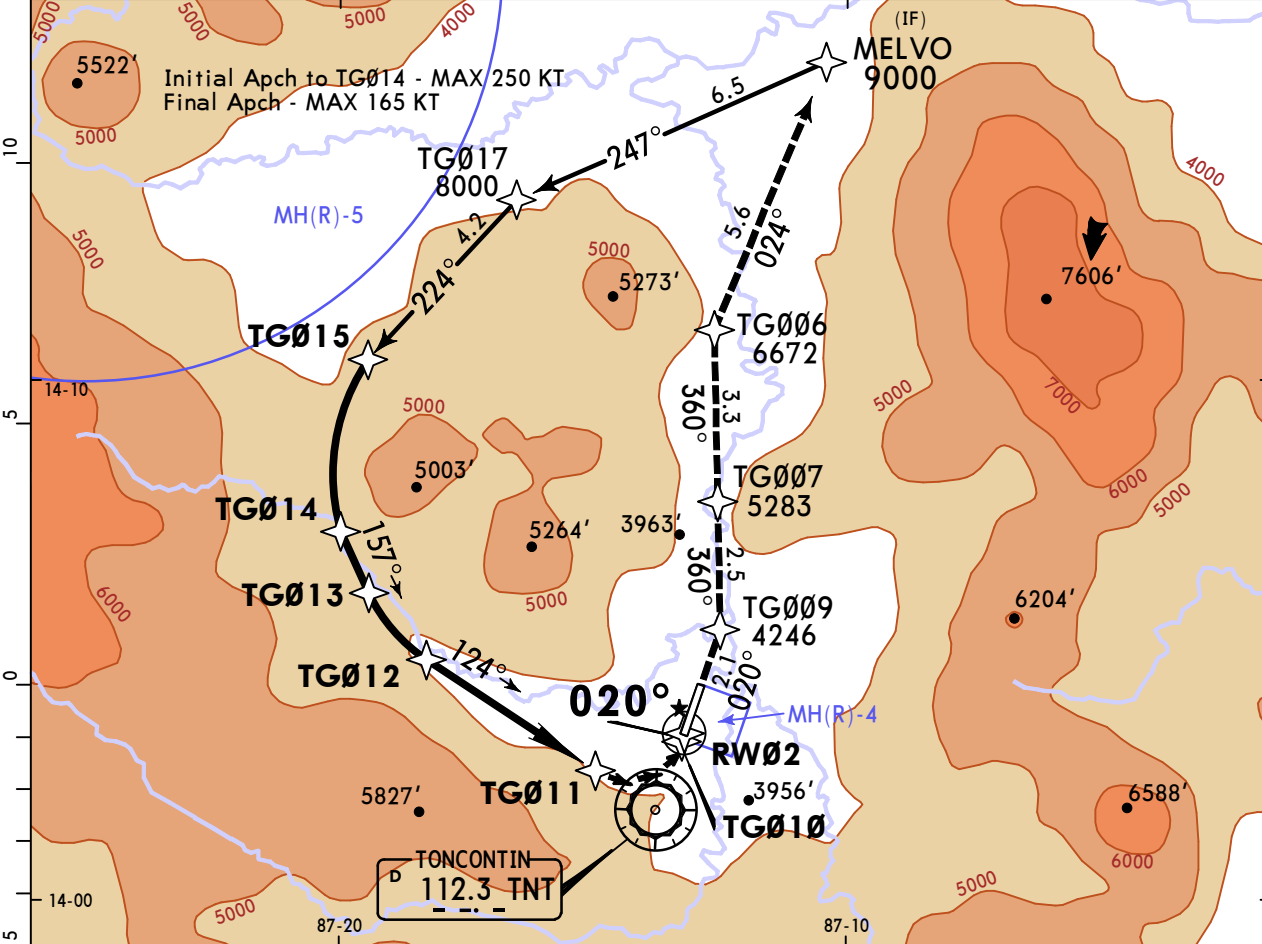
12-20 Eff 15 Jul

RNP Rwy 02 (AR) NORTH

BRIEFING STRIP™

*ATIS 127.75	*TONCONTIN Approach 119.1	*TEGUCIGALPA Control 126.7	*TONCONTIN Tower 118.7	*Ground 121.9															
RNAV	Final Apch Crs <b>020°</b>	TGØ14 <b>6776'</b> (3488')	RNP 0.30 DA(H) <b>4429'</b> (1141')	Apt Elev 3307' Rwy 3288'															
<b>MISSED APCH:</b> Climb and intercept lateral navigation. Maintain RNP track. MAX 175 KT. Re-engage LNAV by TGØ11.				<p>MSA TNT VOR</p>															
<table border="1"> <thead> <tr> <th colspan="5">Missed Approach Climb Gradient</th> </tr> <tr> <th>Gnd speed-Kts</th> <th>75</th> <th>100</th> <th>150</th> <th>175</th> </tr> </thead> <tbody> <tr> <td>260'/NM</td> <td>325</td> <td>433</td> <td>650</td> <td>759</td> </tr> </tbody> </table>					Missed Approach Climb Gradient					Gnd speed-Kts	75	100	150	175	260'/NM	325	433	650	759
Missed Approach Climb Gradient																			
Gnd speed-Kts	75	100	150	175															
260'/NM	325	433	650	759															
RNP AR Apch	Alt Set: hPa	Rwy Elev: 115 hPa	Trans level: FL 200	Trans alt: 19000'															

1. Special Aircraft & Aircrew Authorization Required.
2. RF and GPS capability required.
3. CAUTION: High terrain all quadrants. Do not exceed distance limits in the holding pattern and procedure turns.
4. Procedure not authorized if temperature is below 14°C or above 52°C.
5. DME/DME not authorized.
6. VGSI and descent angle not coincident.
7. Pilot controlled lighting Rwy 02/20 REIL.



Gnd speed-Kts	70	90	100	120	140	160	REIL PAPI-R	intercept and lateral navigation	
Glide Path Angle	3.50°	434	557	619	743	867			991
FAP to DA	6.2	5:19	4:08	3:43	3:06	2:39			2:20

**State** STRAIGHT-IN LANDING  
RNP 0.30  
DA(H) **4429'** (1141')

PANS OPS

A	NA
B	
C	V2.6 km

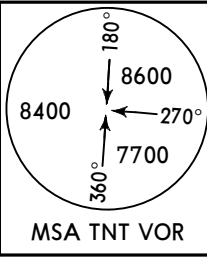
CHANGES: Bearings, Rwy elevation.

MHTG/TGU  
TONCONTIN INTL

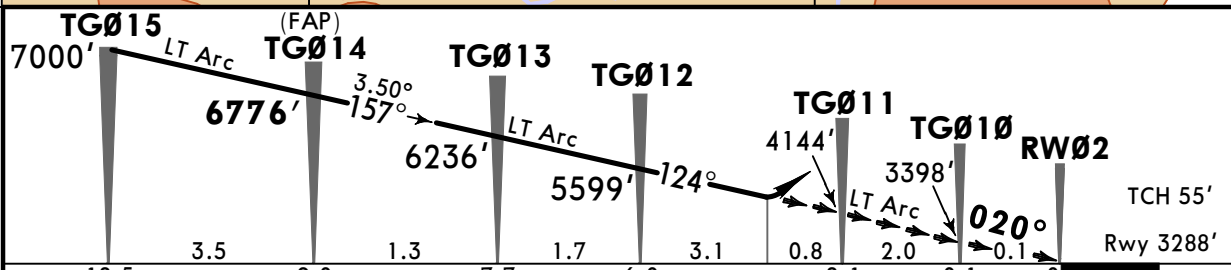
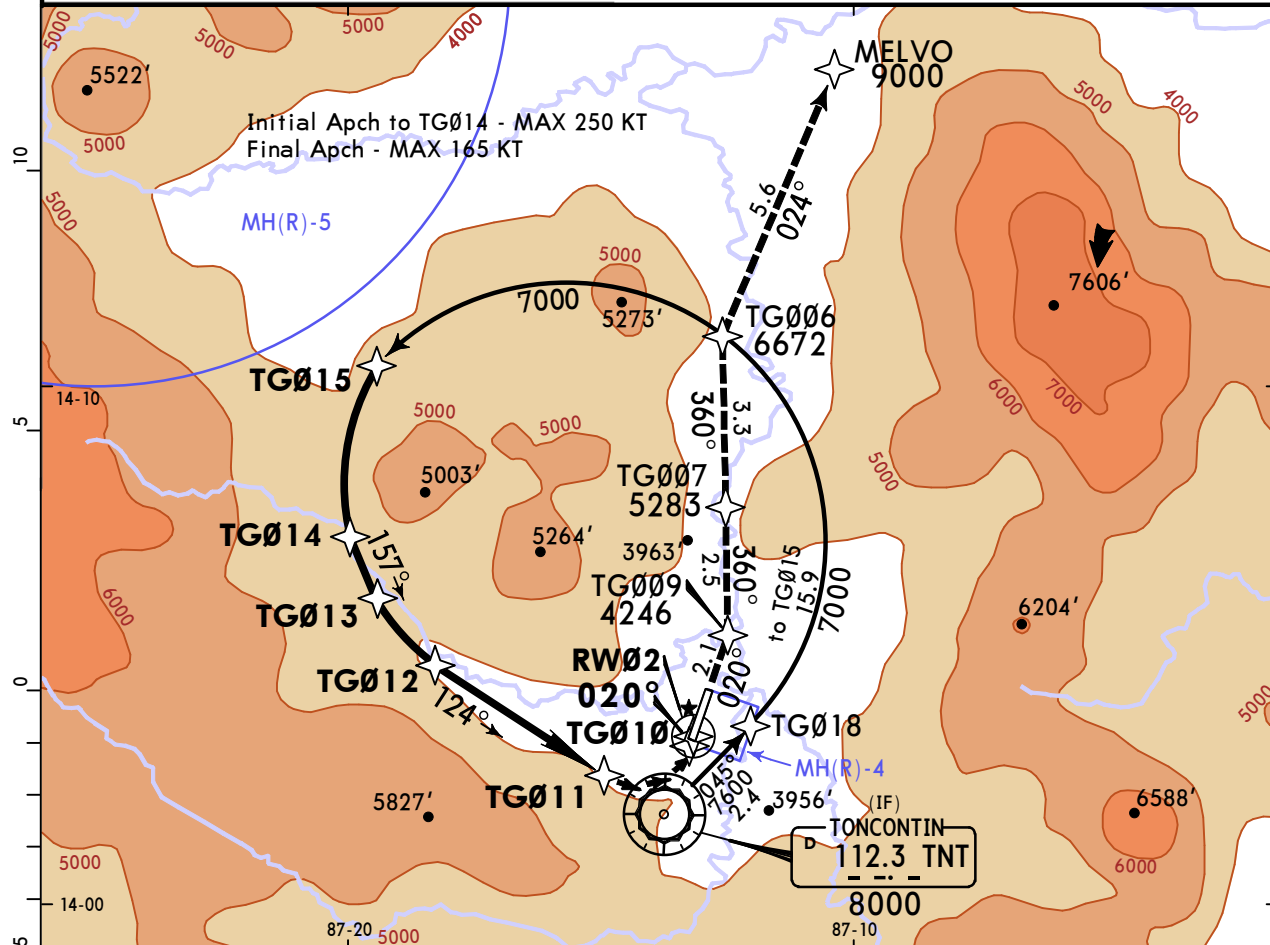
**JEPPesen** CAT C  
9 JUL 21 **12-21** Eff 15 Jul

**TEGUCIGALPA, HONDURAS**  
RNP Rwy 02 (AR) SOUTH

*ATIS 127.75	*TONCONTIN Approach 119.1	*TEGUCIGALPA Control 126.7	*TONCONTIN Tower 118.7	*Ground 121.9														
RNAV	Final Apch Crs <b>020°</b>	TG014 <b>6776'</b> (3488')	RNP 0.30 DA(H) <b>4429'</b> (1141')	Apt Elev 3307' Rwy 3288'														
<b>MISSED APCH:</b> Climb and intercept lateral navigation. Maintain RNP track. MAX 175 KT. Re-engage LNAV by TG011.																		
					<table border="1"> <thead> <tr> <th colspan="5">Missed Approach Climb Gradient</th> </tr> <tr> <th>Gnd speed-Kts</th> <th>75</th> <th>100</th> <th>150</th> <th>175</th> </tr> </thead> <tbody> <tr> <td>260'/NM</td> <td>325</td> <td>433</td> <td>650</td> <td>759</td> </tr> </tbody> </table>				Missed Approach Climb Gradient					Gnd speed-Kts	75	100	150	175
Missed Approach Climb Gradient																		
Gnd speed-Kts	75	100	150	175														
260'/NM	325	433	650	759														
RNP AR Apch	Alt Set: hPa	Rwy Elev: 115 hPa	Trans level: FL 200	Trans alt: 19000'														



1. Special Aircraft & Aircrew Authorization Required. 2. RF and GPS capability required.
3. CAUTION: High terrain all quadrants. Do not exceed distance limits in the holding patterns and procedure turns.
4. Procedure not authorized if temperature is below 14°C or above 52°C.
5. DME/DME not authorized.
6. VGSI and descent angle not coincident.
7. Pilot controlled lighting Rwy 02/20 REIL.



Gnd speed-Kts	70	90	100	120	140	160	REIL PAPI-R	<b>intercept and lateral navigation</b>
Glide Path Angle	3.50°	434	557	619	743	867		
FAP to DA	6.2	5:19	4:08	3:43	3:06	2:39		

**State** STRAIGHT-IN LANDING  
RNP 0.30  
DA(H) **4429'** (1141')

**PANS OPS**

A	NA
B	V2.6 km
C	

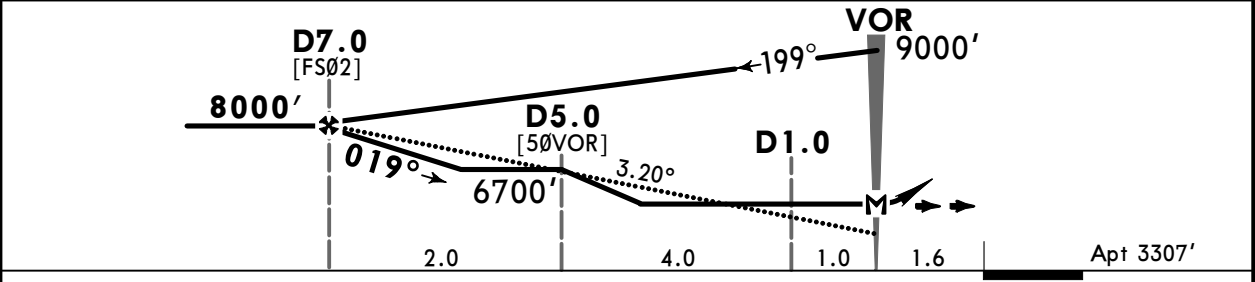
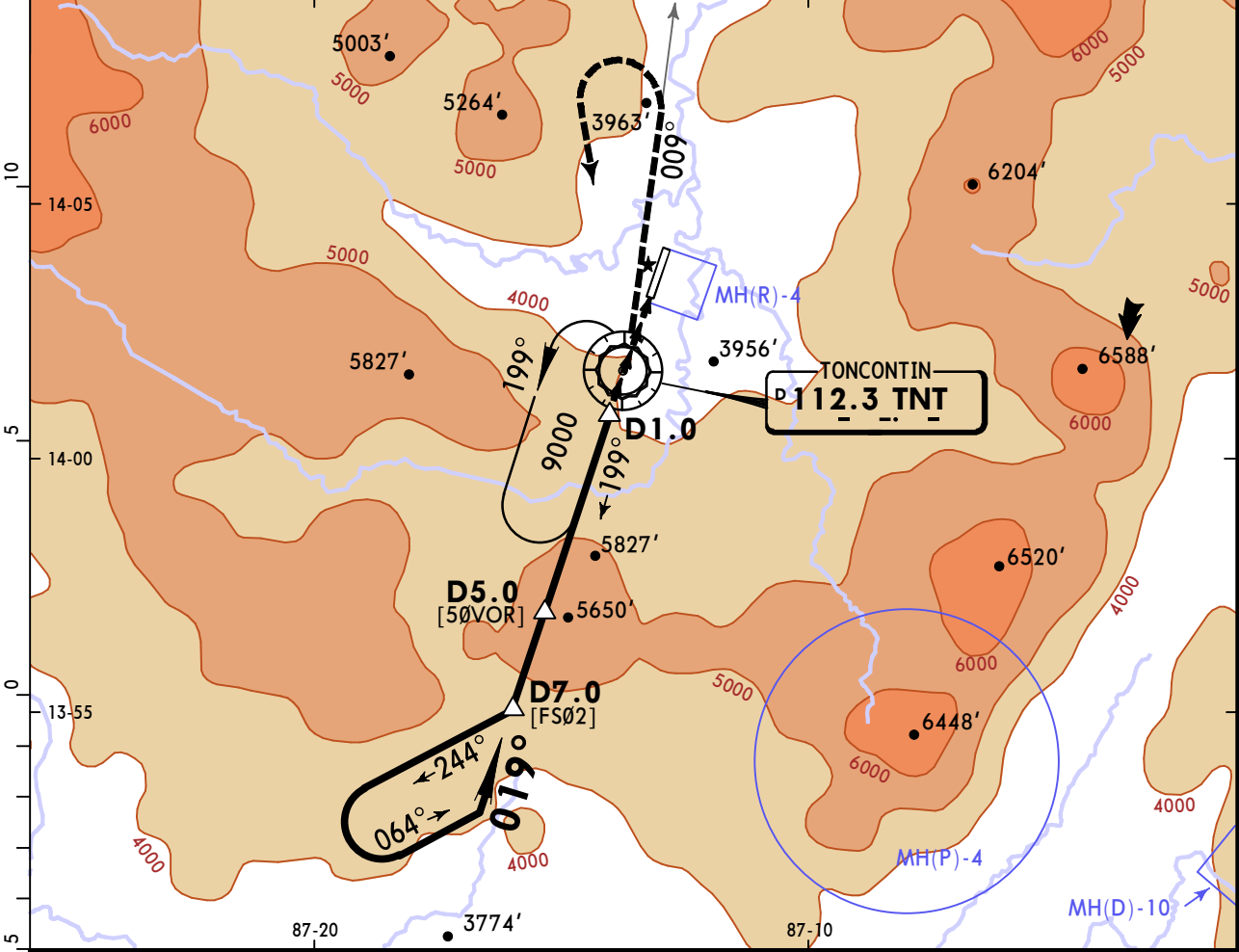




# MHTG/TGU TONCONTIN INTL

# JEPPESSEN TEGUCIGALPA, HONDURAS 19 FEB 21 (13-1) Eff 25 Feb VOR Rwy 02

*ATIS <b>127.75</b>	*TONCONTIN Approach <b>119.1</b>	*TEGUCIGALPA Control <b>126.7</b>	*TONCONTIN Tower <b>118.7</b>	*Ground <b>121.9</b>
VOR TNT <b>112.3</b>	Final Apch Crs <b>019°</b>	D7.0 <b>8000'</b> (4693')	MDA(H) <b>5620'</b> (2313')	Apt Elev 3307' Rwy 3288'
<b>MISSED APCH:</b> Climb outbound on TNT VOR R-009 to 6500' within 6.5 NM, then turn LEFT climbing to a minimum of 9000'. Then return to TNT VOR. Request instructions from ATC.				
Alt Set: hPa    Apt Elev: 115 hPa    Trans level: FL 200    Trans alt: 19000'				
1. DME required. 2. CAUTION: High terrain all quadrants. Do not exceed distance limits in the holding patterns and procedure turns.				



Gnd speed-Kts	70	90	100	120	140	160	Lighting - Refer to Airport Chart	6500' on 112.3 within 6.5 NM
Descent Angle 3.20°	396	510	566	679	793	906		
MAP at VOR or D7.0 to MAP	7.0	6:00	4:40	4:12	3:30	3:00		

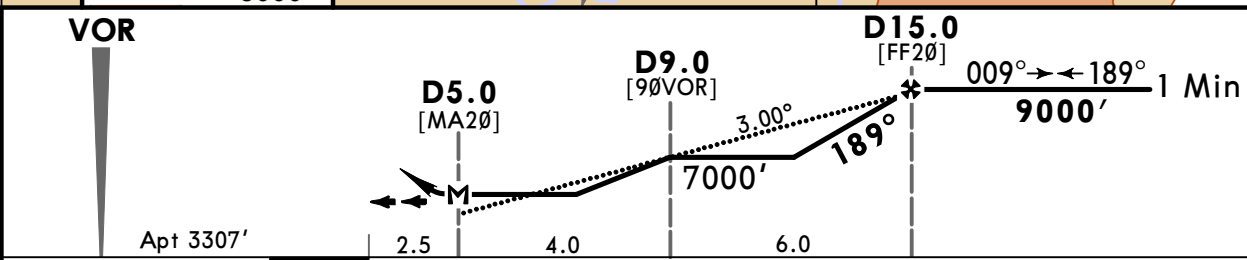
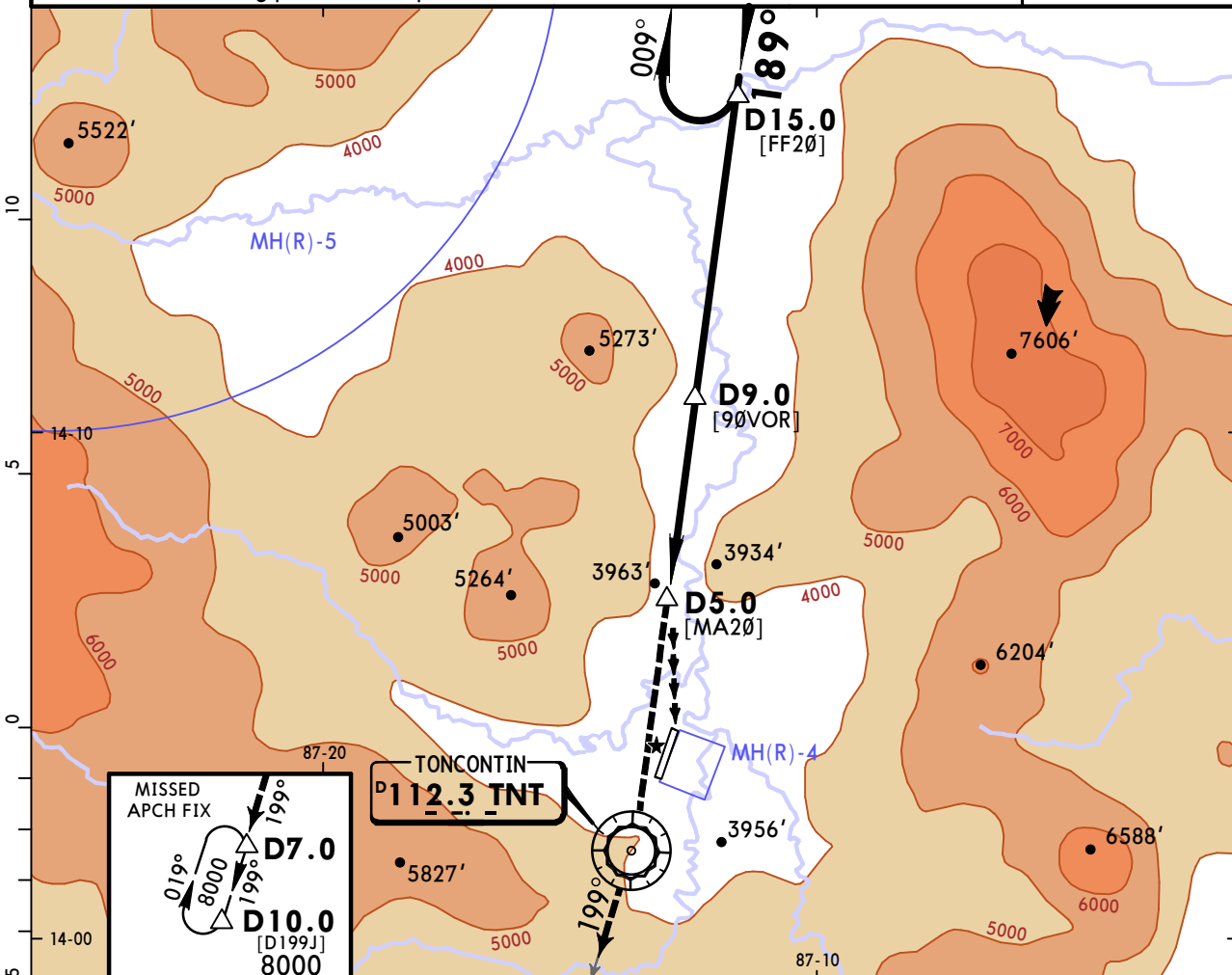
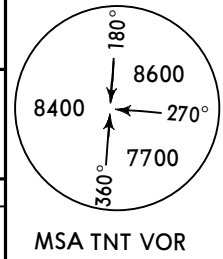
<b>State</b>		CIRCLE-TO-LAND	
Not Authorized East of Runway			
	Max Kts	MDA(H)	
A	100	5620'(2313')	V3.7 km
B	135		
C	180	5620'(2313')	V5.6 km
D	205		

PANS OPS

# MHTG/TGU TONCONTIN INTL

# JEPPESSEN TEGUCIGALPA, HONDURAS 19 FEB 21 (13-2) Eff 25 Feb VOR Rwy 20

*ATIS <b>127.75</b>	*TONCONTIN Approach <b>119.1</b>	*TEGUCIGALPA Control <b>126.7</b>	*TONCONTIN Tower <b>118.7</b>	*Ground <b>121.9</b>
VOR TNT <b>112.3</b>	Final Apch Crs <b>189°</b>	D15.0 <b>9000'</b> (5693')	MDA(H) <b>6000'</b> (2693')	Apt Elev 3307' Rwy 3232'
<b>MISSED APCH: Climb direct TNT VOR, then continue climb outbound on TNT VOR R-199 to 8000', enter holding pattern. Request ATC instructions.</b>				
Alt Set: hPa    Apt Elev: 113 hPa    Trans level: FL 200    Trans alt: 19000'				
1. DME required. 2. CAUTION: High terrain all quadrants. Do not exceed distance limits in the holding patterns and procedure turns.				



Gnd speed-Kts	70	90	100	120	140	160	Lighting - Refer to Airport Chart	↑	D	TNT <b>112.3</b>
Descent Angle 3.00°	372	478	531	637	743	849				
MAP at D5.0 or D15.0 to MAP	10.0	8:34	6:40	6:00	5:00	4:17				

<b>State</b>		CIRCLE-TO-LAND	
Not Authorized East of Runway			
	Max Kts	MDA(H)	
A	100	6000' (2693')	V2 NM
B	135		
C	180	6000' (2693')	V3 NM
D	205		

PANS OPS

## Chart changes since cycle 23-2021

ADD = added chart, REV = revised chart, DEL = deleted chart.

ACT	PROCEDURE IDENT	INDEX	REV DATE	EFF DATE
-----	-----------------	-------	----------	----------

**TEGUCIGALPA, (TONCONTIN INTL - MHTG)**

## **TERMINAL CHART CHANGE NOTICES**

**No Chart Change Notices for Airport MHTG**

SUDU..PONPA..PTA..GBE..DIL..VIE..SAVT