

List of pages in this Trip Kit

Trip Kit Index

Airport Information For DAAG

Terminal Charts For DAAG

Revision Letter For Cycle 24-2021

Change Notices

Notebook

General Information

Location: ALGIERS DZA
ICAO/IATA: DAAG / ALG
Lat/Long: N36° 41.67', E003° 13.02'
Elevation: 82 ft

Airport Use: Public
Daylight Savings: Not Observed
UTC Conversion: -1:00 = UTC
Magnetic Variation: 1.0° E

Fuel Types: 100 Octane (LL), Jet A-1
Customs: Yes
Airport Type: IFR
Landing Fee: Yes
Control Tower: Yes
Jet Start Unit: No
LLWS Alert: No
Beacon: No

Sunrise: 0636 Z
Sunset: 1727 Z

Runway Information

Runway: 09
Length x Width: 11483 ft x 148 ft
Surface Type: asphalt
TDZ-Elev: 56 ft
Lighting: Edge, ALS, TDZ

Runway: 27
Length x Width: 11483 ft x 148 ft
Surface Type: asphalt
TDZ-Elev: 66 ft
Lighting: Edge
Stopway: 1017 ft

Runway: 05
Length x Width: 11483 ft x 197 ft
Surface Type: concrete
TDZ-Elev: 69 ft
Lighting: Edge, Centerline

Runway: 23
Length x Width: 11483 ft x 197 ft
Surface Type: concrete
TDZ-Elev: 80 ft
Lighting: Edge, ALS, Centerline, TDZ

Communication Information

ATIS: 128.525

Algiers Tower: 119.700 Secondary VHF-DF

Algiers Tower: 118.700

Algiers Ground: 121.800

Algiers Approach: 120.800 Secondary

Algiers Approach: 121.400 VHF-DF

DAAG/ALG



ALGIERS, ALGERIA

HOUARI BOUMEDIENE

6 MAR 09

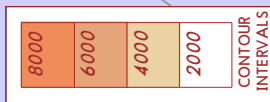
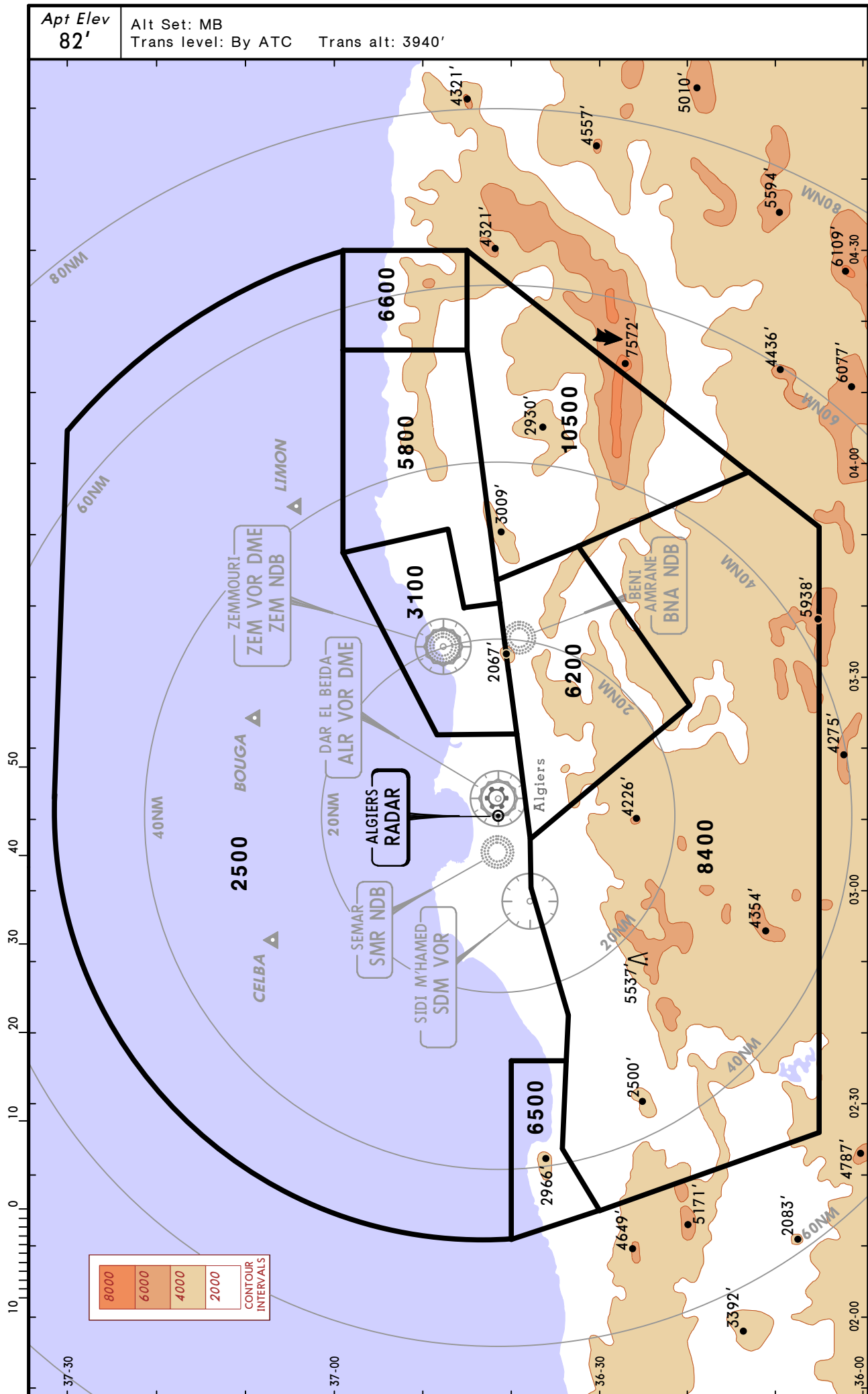
10-1R

Eff 12 Mar

RADAR MINIMUM ALTITUDES

Apt Elev
82'

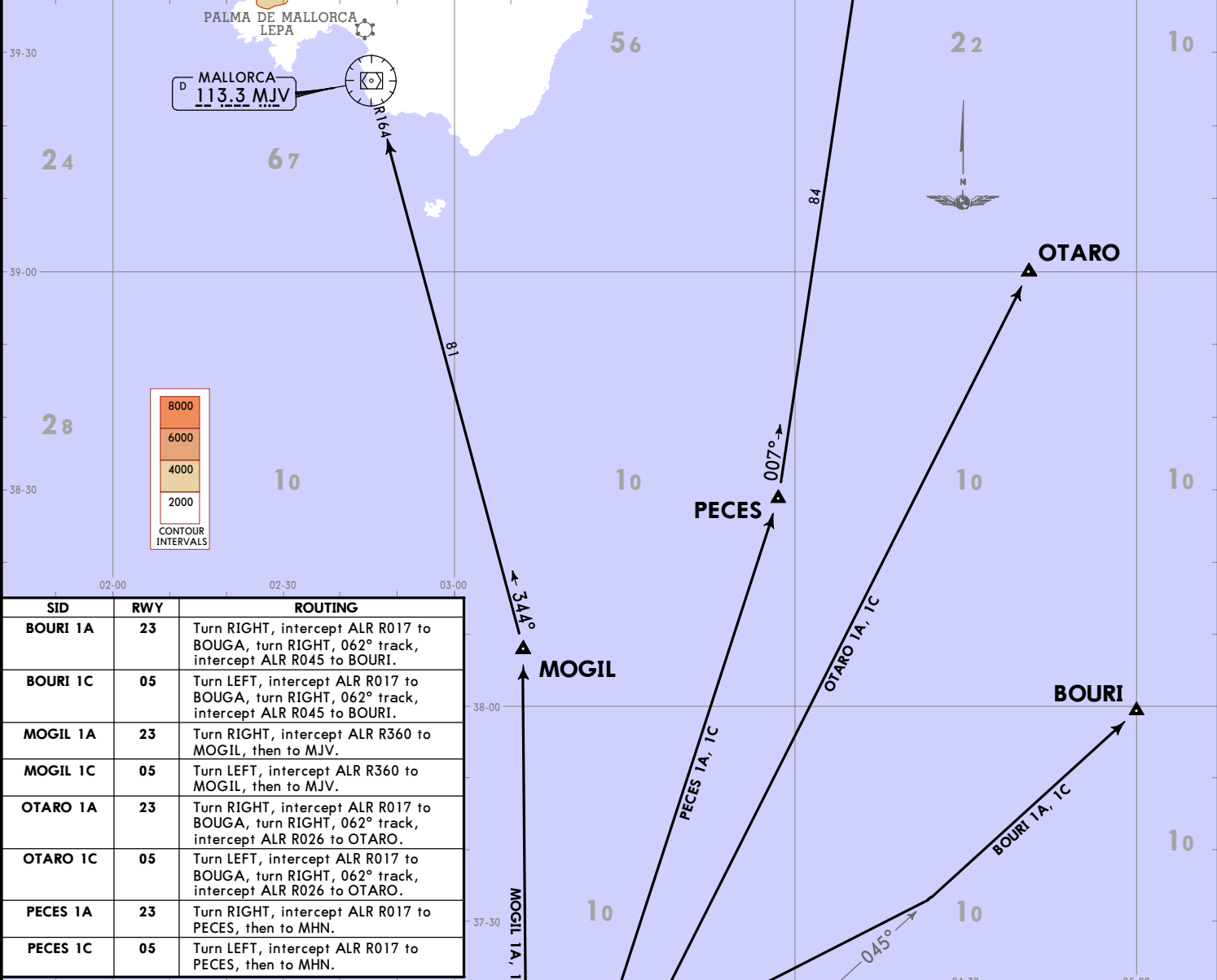
Alt Set: MB
Trans level: By ATC Trans alt: 3940'



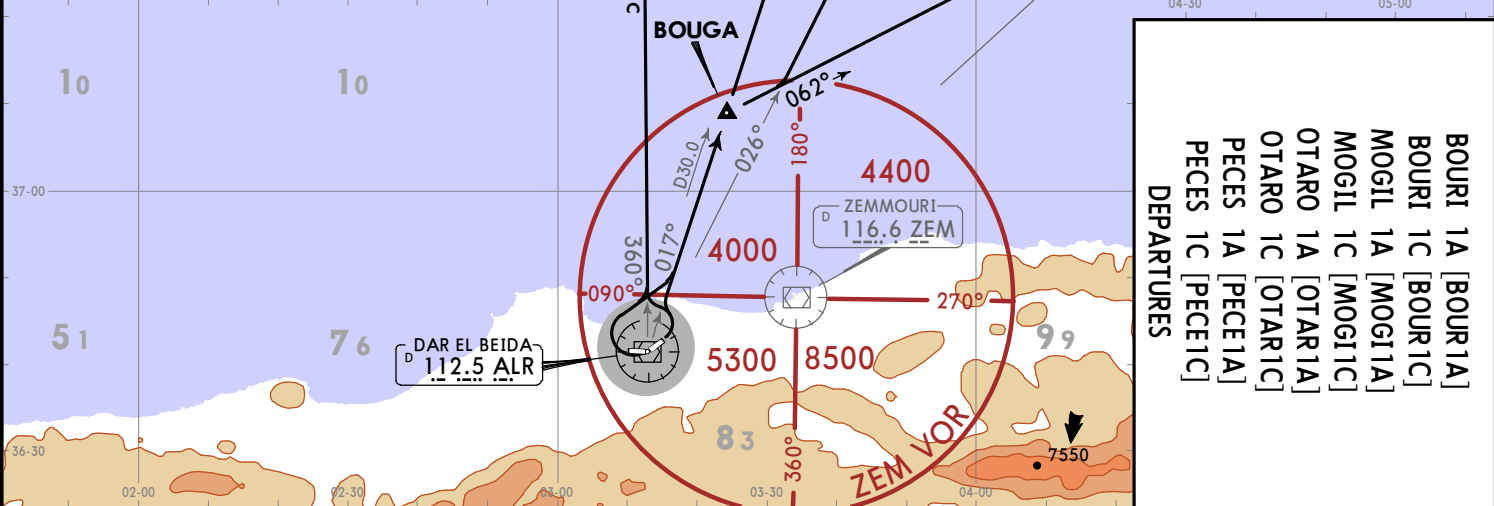
Apt Elev 82 Trans alt: 3940

**BOURI 1A [BOUR1A], BOURI 1C [BOUR1C]
MOGIL 1A [MOGI1A], MOGIL 1C [MOGI1C]
OTARO 1A [OTAR1A], OTARO 1C [OTAR1C]
PECES 1A [PECE1A], PECES 1C [PECE1C]**

DEPARTURES



SID	RWY	ROUTING
BOURI 1A	23	Turn RIGHT, intercept ALR R017 to BOUGA, turn RIGHT, 062° track, intercept ALR R045 to BOURI.
BOURI 1C	05	Turn LEFT, intercept ALR R017 to BOUGA, turn RIGHT, 062° track, intercept ALR R045 to BOURI.
MOGIL 1A	23	Turn RIGHT, intercept ALR R360 to MOGIL, then to MJV.
MOGIL 1C	05	Turn LEFT, intercept ALR R360 to MOGIL, then to MJV.
OTARO 1A	23	Turn RIGHT, intercept ALR R017 to BOUGA, turn RIGHT, 062° track, intercept ALR R026 to OTARO.
OTARO 1C	05	Turn LEFT, intercept ALR R017 to BOUGA, turn RIGHT, 062° track, intercept ALR R026 to OTARO.
PECES 1A	23	Turn RIGHT, intercept ALR R017 to PECES, then to MHN.
PECES 1C	05	Turn LEFT, intercept ALR R017 to PECES, then to MHN.



DEPARTURES

BOURI 1A [BOUR1A]
BOURI 1C [BOUR1C]
MOGIL 1A [MOGI1A]
MOGIL 1C [MOGI1C]
OTARO 1A [OTAR1A]
OTARO 1C [OTAR1C]
PECES 1A [PECE1A]
PECES 1C [PECE1C]

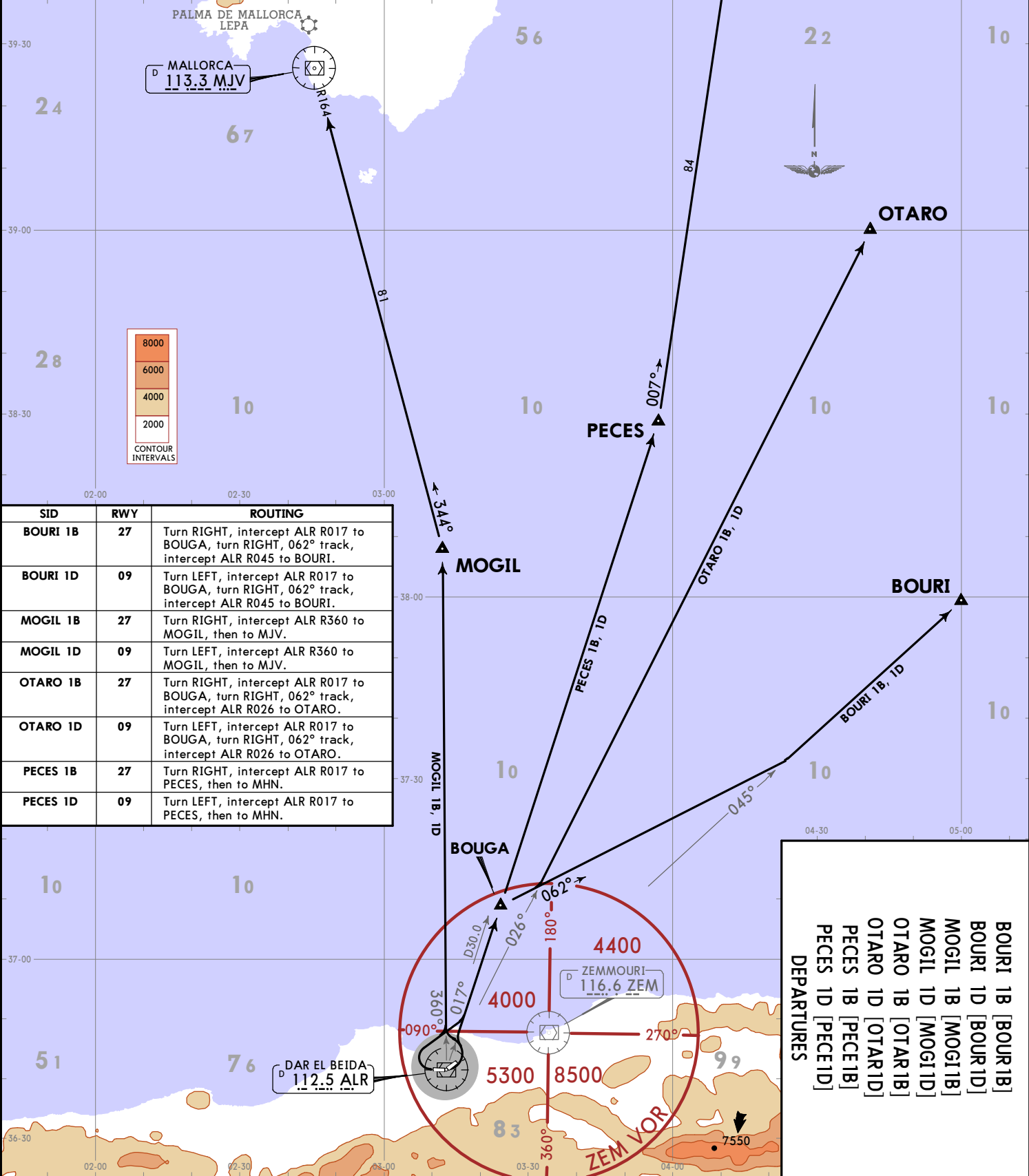
CHANGES: New format: SIDs completely revised.
© JEPPESSEN, 2019. ALL RIGHTS RESERVED.

CHANGES: New format: SIDs completely revised.

Apt Elev 82 Trans alt: 3940

**BOURI 1B [BOUR1B], BOURI 1D [BOUR1D]
 MOGIL 1B [MOGI1B], MOGIL 1D [MOGI1D]
 OTARO 1B [OTAR1B], OTARO 1D [OTAR1D]
 PECES 1B [PECE1B], PECES 1D [PECE1D]**

DEPARTURES



SID	RWY	ROUTING
BOURI 1B	27	Turn RIGHT, intercept ALR R017 to BOUGA, turn RIGHT, 062° track, intercept ALR R045 to BOURI.
BOURI 1D	09	Turn LEFT, intercept ALR R017 to BOUGA, turn RIGHT, 062° track, intercept ALR R045 to BOURI.
MOGIL 1B	27	Turn RIGHT, intercept ALR R360 to MOGIL, then to MJV.
MOGIL 1D	09	Turn LEFT, intercept ALR R360 to MOGIL, then to MJV.
OTARO 1B	27	Turn RIGHT, intercept ALR R017 to BOUGA, turn RIGHT, 062° track, intercept ALR R026 to OTARO.
OTARO 1D	09	Turn LEFT, intercept ALR R017 to BOUGA, turn RIGHT, 062° track, intercept ALR R026 to OTARO.
PECES 1B	27	Turn RIGHT, intercept ALR R017 to PECES, then to MHN.
PECES 1D	09	Turn LEFT, intercept ALR R017 to PECES, then to MHN.

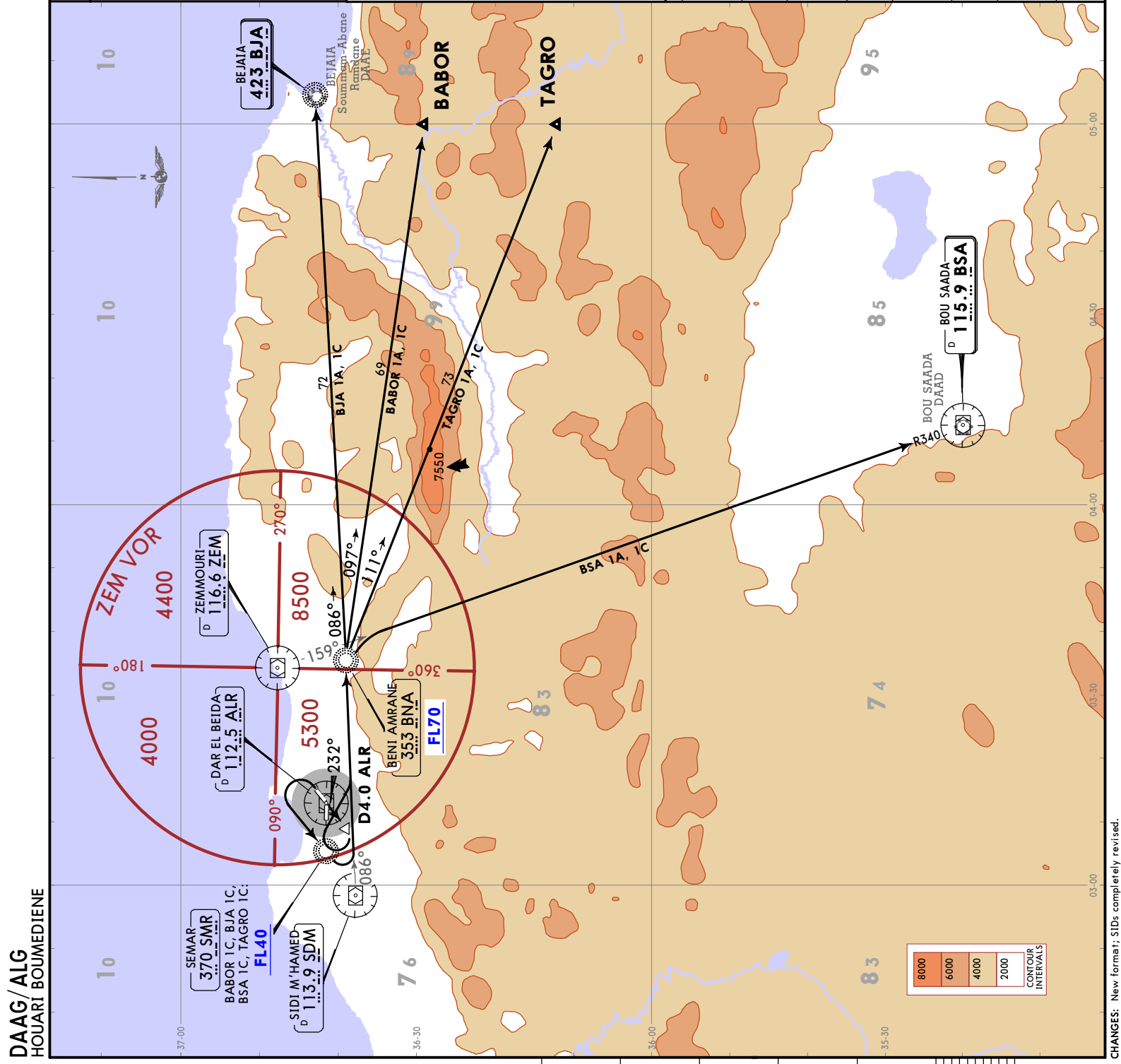
DEPARTURES

BOURI 1B [BOUR1B]
 BOURI 1D [BOUR1D]
 MOGIL 1B [MOGI1B]
 MOGIL 1D [MOGI1D]
 OTARO 1B [OTAR1B]
 OTARO 1D [OTAR1D]
 PECES 1B [PECE1B]
 PECES 1D [PECE1D]

© JEPPESSEN, 2019. ALL RIGHTS RESERVED.

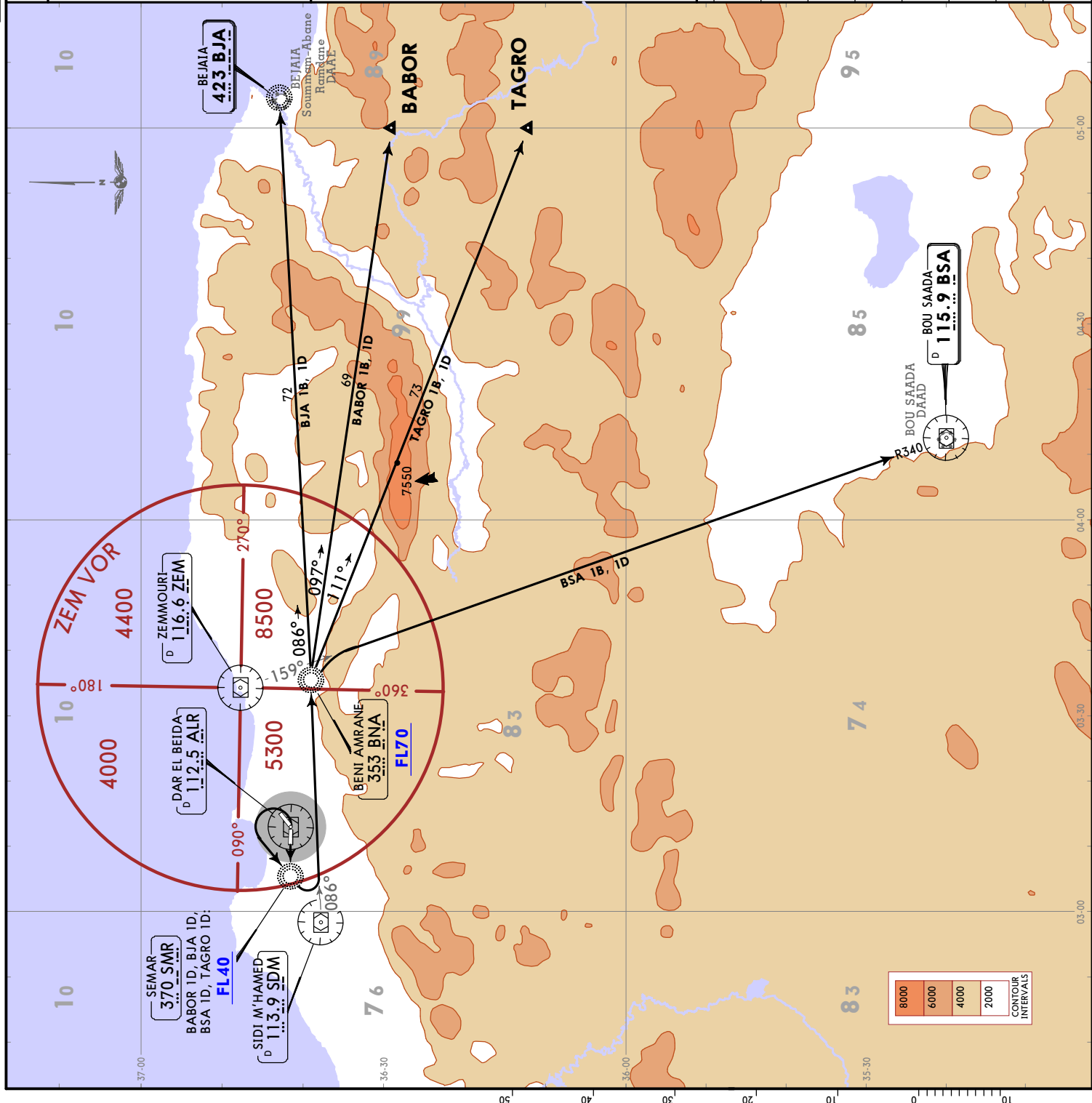
Ap ^t Elev 82	Trans alt: 3940
BABOR 1A [BABO1A] BABOR 1C [BABO1C] BJA 1A [BJA1A] BJA 1C [BJA1C] BSA 1A [BSA1A] BSA 1C [BSA1C] TAGRO 1A [TAGR1A] TAGRO 1C [TAGR1C] DEPARTURES	

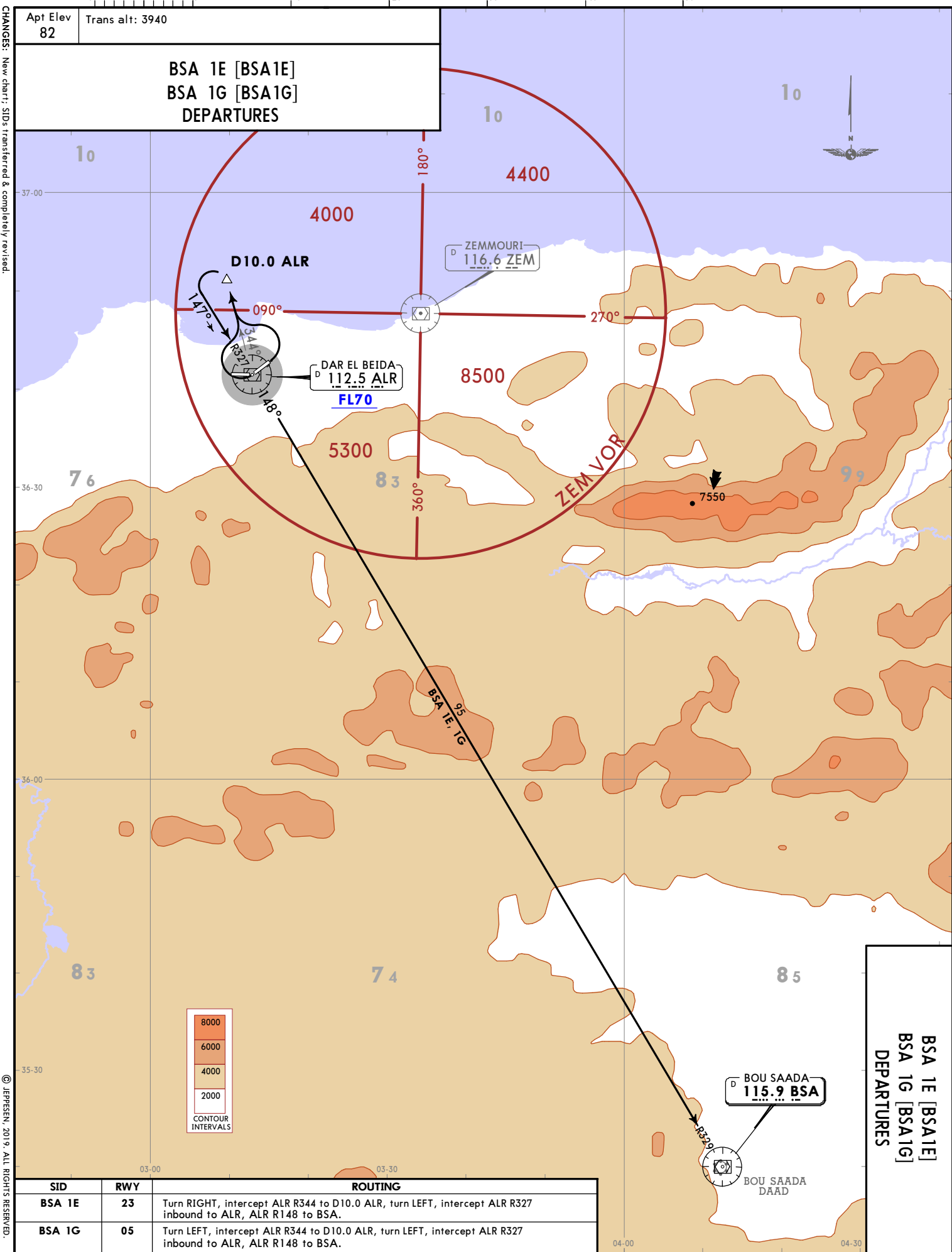
SID	RWY	ROUTING
BABOR 1A	23	To ALR VOR, ALR R232 to D4.0 ALR, turn RIGHT, intercept SDM R086 to BNA, then to BABOR.
BABOR 1C	05	Turn LEFT to SMR, turn LEFT intercept SDM R086 to BNA, then to BABOR.
BJA 1A	23	To ALR VOR, ALR R232 to D4.0 ALR, turn RIGHT, intercept SDM R086 to BNA, then to BJA.
BJA 1C	05	Turn LEFT to SMR, turn LEFT, intercept SDM R086 to BNA, then to BJA.
BSA 1A	23	To ALR, ALR R232 to D4.0 ALR, turn RIGHT, intercept SDM R086 to BNA, then to BSA.
BSA 1C	05	Turn LEFT to SMR, turn LEFT, intercept SDM R086 to BNA, then to BSA.
TAGRO 1A	23	To ALR, ALR R232 to D4.0 ALR, turn RIGHT, intercept SDM R086 to BNA, then to TAGRO.
TAGRO 1C	05	Turn LEFT to SMR, turn LEFT, intercept SDM R086 to BNA, then to TAGRO.



Trans alt: 3940	Apt Elev 82
BABOR 1B [BABO1B] BABOR 1D [BABO1D] BJA 1B [BJA1B] BJA 1D [BJA1D] BSA 1B [BSA1B] BSA 1D [BSA1D] TAGRO 1B [TAGR1B] TAGRO 1D [TAGR1D] DEPARTURES	

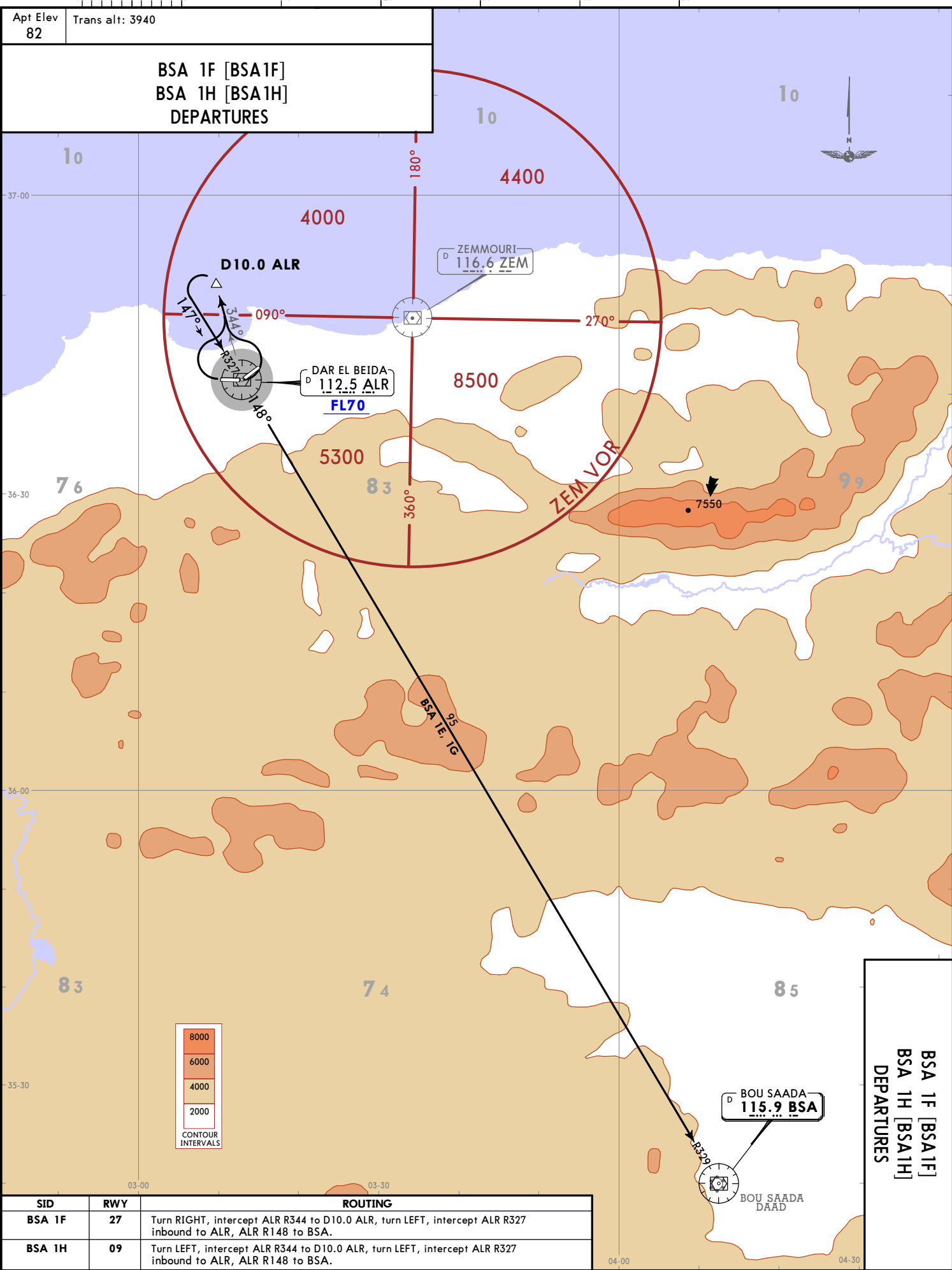
SID	RWY	ROUTING
BABOR 1B	27	To SMR, turn LEFT, intercept SDM R086 to BNA, then to BABOR.
BABOR 1D	09	Turn LEFT to SMR, turn LEFT, intercept SDM R086 to BNA, then to BABOR.
BJA 1B	27	To SMR, turn LEFT, intercept SDM R086 to BNA, then to BJA.
BJA 1D	09	Turn LEFT to SMR, turn LEFT, intercept SDM R086 to BNA, then to BJA.
BSA 1B	27	To SMR, turn LEFT, intercept SDM R086 to BNA, then to BSA.
BSA 1D	09	Turn LEFT to SMR, turn LEFT, intercept SDM R086 to BNA, then to BSA.
TAGRO 1B	27	To SMR, turn LEFT, intercept SDM R086 to BNA, then to TAGRO.
TAGRO 1D	09	Turn LEFT to SMR, turn LEFT, intercept SDM R086 to BNA, then to TAGRO.





CHANGES: New chart: SIDs transferred & completely revised.
© JEPPESSEN, 2019. ALL RIGHTS RESERVED.

CHANGES: New chart: SIDs transferred & completely revised.



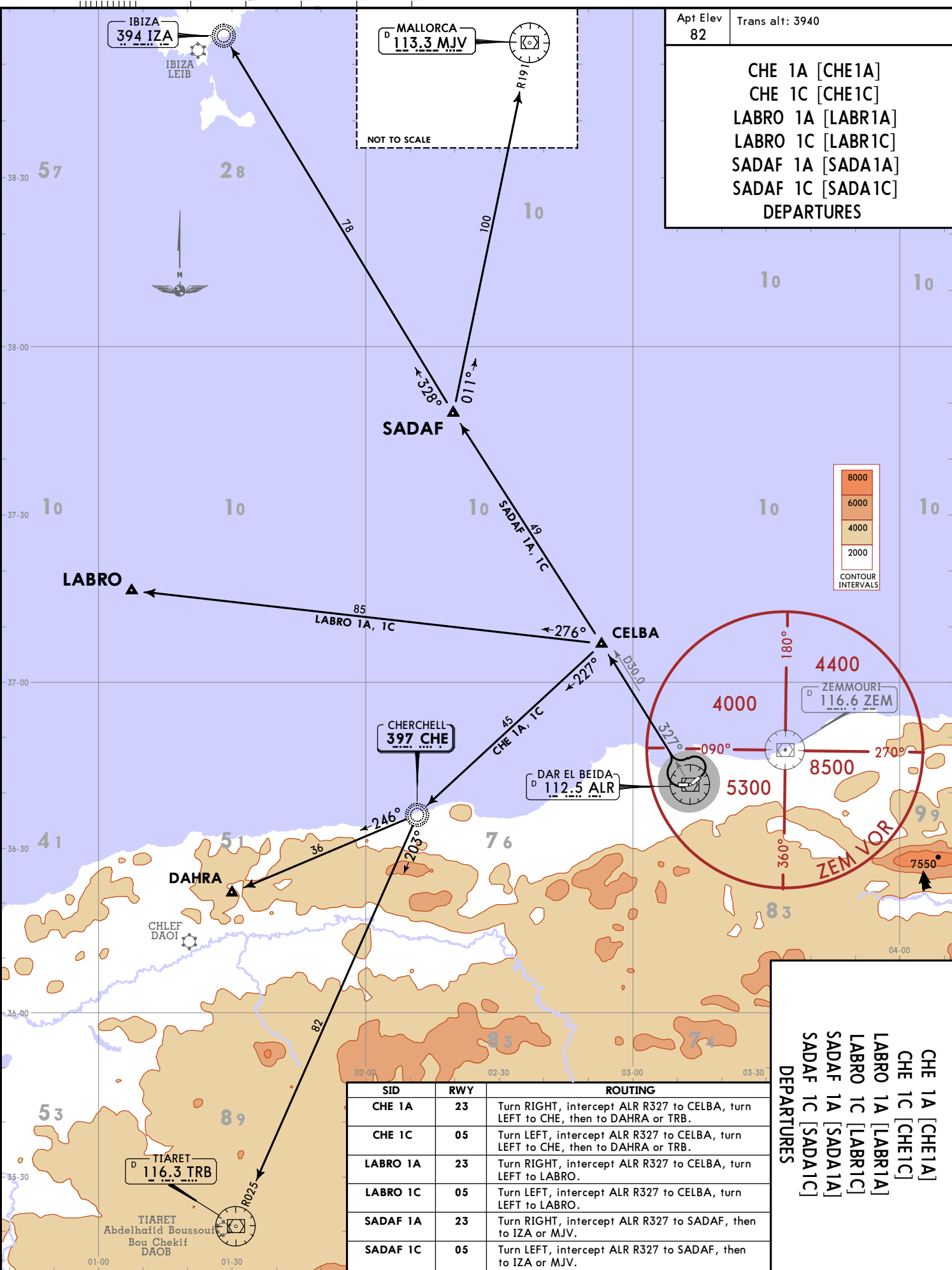
SID	RWY	ROUTING
BSA 1F	27	Turn RIGHT, intercept ALR R344 to D10.0 ALR, turn LEFT, intercept ALR R327 inbound to ALR, ALR R148 to BSA.
BSA 1H	09	Turn LEFT, intercept ALR R344 to D10.0 ALR, turn LEFT, intercept ALR R327 inbound to ALR, ALR R148 to BSA.

BSA 1F [BSA1F]
BSA 1H [BSA1H]
DEPARTURES

DAAG/ALG
HOUARI BOUMEDIENE
JEPPESSEN
 22 FEB 19 10-3E E17 28 Feb
ALGIERS, ALGERIA
SID

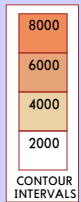
CHANGES: New chart: SIDs transferred & completely revised.

DAAG/ALG
HOUARI BOUMEDIENE



Apt Elev 82 Trans alt: 3940

CHE 1A [CHE1A]
CHE 1C [CHE1C]
LABRO 1A [LABR1A]
LABRO 1C [LABR1C]
SADAFA 1A [SADA1A]
SADAFA 1C [SADA1C]
DEPARTURES



SID	RWY	ROUTING
CHE 1A	23	Turn RIGHT, intercept ALR R327 to CELBA, turn LEFT to CHE, then to DAHRA or TRB.
CHE 1C	05	Turn LEFT, intercept ALR R327 to CELBA, turn LEFT to CHE, then to DAHRA or TRB.
LABRO 1A	23	Turn RIGHT, intercept ALR R327 to CELBA, turn LEFT to LABRO.
LABRO 1C	05	Turn LEFT, intercept ALR R327 to CELBA, turn LEFT to LABRO.
SADAFA 1A	23	Turn RIGHT, intercept ALR R327 to SADAFA, then to IZA or MJV.
SADAFA 1C	05	Turn LEFT, intercept ALR R327 to SADAFA, then to IZA or MJV.

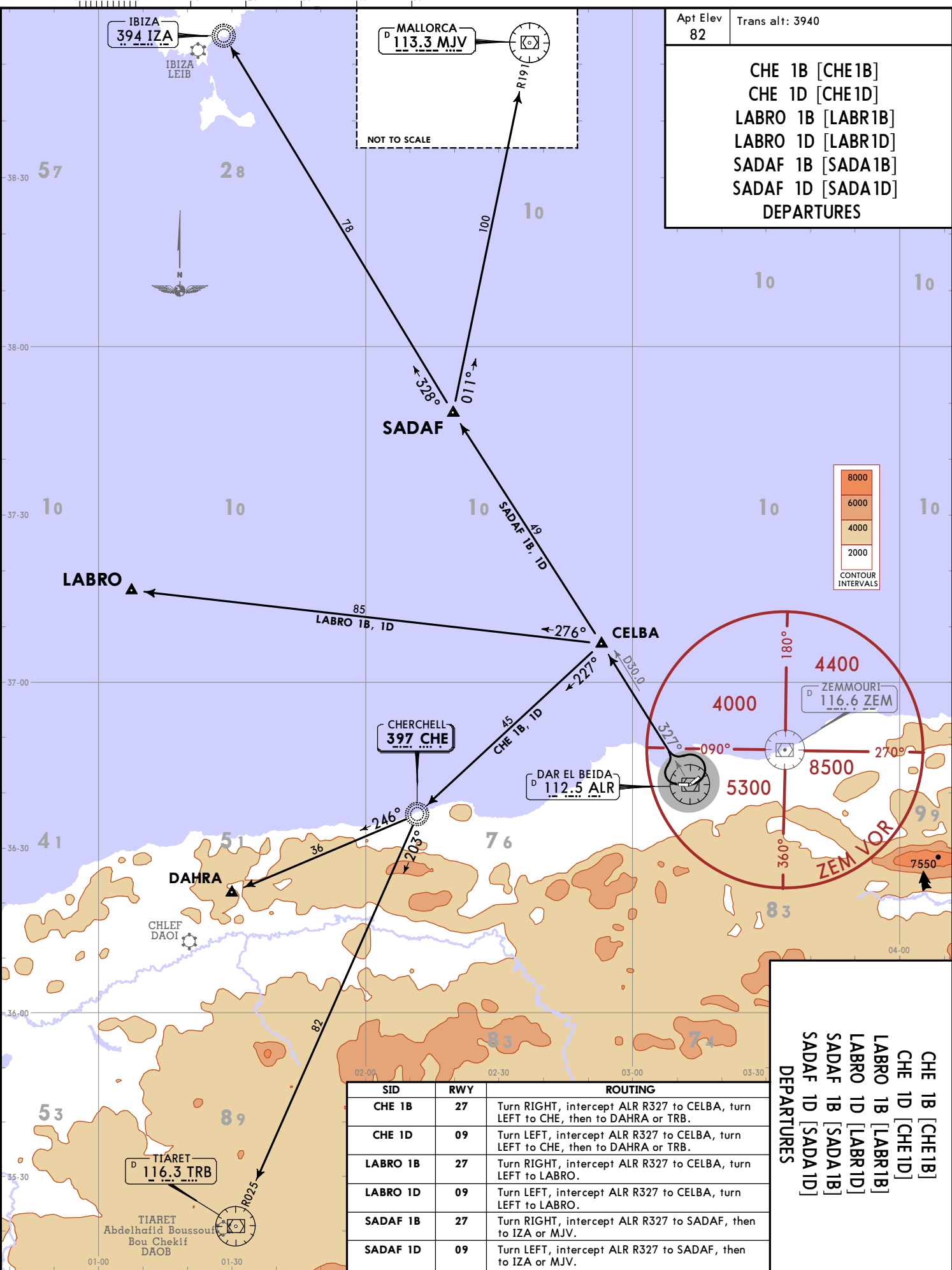
DEPARTURES

CHE 1A [CHE1A]
CHE 1C [CHE1C]
LABRO 1A [LABR1A]
LABRO 1C [LABR1C]
SADAFA 1A [SADA1A]
SADAFA 1C [SADA1C]

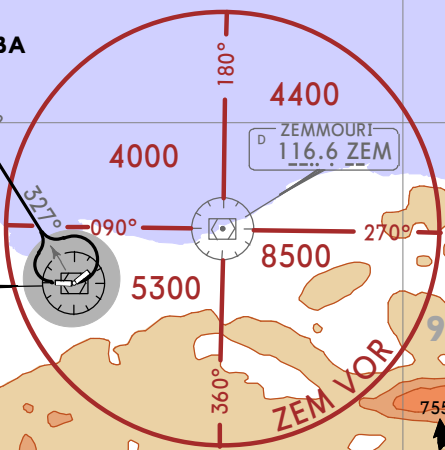
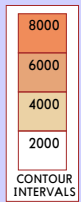
JEPPESSEN ALGIERS, ALGERIA
SID
22 FEB 19 10-3E EFF 28 Feb

© JEPPESSEN, 2019. ALL RIGHTS RESERVED.

CHANGES: New chart: SIDs transferred & completely revised.



Apt Elev 82	Trans alt: 3940
CHE 1B [CHE1B] CHE 1D [CHE1D] LABRO 1B [LABR1B] LABRO 1D [LABR1D] SADAFA 1B [SADA1B] SADAFA 1D [SADA1D] DEPARTURES	



SID	RWY	ROUTING
CHE 1B	27	Turn RIGHT, intercept ALR R327 to CELBA, turn LEFT to CHE, then to DAHRA or TRB.
CHE 1D	09	Turn LEFT, intercept ALR R327 to CELBA, turn LEFT to CHE, then to DAHRA or TRB.
LABRO 1B	27	Turn RIGHT, intercept ALR R327 to CELBA, turn LEFT to LABRO.
LABRO 1D	09	Turn LEFT, intercept ALR R327 to CELBA, turn LEFT to LABRO.
SADAFA 1B	27	Turn RIGHT, intercept ALR R327 to SADAFA, then to IZA or MJV.
SADAFA 1D	09	Turn LEFT, intercept ALR R327 to SADAFA, then to IZA or MJV.

DEPARTURES

CHE 1B [CHE1B]
 CHE 1D [CHE1D]
 LABRO 1B [LABR1B]
 LABRO 1D [LABR1D]
 SADAFA 1B [SADA1B]
 SADAFA 1D [SADA1D]

DAAG/ALG
 HOUARI BOUMEDIENE
 22 FEB 19 10:30
 JEPPESSEN
 EFF 28 Feb
 ALGIERS, ALGERIA
 SID

© JEPPESSEN, 2019. ALL RIGHTS RESERVED.

DAAG/ALG

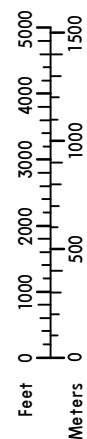
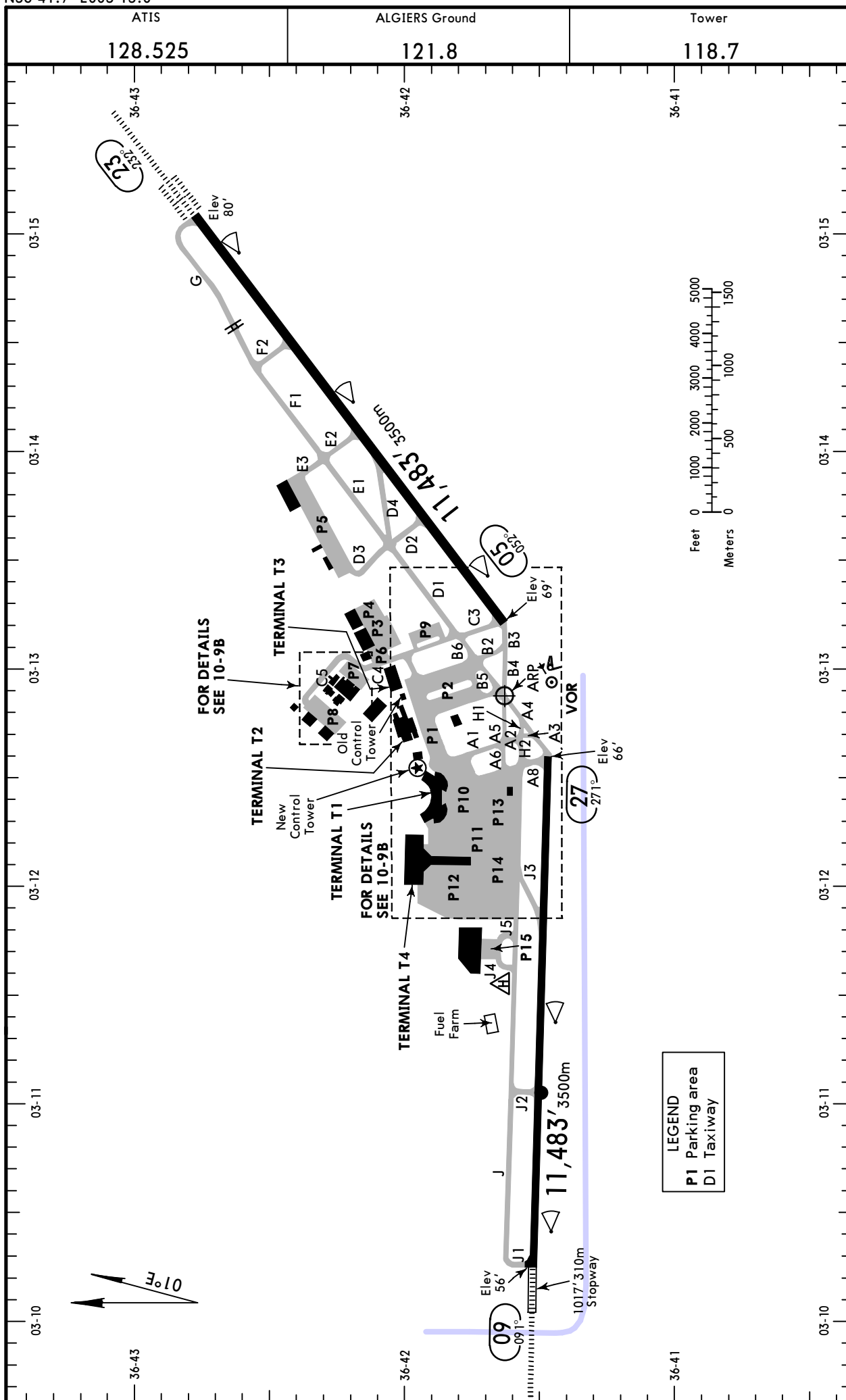
Apt Elev 82'
N36 41.7 E003 13.0



22 OCT 21 (10-9)

ALGIERS, ALGERIA

HOUARI BOUMEDIENE



LEGEND
 P1 Parking area
 D1 Taxiway

CHANGES: Stands E1 thru E12 withdrawn. CAT II holding positions.

© JEPPESEN, 1999, 2021. ALL RIGHTS RESERVED.

DAAG/ALG



ALGIERS, ALGERIA

HOUARI BOUMEDIENE

22 OCT 21 (10-9A)

GENERAL
 Birds.
 Rwy 23 approved for CAT II/III operations, special aircrew and acft certification required.
 In VMC both runways may be used simultaneously (landing rwy 09 with take-off rwy 05 & landing rwy 23 with take-off rwy 27).
 Rwy 23 & 27 right-hand circuit.

RWY	ADDITIONAL RUNWAY INFORMATION				USABLE LENGTHS		TAKE-OFF	WIDTH
					Threshold	Glide Slope		
05	HIRL (60m)	CL (15m)	PAPI-L (3.06°)	RVR				197'
23	HIRL (60m)	CL (15m)	HIALS-II TDZ ①	HST-D4 RVR		10,358' 3157m		60m
① PAPI-L (3.03°)								
09	HIRL (60m)	HIALS TDZ	PAPI-L (3.03°)	HST-J3 RVR		10,499' 3200m		148'
27	HIRL (60m)	PAPI-L (3.00°)		RVR		10,512' 3204m		45m

(This section is intentionally left blank in the original chart.)

TAKE-OFF	
AIR CARRIER (JAA)	
Rwy 05/23 LVP must be in force RL, CL & TDZ, MID, Rollout RVR req	All Rwys RL and CL or RL and RCLM
A	
B	175m
C	
D	200m

DAAG/ALG



ALGIERS, ALGERIA
HOUARI BOUMEDIENE

INS COORDINATES			
STAND No.	COORDINATES	STAND No.	COORDINATES
C1 thru C3	N36 42.0 E003 13.0	S22, S23	N36 41.6 E003 12.0
C4 thru C6	N36 42.0 E003 12.9	T1A thru T1C	N36 41.9 E003 12.0
C7 thru C9	N36 41.9 E003 12.8	T2, T3	N36 41.9 E003 11.9
N1, N2	N36 42.2 E003 13.0	T4 thru T7	N36 41.8 E003 11.9
N3	N36 42.2 E003 12.9	T8 thru T11	N36 41.7 E003 11.9
S1, S2	N36 41.9 E003 13.2	W1	N36 41.9 E003 12.6
S3	N36 41.9 E003 13.1	W2	N36 41.9 E003 12.5
S4	N36 42.0 E003 13.1	W3A thru W5	N36 41.8 E003 12.5
S6, S7	N36 41.9 E003 13.1	W6A thru W8	N36 41.8 E003 12.4
S8	N36 41.8 E003 13.1	W9 thru W10C	N36 41.8 E003 12.3
S9, S10	N36 41.9 E003 13.0	W11A thru W12	N36 41.9 E003 12.3
S11, S12	N36 41.8 E003 13.0	W13 thru W15	N36 41.9 E003 12.2
S13, S14	N36 41.7 E003 12.4	W16 thru W19	N36 41.8 E003 12.2
S15	N36 41.7 E003 12.3	W20, W21	N36 41.7 E003 12.1
S16 thru S18	N36 41.6 E003 12.3	W22A thru W24A	N36 41.8 E003 12.1
S19	N36 41.6 E003 12.2	W24B thru W25B	N36 41.9 E003 12.1
S20, S21	N36 41.6 E003 12.1	W25C	N36 41.9 E003 12.0

DAAG/ALG


JEPPESEN

5 NOV 21

10-9S

Standard
ALGIERS, ALGERIA
HOUARI BOUMEDIENE

STRAIGHT-IN RWY		A	B	C	D
05	①VOR	540' (468') R1500m	540' (468') R1500m	540' (468') R2200m	540' (468') R2200m
09	ILS FULL	256' (200') R550m ② V800m	266' (210') R550m ② V800m	276' (220') R550m ② V800m	286' (230') R550m ② V800m
	ALS out	R1200m	R1200m	R1200m	R1200m
	①LOC	560' (504') 2300m	560' (504') 2300m	560' (504') 2400m	560' (504') 2400m
	①VOR	560' (504') 2300m	560' (504') 2300m	560' (504') 2400m	560' (504') 2400m
23	ILS FULL TDZ or CL out ALS out	282' (200') R550m R550m ② R1200m	292' (210') R550m R550m ② R1200m	302' (220') R550m R550m ② R1200m	312' (230') R550m R550m ② R1200m
	①LOC	470' (388') R1100m	470' (388') R1100m	470' (388') R1100m	470' (388') R1100m
	ALS out	R1500m	R1500m	R1800m	R1800m
	①VOR	490' (408') R1200m	490' (408') R1200m	490' (408') R1200m	490' (408') R1200m
	ALS out	R1500m	R1500m	R1900m	R1900m
27	ILS	266' (200') R1200m	276' (210') R1200m	286' (220') R1200m	296' (230') R1200m
	①LOC	570' (504') 2300m	570' (504') 2300m	570' (504') 2400m	570' (504') 2400m
	①VOR	520' (454') 2400m	520' (454') 2400m	520' (454') 2800m	520' (454') 3200m

① Continuous Descent Final Approach.

② RVR 750m when a Flight Director or Autopilot or HUD to DA is not used.

DAAG/ALG



Standard
ALGIERS, ALGERIA
 HOUARI BOUMEDIENE

CIRCLE-TO-LAND ⓘ	100 KT	135 KT	180 KT	205 KT
	650' (568') V2500m	720' (638') V2900m	1370' (1288') V5000m	1370' (1288') V5000m
after ILS, LOC, VOR Rwy 23 and VOR Rwy 05	680' (598') V2700m	780' (698') V3200m	1440' (1358') V5000m	1960' (1878') V5000m

ⓘ Not authorized South of airport.

TAKE-OFF RWY 05, 23

	LVP must be in force RL, CL & TDZ, MID, Rollout RVR req	RL and CL or RCLM (DAY only)
A	175m	500m
B		
C		
D		

TAKE-OFF RWY 09, 27

	RL and CL or RCLM (DAY only)
A	500m
B	
C	
D	

DAAG/ALG
HOUARI BOUMEDIENE

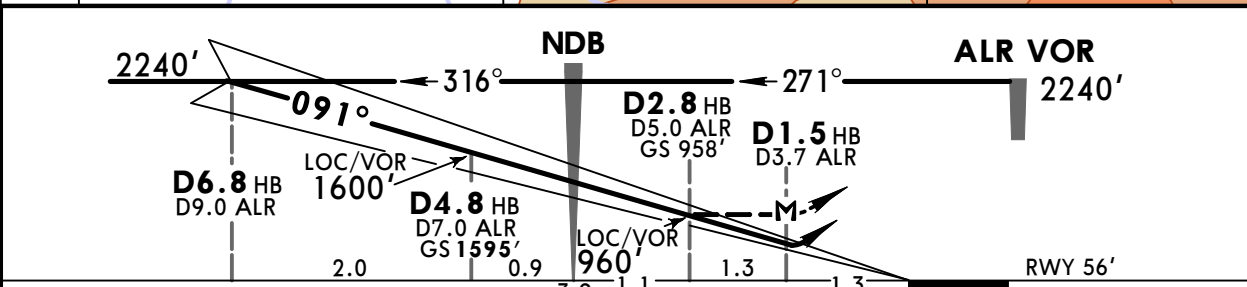
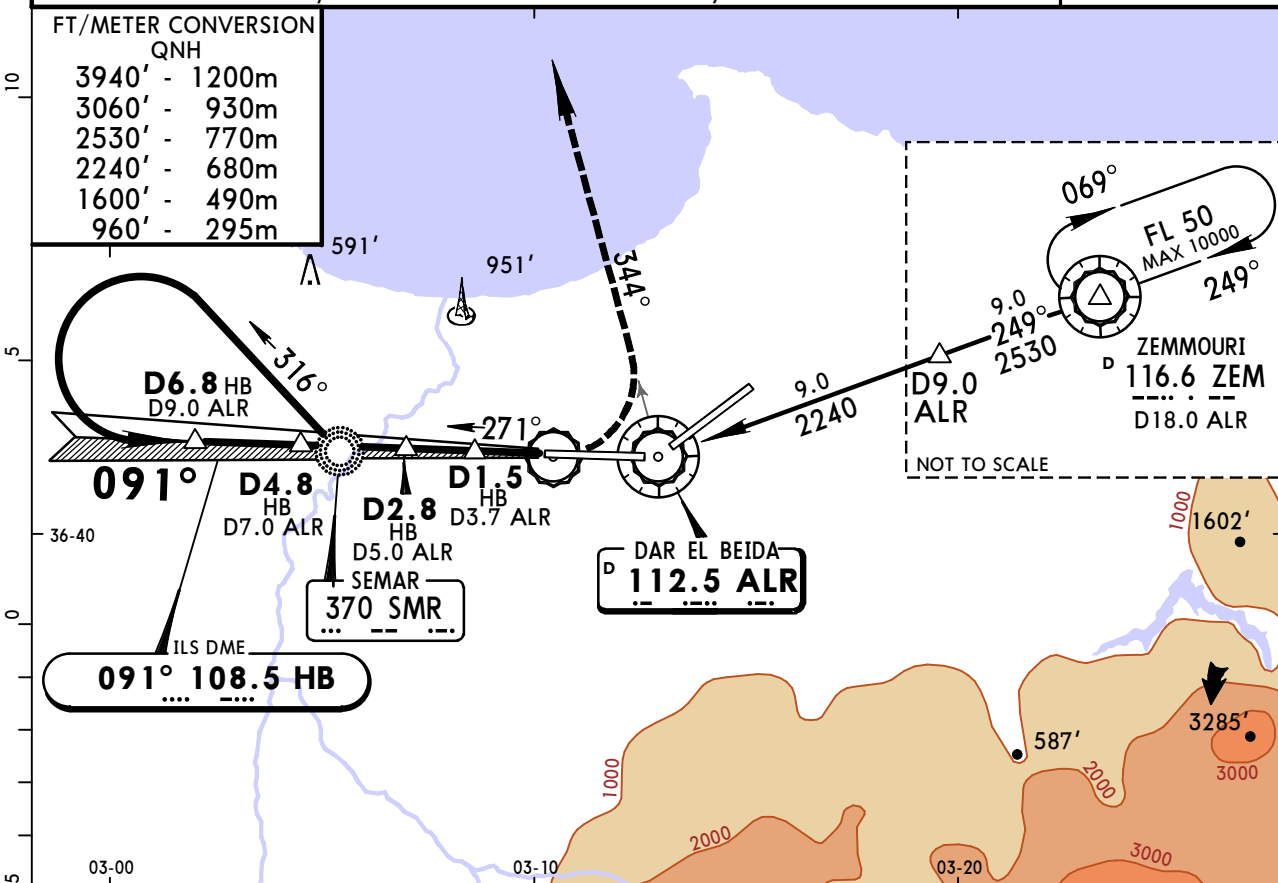
JEPPESSEN
20 SEP 19 **(11-1)**

ALGIERS, ALGERIA
VOR DME ILS or
VOR DME Rwy 09

ATIS 128.52		ALGIERS Approach (R) 121.4		ALGIERS Tower 118.7		Ground 121.8	
BRIEFING STRIP™	LOC HB 108.5	Final Apch Crs 091°	GS D4.8 HB 1595' (1539')	ILS DA(H) Refer to Minimums		Apt Elev 82'	
	VOR ALR 112.5		Minimum Alt D6.8 HB 2240' (2184')	VOR MDA(H) 560' (504')		Rwy 56'	
MISSED APCH: As soon as possible turn LEFT to climb on R-344 ALR to 3060' and as directed.							
Alt Set: hPa		Rwy Elev: 2 hPa		Trans level: By ATC		Trans alt: 3940'	

FT/METER CONVERSION
QNH

3940'	-	1200m
3060'	-	930m
2530'	-	770m
2240'	-	680m
1600'	-	490m
960'	-	295m



Gnd speed-Kts	70	90	100	120	140	160	HIALS PAPI As soon as possible 3060' on 112.5 ALR LT R-344						
ILS GS or LOC or VOR Descent Angle	3.00°							372	478	531	637	743	849
MAP at D1.5 HB/D3.7 ALR													

ILS DA(H) A: 256' (200') C: 276' (220') B: 266' (210') D: 286' (230')		LOC (GS out) or VOR MDA(H) 560' (504')		CIRCLE-TO-LAND Not authorized South of airport	
FULL		ALS out		ALS out	
A			2300m		Max Kts 100
B					135
C	RVR 550m VIS 800m	RVR 1200m		2500m	
D			2400m		180
					205
					650' (568') 720' (638') 1370' (1288') 5000m

DAAG/ALG
HOUARI BOUMEDIENE

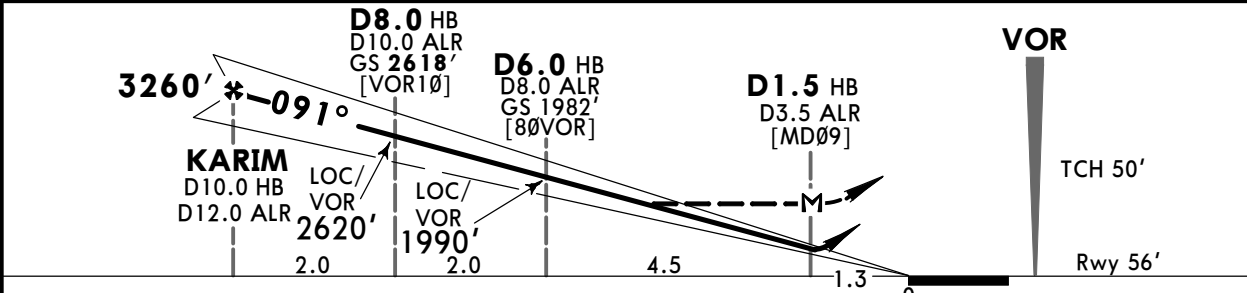
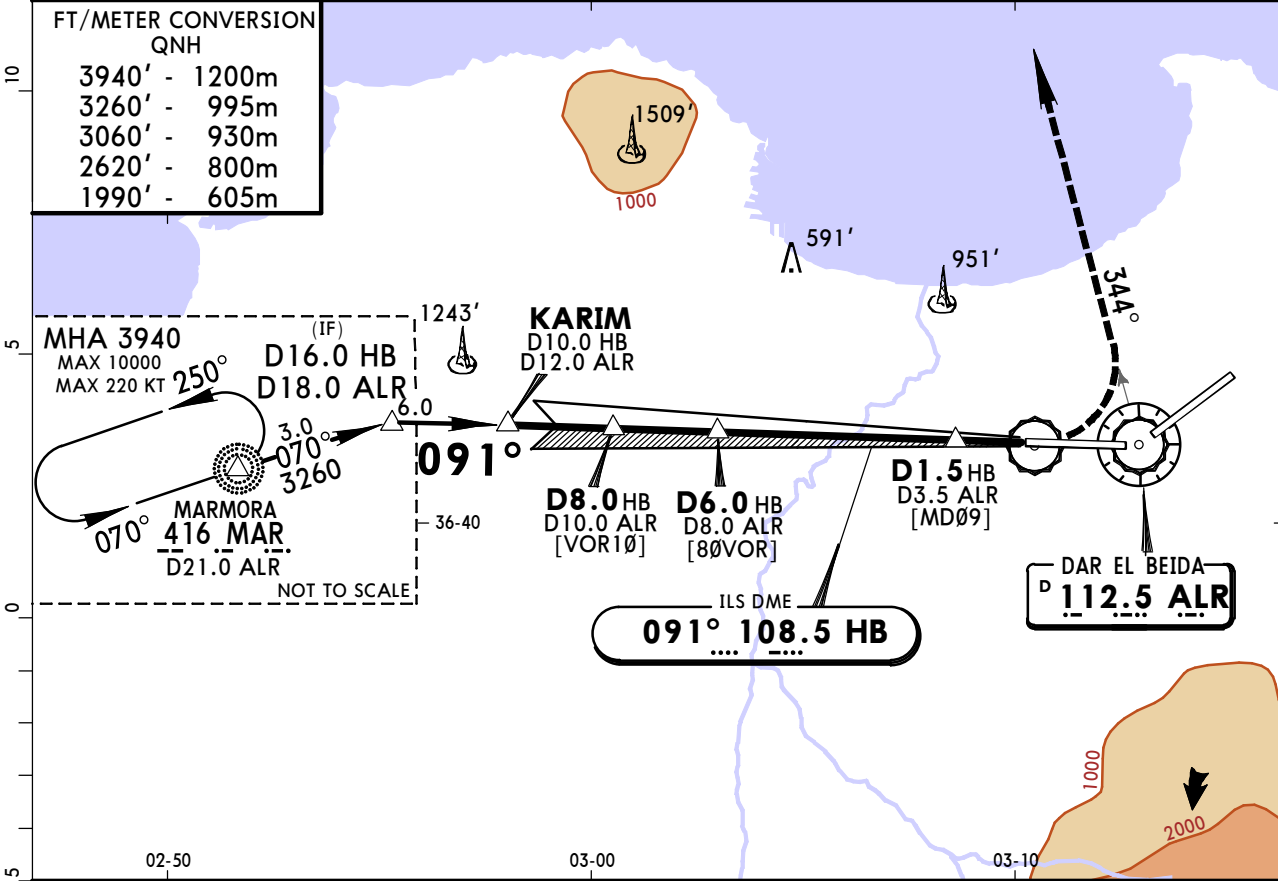
JEPPESEN
20 SEP 19 (11-2)

ALGIERS, ALGERIA
NDB VOR DME ILS or
NDB VOR DME Rwy 09

ATIS 128.52		ALGIERS Approach (R) 121.4		ALGIERS Tower 118.7		Ground 121.8	
BRIEFING STRIP™	LOC HB 108.5	Final Apch Crs 091°	GS D8.0 2618' (2562')	ILS DA(H) Refer to Minimums	Apt Elev 82' Rwy 56'		
	VOR ALR 112.5		Minimum Alt KARIM 3260' (3204')	VOR MDA(H) 560' (504')			
MISSED APCH: Turn LEFT to climb on R-344 to 3060' and as directed.							
Alt Set: hPa		Rwy Elev: 2 hPa		Trans level: By ATC		Trans alt: 3940'	
							MSA MAR NDB

FT/METER CONVERSION
QNH

3940'	1200m
3260'	995m
3060'	930m
2620'	800m
1990'	605m



Gnd speed-Kts	70	90	100	120	140	160		3060' ALR ← on 112.5 R-344 LT	
ILS GS	3.00°	372	478	531	637	743			849
LOC or VOR Descent Angle	3.01°	373	479	532	639	745			852

MAP at D1.5 HB/D3.5 ALR

STRAIGHT-IN LANDING RWY 09				CIRCLE-TO-LAND	
ILS DA(H) A: 256' (200') C: 276' (220') B: 266' (210') D: 286' (230')		LOC (GS out) or VOR MDA(H) 560' (504')		Not authorized South of airport	
FULL		ALS out		Max Kts	MDA(H)
RVR 550m VIS 800m		RVR 1200m			
A				100	650' (568') 2500m
B				135	720' (638') 2900m
C				180	1370' (1288') 5000m
D				205	

PANS OPS

CHANGES: DME fix designation.

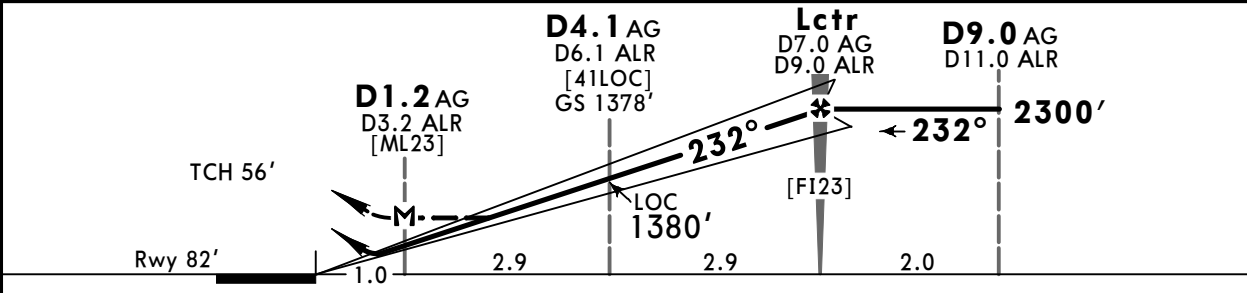
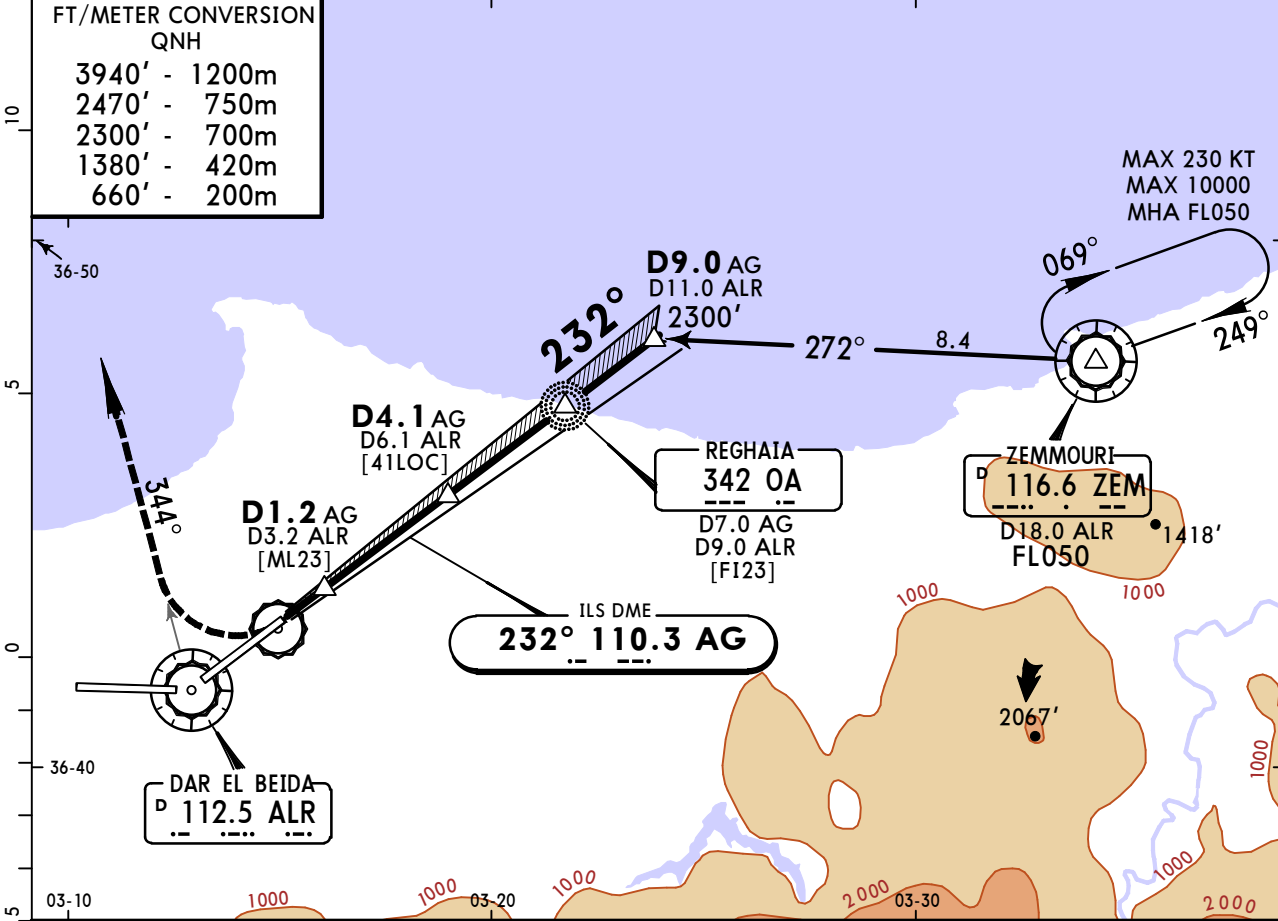
DAAG/ALG HOUARI BOUMEDIENE

JEPPESSEN
5 NOV 21 **(11-3)**

ALGIERS, ALGERIA ILS or LOC Rwy 23

ATIS 128.525		ALGIERS Approach (R) 121.4		ALGIERS Tower 118.7		Ground 121.8	
LOC AG 110.3	Final Apch Crs 232°	Lctr 2300' (2218')		ILS DA(H) Refer to Minimums	Apt Elev 82' Rwy 82'		
MISSED APCH: Climb STRAIGHT AHEAD to 660', then turn RIGHT to climb and follow R-344 ALR, maintain 2470' and as directed.							
Alt Set: hPa		Rwy Elev: 3 hPa		Trans level: By ATC		Trans alt: 3940'	

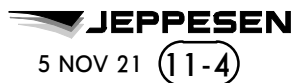
FT/METER CONVERSION QNH	
3940'	1200m
2470'	750m
2300'	700m
1380'	420m
660'	200m



Gnd speed-Kts	70	90	100	120	140	160	HIALS-II PAPI PAPI	660' ↑ 2470' → onto 112.5 RT R-344	
ILS GS or LOC Descent Angle	3.00°	372	478	531	637	743			849
MAP at D1.2 AG/D3.2 ALR									

STRAIGHT-IN LANDING RWY 23				CIRCLE-TO-LAND	
ILS DA(H) A: 282' (200') C: 302' (220') B: 292' (210') D: 312' (230')		LOC (GS out) MDA(H) 470' (388')		Not authorized South of airport	
	FULL	TDZ or CL out	ALS out	ALS out	Max Kts
A					100
B	RVR 550m VIS 800m	RVR 720m VIS 800m	1200m	1000m	135
C				RVR 1500m VIS 1600m	180
D					205
					MDA(H)
					680' (598')
					780' (698')
					1440' (1358')
					1960' (1878')

DAAG/ALG
HOUARI BOUMEDIENE

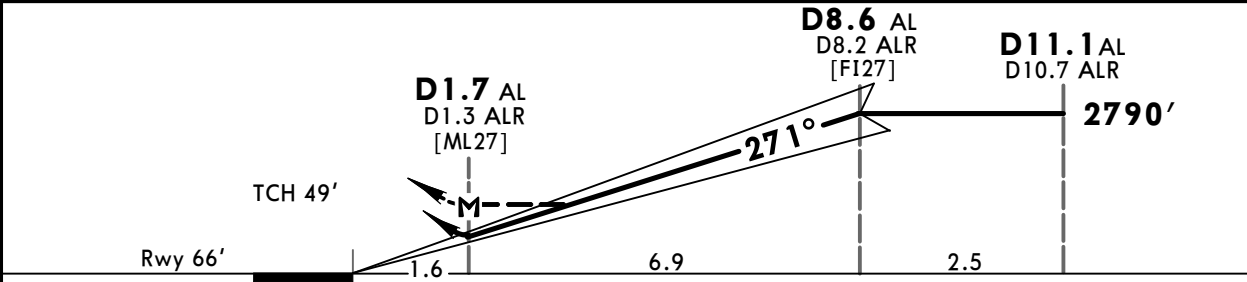
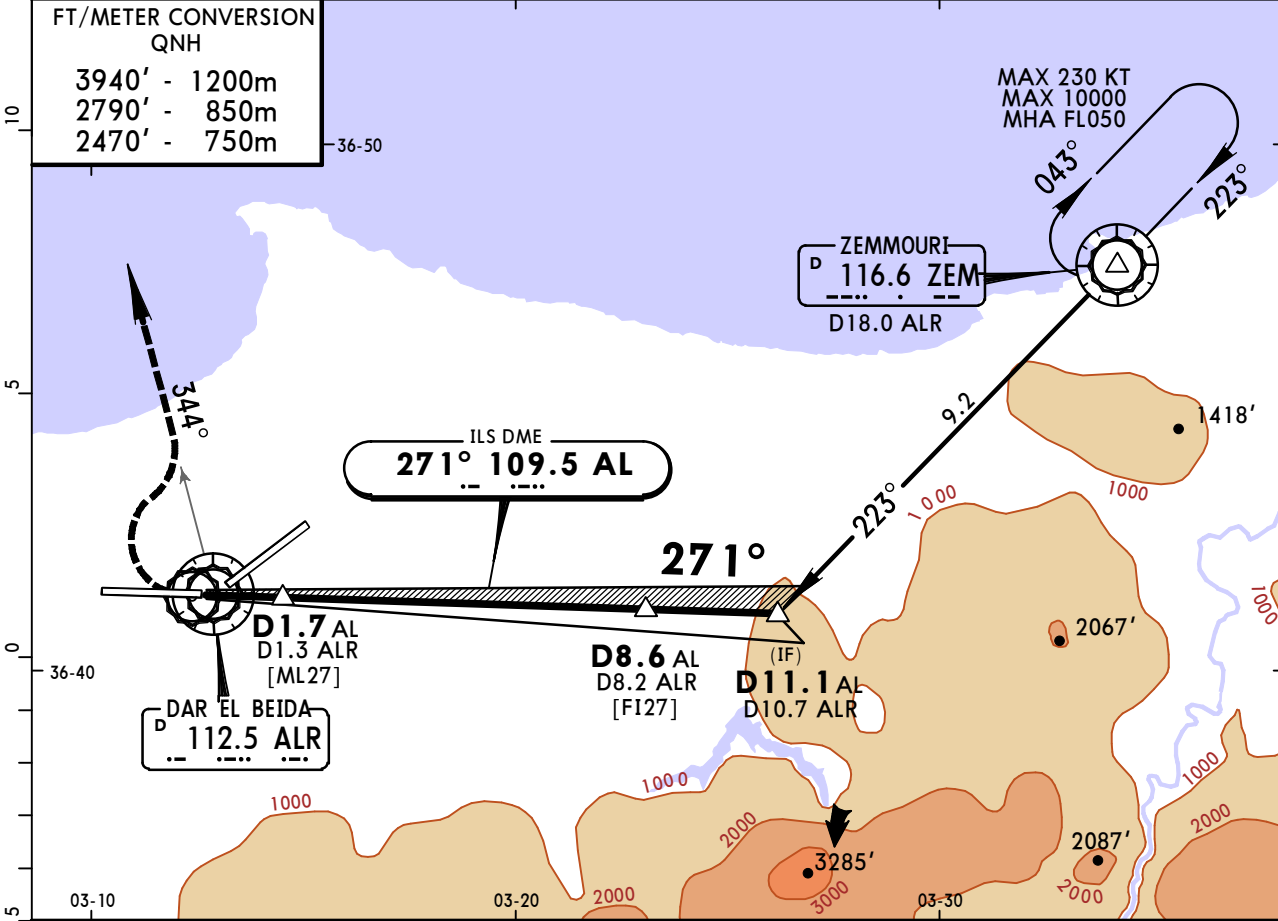


ALGIERS, ALGERIA
ILS OR LOC Rwy 27

ATIS 128.525		ALGIERS Approach (R) 121.4		ALGIERS Tower 118.7		Ground 121.8	
LOC AL 109.5	Final Apch Crs 271°	D8.6 AL 2790' (2724')	ILS DA(H) Refer to Minimums		Apt Elev 82' Rwy 66'		
MISSED APCH: As soon as possible turn RIGHT to intercept R-344 ALR, maintain 2470' and as directed. MAX 185 KT.							
Alt Set: hPa		Rwy Elev: 2 hPa		Trans level: By ATC		Trans alt: 3940'	

FT/METER CONVERSION
QNH

3940'	-	1200m
2790'	-	850m
2470'	-	750m



Gnd speed-Kts	70	90	100	120	140	160	PAPI-L	As soon as possible	2470' ALR on 112.5 RT R-344						
ILS GS or	3.00°									372	478	531	637	743	849
LOC Descent Angle	MAP at D1.7 AL/D1.3 ALR														

STRAIGHT-IN LANDING RWY 27			CIRCLE-TO-LAND			
ILS		LOC (GS out)		Not authorized South of airport		
DA(H) A: 266' (200') C: 286' (220') B: 276' (210') D: 296' (230')		MDA(H) 570' (504')		Max Kts		
A	RVR 1200m	2300m		100	650' (568')	2500m
B				135	720' (638')	2900m
C		2400m		180	1370' (1288')	5000m
D				205		

DAAG/ALG
HOUARI BOUMEDIENE

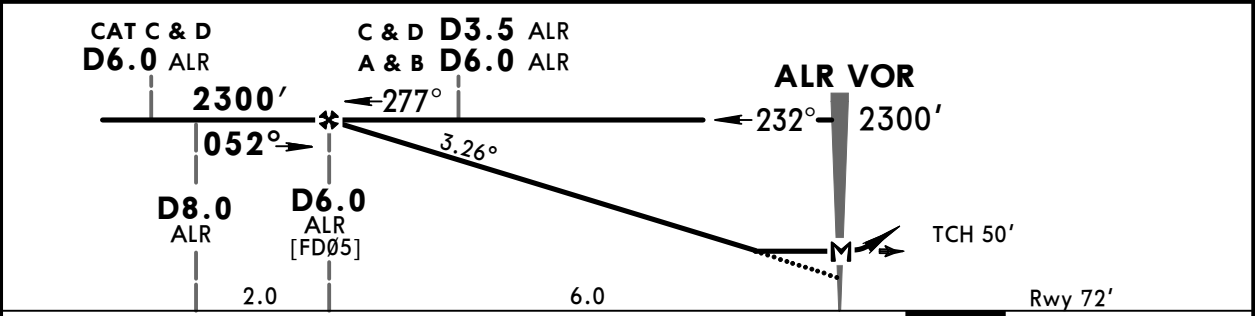
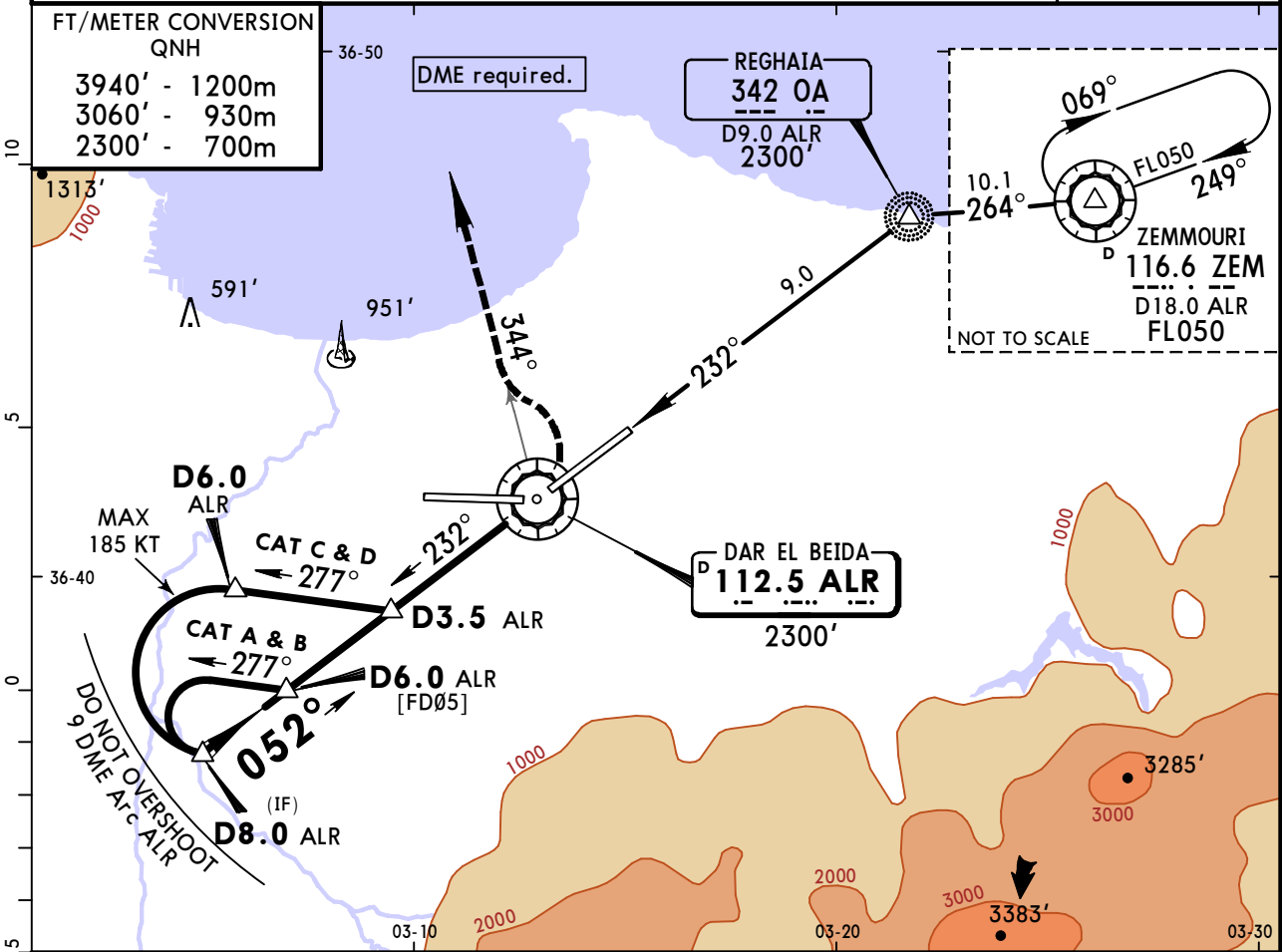
JEPPESSEN
 5 NOV 21 (13-1)

ALGIERS, ALGERIA
VOR Rwy 05

ATIS 128.525		ALGIERS Approach (R) 121.4		ALGIERS Tower 118.7		Ground 121.8	
VOR ALR 112.5	Final Apch Crs 052°	D6.0 ALR 2300' (2228')	MDA(H) 540' (468')	Apt Elev 82' Rwy 72'			
MISSED APCH: Turn LEFT to intercept R-344 ALR, maintain 3060' and as directed.							MSA ZEM VOR
Alt Set: hPa		Rwy Elev: 3 hPa		Trans level: By ATC		Trans alt: 3940'	

FT/METER CONVERSION
QNH

3940'	-	1200m
3060'	-	930m
2300'	-	700m



Gnd speed-Kts	70	90	100	120	140	160	PAPI-L		ALR R-344
Descent Angle	3.26°	404	519	577	692	808			
MAP at ALR VOR									

STRAIGHT-IN LANDING RWY 05			CIRCLE-TO-LAND		
MDA(H) 540' (468')			Not authorized South of airport		
PANS OPS	A	RVR 1500m VIS 1600m	Max Kts	MDA(H)	
	B		100	680' (598')	2700m
	C	2000m	135	780' (698')	3200m
	D	2400m	180	1440' (1358')	5000m
			205	1960' (1878')	5000m

DAAG/ALG
HOUARI BOUMEDIENE

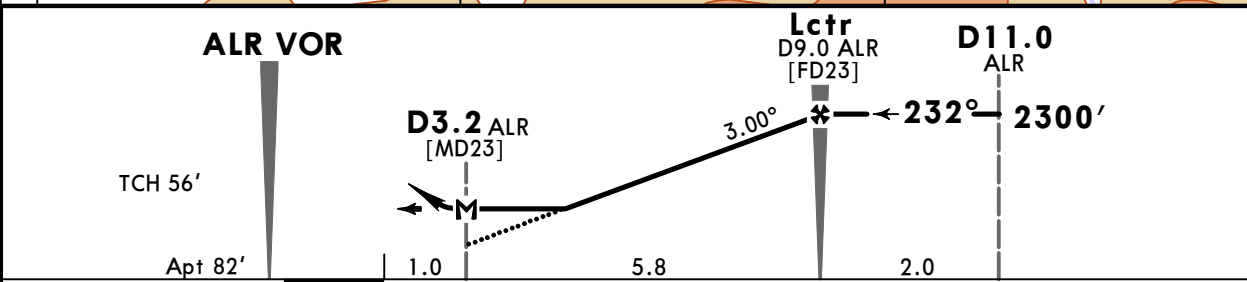
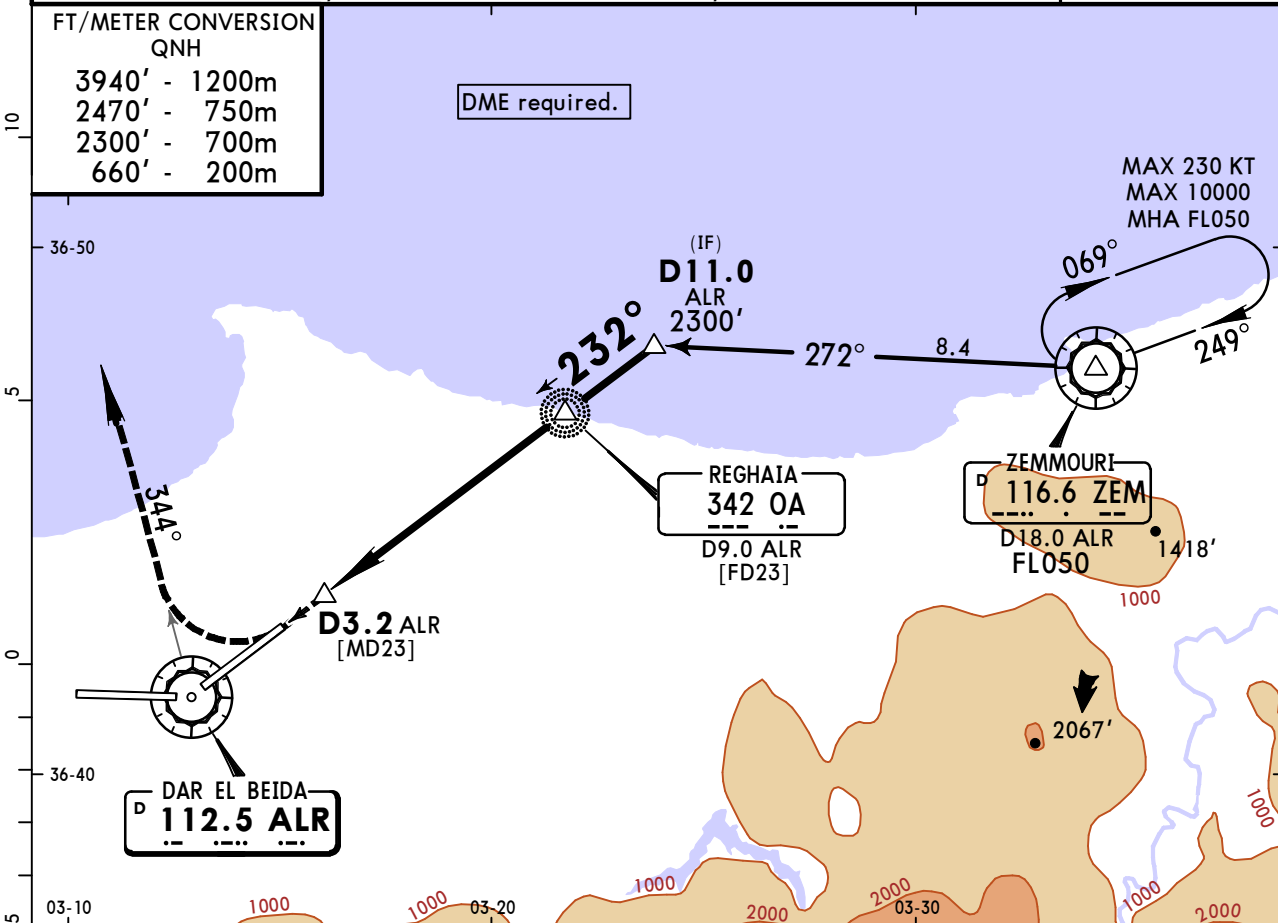


ALGIERS, ALGERIA
VOR Rwy 23

5 NOV 21 (13-2)

ATIS 128.525		ALGIERS Approach (R) 121.4		ALGIERS Tower 118.7		Ground 121.8	
VOR ALR 112.5	Final Apch Crs 232°	Lctr 2300' (2218')	MDA(H) 490' (408')	Apt Elev 82'			
MISSED APCH: Climb STRAIGHT AHEAD to 660', then turn RIGHT to climb and follow R-344 ALR, maintain 2470' and as directed.							MSA ZEM VOR
Alt Set: hPa		Rwy Elev: 3 hPa		Trans level: By ATC		Trans alt: 3940'	

FT/METER CONVERSION	
QNH	
3940'	- 1200m
2470'	- 750m
2300'	- 700m
660'	- 200m



Gnd speed-Kts	70	90	100	120	140	160	HIALS-II PAPI PAPI	660' ↑	2470' →	ALR onto RT R-344
Descent Angle	3.00°	372	478	531	637	743				
MAP at D3.2 ALR										

STRAIGHT-IN LANDING RWY 23				CIRCLE-TO-LAND			
MDA(H) 490' (408')				Not authorized South of airport			
ALS out				Max Kts	MDA(H)		
A	1100m		RVR 1500m VIS 1600m	100	680' (598')		2700m
B	1100m		RVR 1500m VIS 1600m	135	780' (698')		3200m
C	RVR 1500m VIS 1600m		2000m	180	1440' (1358')		5000m
D	RVR 1500m VIS 1600m		2000m	205	1960' (1878')		5000m

DAAG/ALG

HOUARI BOUMEDIENE

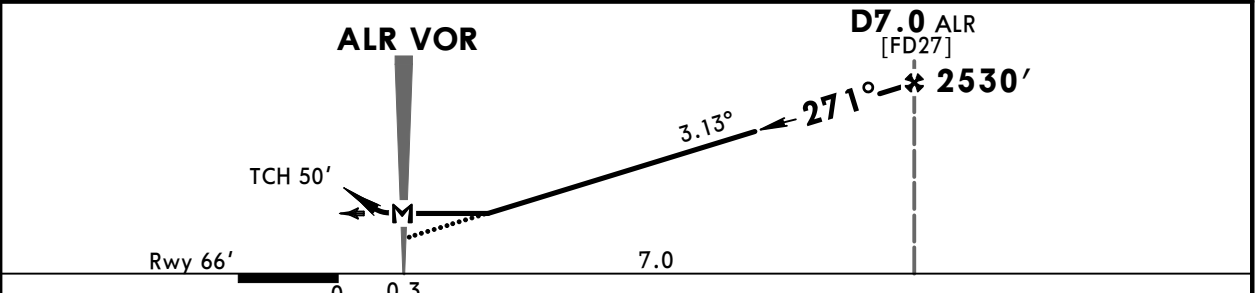
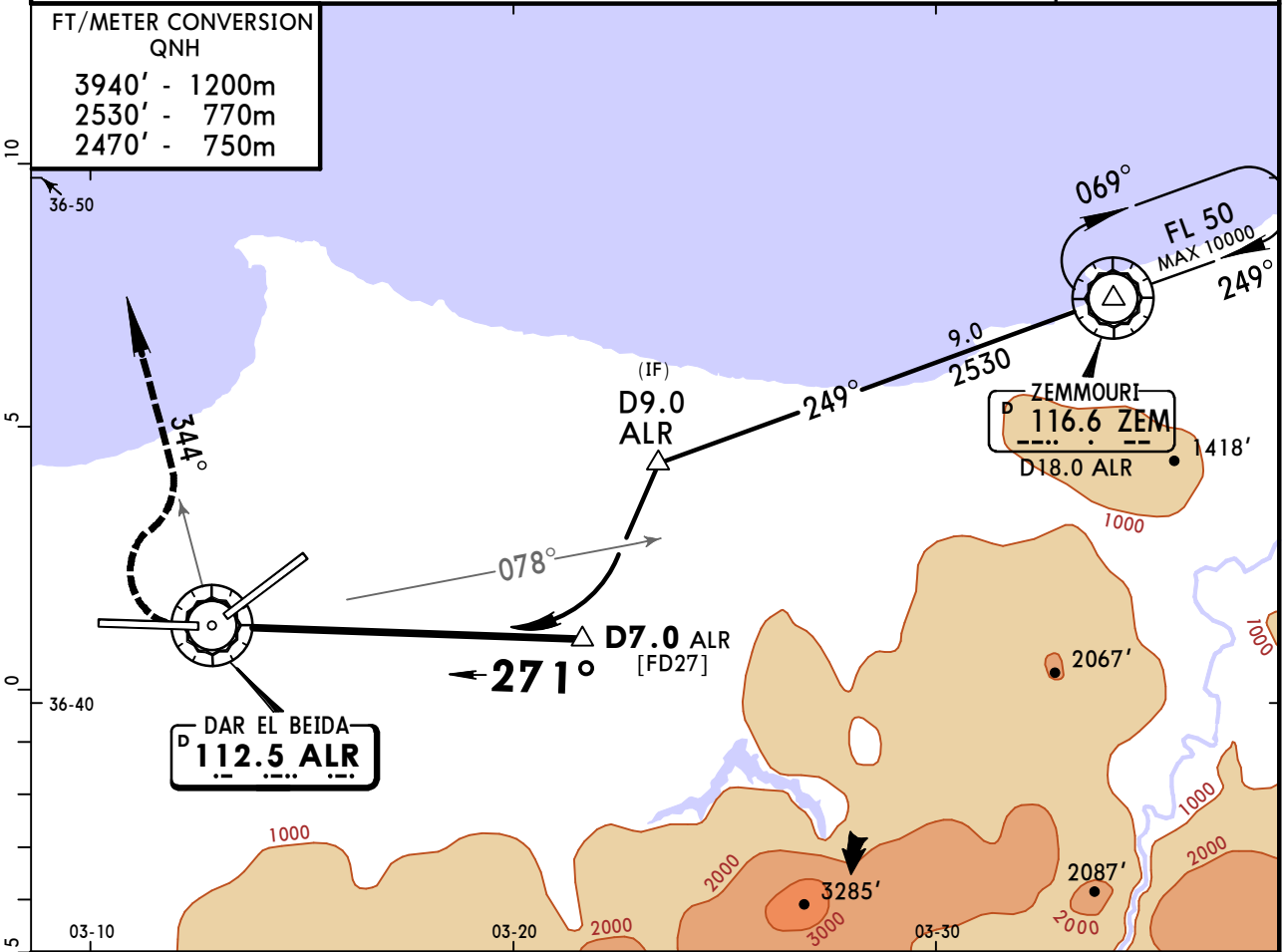
JEPPesen
30 NOV 18 **13-3** Eff 6 Dec

ALGIERS, ALGERIA

VOR DME Rwy 27

ATIS 128.52		ALGIERS Approach (R) 121.4		ALGIERS Tower 118.7		Ground 121.8	
VOR ALR 112.5	Final Apch Crs 271°	Minimum Alt D7.0 ALR 2530' (2464')	MDA(H) 520' (454')	Apt Elev 82' Rwy 66'			
MISSED APCH: Climbing turn RIGHT onto R-344 ALR, maintain 2470' and as directed.							
Alt Set: hPa		Rwy Elev: 2 hPa		Trans level: By ATC		Trans alt: 3940'	
MSA ZEM VOR							

FT/METER CONVERSION QNH	
3940'	- 1200m
2530'	- 770m
2470'	- 750m



Gnd speed-Kts	70	90	100	120	140	160	PAPI-L	2470' ALR RT onto 112.5 R-344
Descent Angle	3.13°	388	498	554	665	775		
MAP at ALR VOR								

STRAIGHT-IN LANDING RWY 27			CIRCLE-TO-LAND	
MDA(H) 520' (454')			Not authorized South of airport	
A			Max Kts 100	MDA(H) 650' (568')
B	2400m		135	720' (638')
C	2800m		180	1370' (1288')
D	3200m		205	5000m

Chart changes since cycle 23-2021

ADD = added chart, REV = revised chart, DEL = deleted chart.

ACT	PROCEDURE IDENT	INDEX	REV DATE	EFF DATE
-----	-----------------	-------	----------	----------

ALGIERS, (HOUARI BOUMEDIENE - DAAG)

TERMINAL CHART CHANGE NOTICES

Chart Change Notices for Airport DAAG

Type: Terminal

Effectivity: Temporary

Begin Date: 20190228

End Date: Until Further Notice

(10-3F/3G) SIDs LABRO 1A, 1B, 1C & 1D under clarification.

Chart Change Notices for Country DZA

Type: Gen Tmnl

Effectivity: Temporary

Begin Date: Immediately

End Date: Until Further Notice

Alt Set to read hPa instead of MB.

Type: Gen Tmnl

Effectivity: Temporary

Begin Date: Immediately

End Date: 20220106

The new ICAO GRF including the new SNOWTAM format will be implemented in Algeria on 6 January 2022 at 0000.

SUDU..PONPA..PTA..GBE..DIL..VIE..SAVT